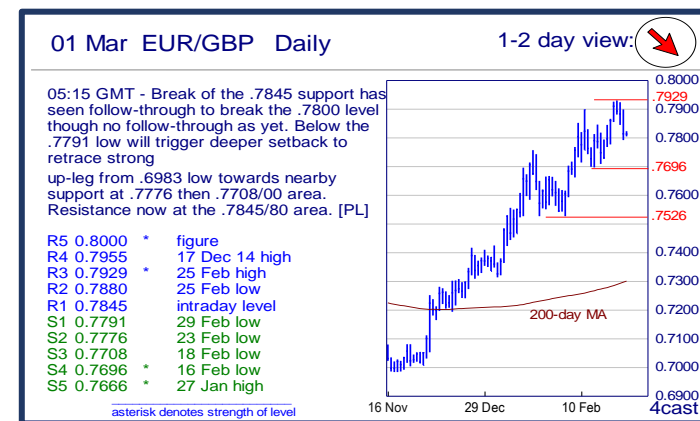
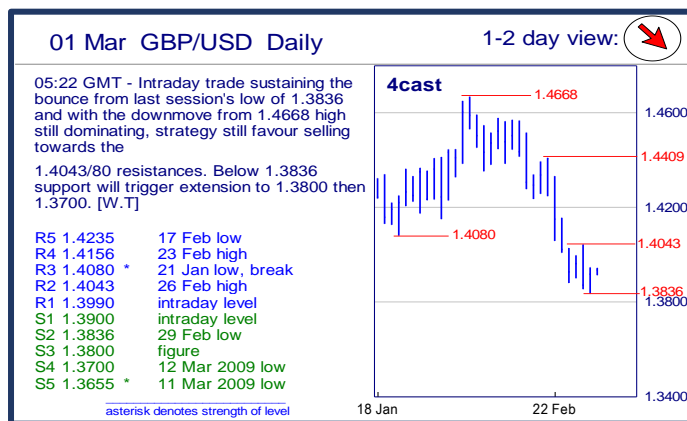
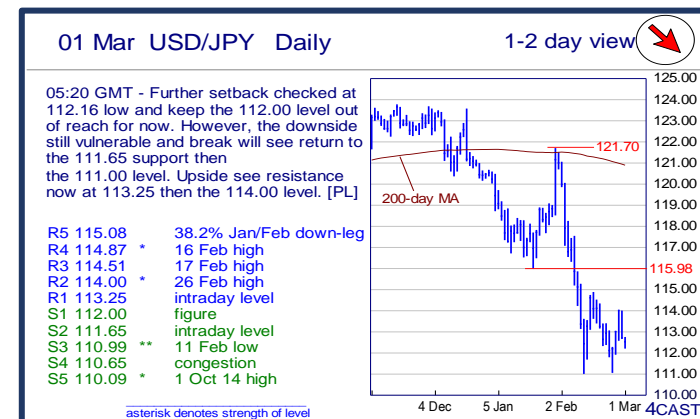
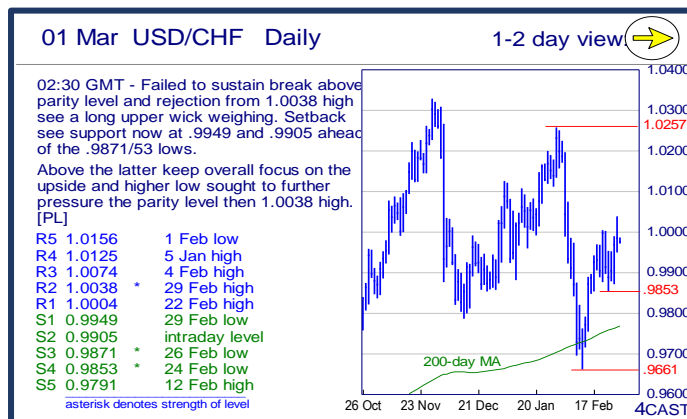
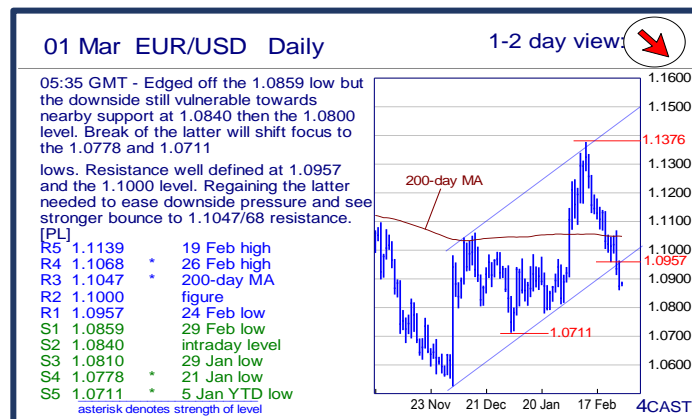


		Trends	Res 4	Res 3	Res 2	Res 1	Spot	Sup 1	Sup 2	Sup 3	Sup 4	MA20	MA50	MA200	RSI 9
Scandies	EUR/SEK	↘	9.4312	9.4088	9.3863	9.3697	9.3200	9.2844	9.2514	9.2304	9.2093	9.4111	9.3221	9.3522	37
	EUR/NOK	↘	9.6475	9.6200	9.5745	9.5225	9.4584	9.4430	9.4210	9.3780	9.3280	9.5569	9.5640	9.2501	39
	USD/SEK	↗	8.6694	8.6562	8.6180	8.5950	8.5618	8.5342	8.5180	8.4630	8.4422	8.4681	8.4923	8.4665	64
	USD/NOK	↗	8.8335	8.7925	8.7610	8.7380	8.6877	8.6570	8.5885	8.5335	8.5005	8.5966	8.7109	8.3739	59
	EUR/DKK	↘	7.4685	7.4665	7.4662	7.4647	7.4590	7.4570	7.4568	7.4545	7.4518	7.4629	7.4628	7.4616	26
	NOK/SEK	→	0.9985	0.9960	0.9920	0.9899	0.9846	0.9788	0.9768	0.9734	0.9613	0.9834	0.9734	1.0107	53
Majors	EUR/USD	↘	1.1068	1.1047	1.1000	1.0957	1.0884	1.0859	1.0840	1.0810	1.0778	1.1112	1.0975	1.1045	30
	USD/JPY	↘	114.87	114.51	114.00	113.25	112.55	112.00	111.65	110.99	110.65	113.96	116.95	120.86	39
	EUR/GBP	↘	.7955	.7929	.7880	.7845	0.7807	.7791	.7776	.7708	.7696	0.7780	0.7612	0.7297	53
	GBP/USD	↘	1.4156	1.4080	1.4043	1.3990	1.3936	1.3900	1.3836	1.3800	1.3700	1.4282	1.4417	1.5143	32
	USD/CHF	→	1.0125	1.0074	1.0038	1.0004	0.9970	0.9949	0.9905	0.9871	0.9853	0.9889	0.9977	0.9764	56
	EUR/JPY	↘	126.10	125.01	124.22	123.40	122.53	121.95	121.00	120.00	119.11	126.64	128.31	133.48	23
	EUR/CHF	↘	1.1000	1.0950	1.0930	1.0885	1.0855	1.0840	1.0810	1.0778	1.0756	1.0991	1.0952	1.0784	26
	AUD/USD	↘	.7261	.7259	.7200	.7168	0.7127	.7109	.7069	.7046	.7000	0.7143	0.7102	0.7255	47
	USD/CAD	↘	1.3980	1.3910	1.3859	1.3643	1.3539	1.3501	1.3500	1.3477	1.3400	1.3755	1.3968	1.3278	33
	NZD/USD	↘	.6752	.6700	.6674	.6645	0.6595	.6565	.6545	.6509	.6450	0.6646	0.6621	0.6640	46
	EUR/CAD	↘	1.5530	1.5390	1.5265	1.5055	1.4737	1.4675	1.4500	1.4380	1.4225	1.5287	1.5329	1.4661	26
	GBP/JPY	→	158.88	158.56	158.16	157.46	156.8600	155.79	155.02	154.73	154.15	162.7770	168.6510	183.1416	26
EM	USD/CNH	↗	6.6512	6.6188	6.5918	6.5867	6.5428	6.5425	6.5317	6.5256	6.5164	6.5410	6.5762	6.4023	50
	USD/ZAR	↗	16.970	16.650	16.440	16.310	15.8742	15.765	15.510	15.055	14.790	15.7369	15.9413	13.9680	54
	USD/BRL	↘	4.1230	4.0950	4.0730	4.0220	4.0139	3.9190	3.9100	3.8000	3.7700	3.9662	3.9951	3.6879	56
	USD/MXN	↘	19.440	19.000	18.620	18.394	18.144	18.095	18.000	17.952	17.465	18.451	18.110	16.813	42
	EUR/PLN	↘	4.50~	4.4720	4.4175	4.3865	4.3420	4.3400	4.3285	4.2680	4.2600	4.3908	4.3754	4.2529	35
	EUR/CZK	→	27.19~	27.140	27.131	27.087	27.051	26.960	26.949	26.914	25.710	27.027	27.019	27.079	57
	EUR/HUF	→	316.35	314.65	313.00	312.00	309.97	308.50~	306.70	306.48	304.40	309.89	312.30	311.98	49
	EUR/TRY	↘	3.3545	3.3420	3.3145	3.2830	3.2235	3.1980	3.1635	3.1380	3.1175	3.2698	3.2544	3.1785	40
	USD/PLN	↗	4.1000	4.0481	4.0016	4.0000	3.9912	3.9844	3.9495	3.8881	3.8590	3.9527	3.9882	3.8528	56
	USD/RUB	↘	85.95	82.25	80.63	78.56	74.86	73.50~	72.32	71.70	70.76	76.93	76.25	66.00	41
Other Markets	S&P 500 Futures	→	1983	1977	1959	1939	1924	1900	1877	1800	1795	1900	1932	2010	54
	DAX Futures	→	9923	9800	9620	9586	9464	9120	9000	8690	8350	9262	9745	10541	54
	US 10y Futures	→	132-20+	131-19	131-14	131-07+	131.03	130-06+	129-31+	129-26	129-00	130.90	128.81	126.92	58
	Bund Futures	↗	169.00	168.55	168.00	167.00	166.58	165.51	164.75	163.72	162.70	160.26	161.68	157.77	47
	WTI Oil Futures	→	35.08	35.00	34.69	34.20	33.82	32.40	30.56	29.78	28.74	30.48	33.59	47.35	56

		Trends	Res 4	Res 3	Res 2	Res 1	Spot	Sup 1	Sup 2	Sup 3	Sup 4	MA20	MA 50	MA 200	RSI 9
Scandies	EUR/SEK	↘	9.4312 12 Feb low	9.4088 22 Feb high	9.3863 26 Feb high	9.3697 29 Feb high	9.3200	9.2844 2 Feb low	9.2514 27 Jan low	9.2304 8 Jan low	9.2093 6 Jan low	9.4111	9.3221	9.3522	37
	EUR/NOK	↘	9.6475 17 Feb high	9.6200 24 Feb high	9.5745 25 Feb high	9.5225 29 Feb high	9.4584	9.4430 23 Feb low	9.4210 25 Jan low	9.3780 29 Jan low	9.3280 3 Dec high	9.5569	9.5640	9.2501	39
	USD/SEK	↗	8.6694 25 Nov low	8.6562 21 Jan high	8.6180 29 Jan high	8.5950 29 Feb high	8.5618	8.5342 17 Feb high	8.5180 29 Feb low	8.4630 26 Feb low	8.4422 22 Feb low	8.4681	8.4923	8.4665	64
	USD/NOK	↗	8.8335 17 Dec high	8.7925 25 Jan high	8.7610 24 Feb high	8.7380 29 Feb high	8.6877	8.6570 15 Feb high	8.5885 24 Feb low	8.5335 18 Feb low	8.5005 11 Feb low	8.5966	8.7109	8.3739	59
	EUR/DKK	↘	7.4685 May-15 high	7.4665 24-Dec high	7.4662 16-Feb YTD high	7.4647 24-Feb high	7.4590	7.4570 7-Jan low	7.4568 Dec-15 low	7.4545 Oct-15 low	7.4518 Jul-15 low	7.4629	7.4628	7.4616	26
	NOK/SEK	→	0.9985 18 Feb high	0.9960 intraday level	0.9920 intraday level	0.9899 23 Feb high	0.9846	0.9788 29 Feb low	0.9768 25 Feb low	0.9734 11 Feb low	0.9613 21 Jan low	0.9834	0.9734	1.0107	53
Majors	EUR/USD	↘	1.1068 26 Feb high	1.1047 200-day MA	1.1000 figure	1.0957 24 Feb low	1.0884	1.0859 29 Feb low	1.0840 intraday level	1.0810 29 Jan low	1.0778 21 Jan low	1.1112	1.0975	1.1045	30
	USD/JPY	↘	114.87 16 Feb high	114.51 17 Feb high	114.00 26 Feb high	113.25 intraday level	112.55	112.00 figure	111.65 intraday level	110.99 11 Feb low	110.65 congestion	113.96	116.95	120.86	39
	EUR/GBP	↘	.7955 17 Dec 14 high	.7929 25 Feb high	.7880 25 Feb low	.7845 intraday level	0.7807	.7791 29 Feb low	.7776 23 Feb low	.7708 18 Feb low	.7696 16 Feb low	0.7780	0.7612	0.7297	53
	GBP/USD	↘	1.4156 23 Feb high	1.4080 21 Jan low, break	1.4043 26 Feb high	1.3990 intraday level	1.3936	1.3900 intraday level	1.3836 29 Feb low	1.3800 figure	1.3700 12 Mar 2009 low	1.4282	1.4417	1.5143	32
	USD/CHF	→	1.0125 5 Jan high	1.0074 4 Feb high	1.0038 29 Feb high	1.0004 22 Feb high	0.9970	0.9949 29 Feb low	0.9905 intraday level	0.9871 26 Feb low	0.9853 24 Feb low	0.9889	0.9977	0.9764	56
	EUR/JPY	↓	126.10 2015 low	125.01 26 Feb high	124.22 26 Feb low	123.40 intraday level	122.53	121.95 50%2012/2014 up	121.00 projection	120.00 figure	119.11 Apr 2013 low	126.64	128.31	133.48	23
	EUR/CHF	↘	1.1000 figure	1.0950 11 Feb low	1.0930 29 Feb high	1.0885 intraday level	1.0855	1.0840 intraday level	1.0810 29 Feb low	1.0778 30 Dec low	1.0756 18 Dec low	1.0991	1.0952	1.0784	26
	AUD/USD	↘	.7261 200-day MA	.7259 23 Feb high	.7200 figure	.7168 29 Feb high	0.7127	.7109 29 Feb low	.7069 19 Feb low	.7046 22 Jan high	.7000 figure	0.7143	0.7102	0.7255	47
	USD/CAD	↘	1.3980 50-day MA	1.3910 16 Feb high	1.3859 24 Feb high	1.3643 100-day MA	1.3539	1.3501 26 Feb low	1.3500 figure	1.3477 projection	1.3400 figure	1.3755	1.3968	1.3278	33
	NZD/USD	↘	.6752 5 Feb high	.6700 figure	.6674 24 Feb high	.6645 200-day MA	0.6595	.6565 19 Feb low	.6545 16 Feb low	.6509 3 Feb low	.6450 1 Feb low	0.6646	0.6621	0.6640	46
	EUR/CAD	↘	1.5530 17-Feb high	1.5390 19-Feb high	1.5265 24-Feb high	1.5055 24-Feb low	1.4737	1.4675 7-Dec high	1.4500 7-Dec low	1.4380 12-Nov high	1.4225 1-Dec high	1.5287	1.5329	1.4661	26
	GBP/JPY	→	158.88 intraday level	158.56 26 Feb high	158.16 29 Feb high	157.46 intraday level	156.86	155.79 25 Feb low	155.02 intraday level	154.73 24 Feb /9 Oct 20	154.15 6 Sep 2013 low	162.78	168.65	183.14	26
EM	USD/CNH	↗	6.6512 3 Feb high	6.6188 4 Feb high	6.5918 29 Jan low	6.5867 8 Feb high	6.5428	6.5425 29 Feb low	6.5317 26 Feb low	6.5256 23 Feb low	6.5164 18 Feb low	6.5410	6.5762	6.4023	50
	USD/ZAR	↗	16.970 18-Jan high	16.650 26-Jan high	16.440 3-Feb high	16.310 26-Feb high	15.874	15.765 24-Feb high	15.510 26-Feb low	15.055 23-Feb low	14.790 16-Dec low	15.737	15.941	13.968	54
	USD/BRL	↘	4.1230 28 Jan high	4.0950 29 Jan high	4.0730 07 Jan high	4.0220 22 Feb high	4.0139	3.9190 25 Feb low	3.9100 100-day MA	3.8000 break level	3.7700 projection	3.9662	3.9951	3.6879	56
	USD/MXN	↘	19.440 11 Feb high	19.000 figure	18.620 10 Feb low	18.394 18 Feb high	18.144	18.095 50-day MA	18.000 figure	17.952 17 Feb low	17.465 break level	18.451	18.110	16.813	42
	EUR/PLN	↘	4.50~ fr mid-Jan highs	4.4720 9-Feb high	4.4175 16-Feb high	4.3865 24-Feb/ last week	4.3420	4.3400 14-Jan low	4.3285 13-Jan low	4.2680 4-Jan low	4.2600 1-Jan high	4.3908	4.3754	4.2529	35
	EUR/CZK	→	27.19~ 1-Oct high	27.140 Oct high	27.131 11-Feb YTD high	27.087 5-Feb high	27.051	26.960 Feb low	26.949 Dec-15/ last year l	26.914 8-Nov-13 low	25.710 7-Nov-13 low	27.027	27.019	27.079	57
	EUR/HUF	→	316.35 20-Jan high	314.65 28-Jan high	313.00 9 & 11-Feb highs	312.00 17, 26-Feb highs	309.97	308.50~ lows fr Aug-15	306.70 start Aug-15 lows	306.48 22-Feb YTD low	304.40 19-May-15 low	309.89	312.30	311.98	49
	EUR/TRY	↘	3.3545 20-Jan high	3.3420 11-Feb high	3.3145 19-Feb high	3.2830 22-Feb high	3.2235	3.1980 1-Feb low	3.1635 4-Jan low	3.1380 18-Dec low	3.1175 27-Nov high	3.2698	3.2544	3.1785	40
	USD/PLN	↗	4.1000 break level	4.0481 03 Feb high	4.0016 08 Feb high	4.0000 figure	3.9912	3.9844 50-day MA	3.9495 100-day MA	3.8881 11 Feb low	3.8590 28 Dec low	3.9527	3.9882	3.8528	56
	USD/RUB	↘	85.95 21 Jan YTD high	82.25 26 Jan high	80.63 11 Feb high	78.56 22 Feb high	74.86	73.50~ uptrend from May	72.32 05 Jan low	71.70 2015 tops	70.76 100-day MA	76.93	76.25	66.00	41
Other Markets	S&P 500 Futures	→	1983 100-day MA	1977 break level	1959 26 Feb high	1939 13 Jan high	1924	1900 figure	1877 24 Feb low	1800 figure	1795 Jan/Feb lows	1900	1932	2010	54
	DAX Futures	→	9923 27 Jan high	9800 break level	9620 04 Feb high	9586 22 Feb high	9464	9120 24 Feb low	9000 gap break	8690 11 Feb low	8350 early-Oct '14 low	9262	9745	10541	54
	US 10y Futures	→	132-20+ 11 Feb high	131-19 12 Feb high	131-14 24 Feb high	131-07+ 25 Feb high	131.03	130-06+ 26 Feb low	129-31+ 23 Feb low	129-26 17 Feb low	129-00 figure	130.90	128.81	126.92	58
	Bund Futures	↗	169.00 figure	168.55 projection	168.00 figure	167.00 figure	166.58	165.51 24-Feb low	164.75 23-Feb low	163.72 08-Feb low	162.70 29-Jan low, gap	160.26	161.68	157.77	47
	WTI Oil Futures	→	35.08 04 Feb high	35.00 figure	34.69 figure	34.20 50-day MA	33.82	32.40 24 Feb high	30.56 24 Feb low	29.78 12 Feb low	28.74 11 Feb low	30.48	33.59	47.35	56



Strong uptrend



Weak uptrend or higher in range



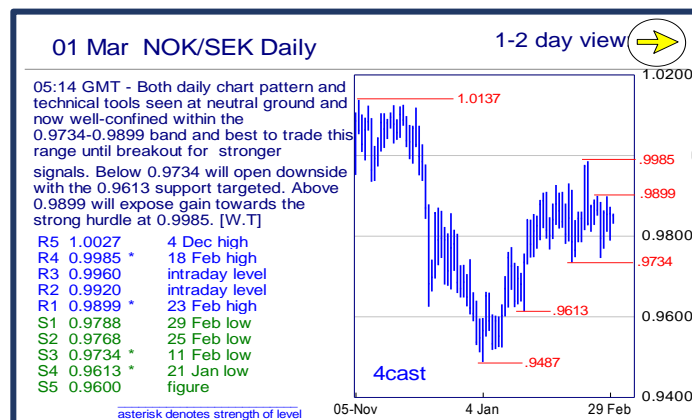
Sideways or in range





Weak downtrend or lower in range

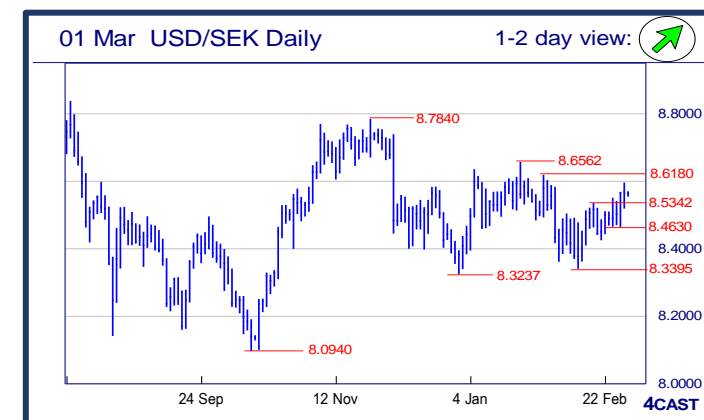
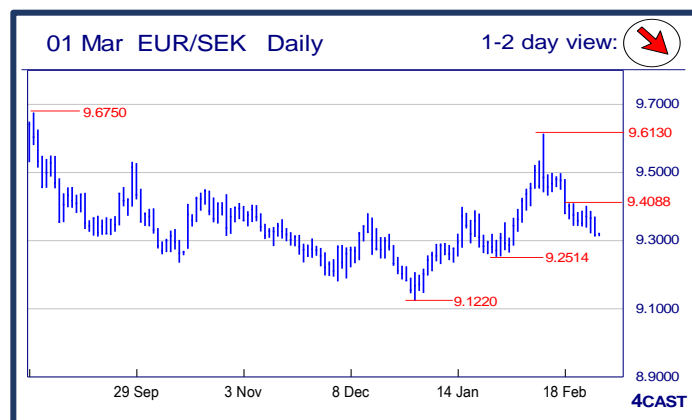


Strong downtrend



NOK, SEK opening updates  

	1 day view	Resistance	Support	4cast
EUR/NOK		9.6475 9.6200 9.5745 9.5225	9.4430 9.4210 9.3780 9.3280	Pressuring the downside with the 9.4430 low now at risk and where break will shift focus to 9.4000 level then the 9.3780, YTD low. Below the latter will trigger a double top pattern and see deeper setback. Resistance now at 9.5225 and 9.5745. [P.L]
EUR/SEK		9.4312 9.4088 9.3863 9.3697	9.2844 9.2514 9.2304 9.2093	Sell-off towards closing last session keeping the downmove from 9.6130 high in play and seeking extension towards lower target at 9.2514. Only lift above 9.3697 hurdle to trigger corrective bounce. [W.T]
USD/NOK		8.8335 8.7925 8.7610 8.7380	8.6570 8.5885 8.5335 8.5005	Pressure stays on the upside and see scope to retest the 8.7610 high. Clearance will see further strength to the 8.8000 level. Setback below the 8.6570 support will ease upside pressure and see scope back to 8.6000 and 8.5885 support. [P.L]
USD/SEK		8.6694 8.6562 8.6180 8.5950	8.5342 8.5180 8.4630 8.4422	Sustaining above the 8.5342 support is keeping the upmove from 8.3395 low in play and breach of 8.5950 hurdle will expose gain to 8.6180 then 8.6562. Only dip below 8.5180 support to ease upside pressure. [W.T]



Strong uptrend



Weak uptrend or higher in range



Sideways or in range



Weak downtrend or lower in range



Strong downtrend