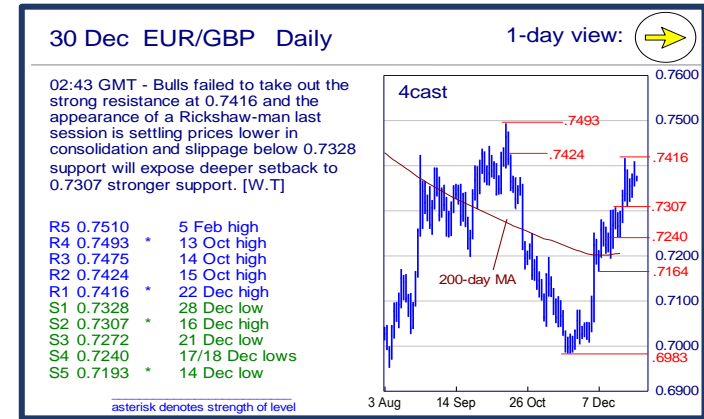
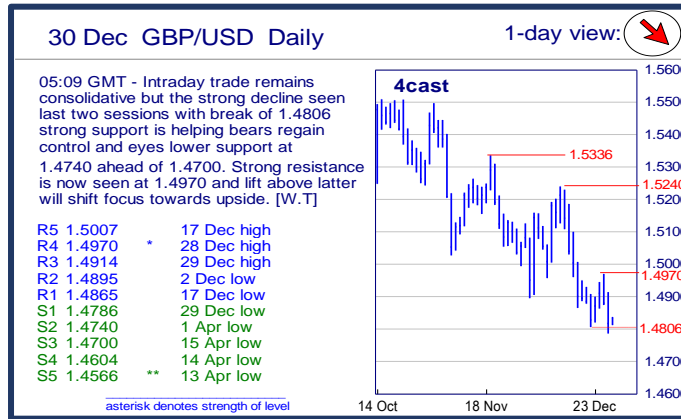
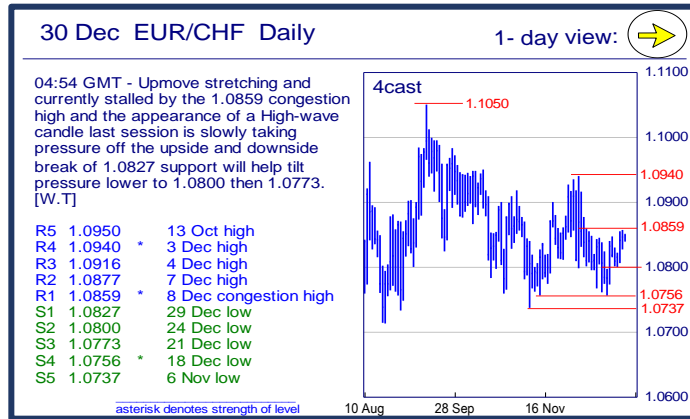
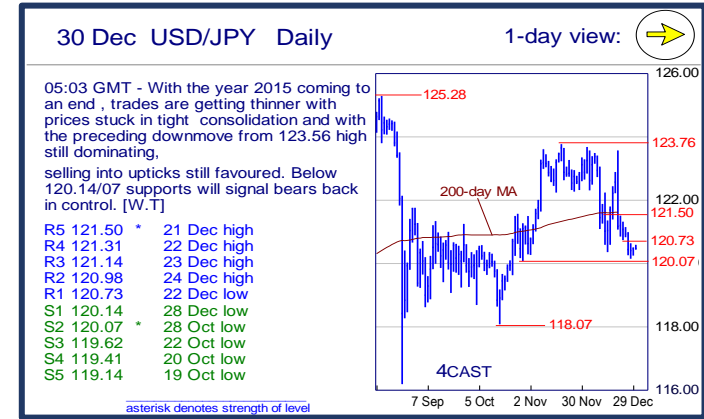
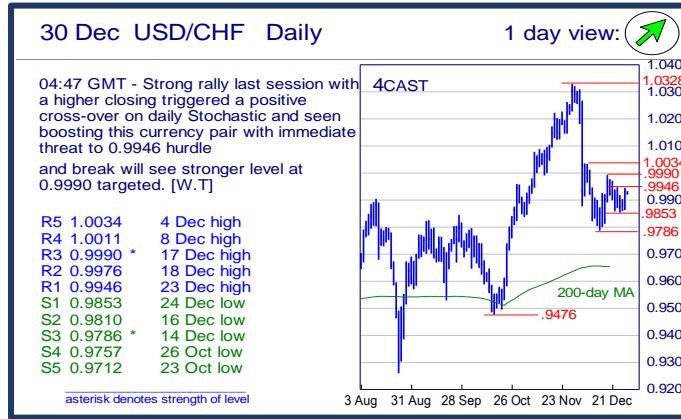
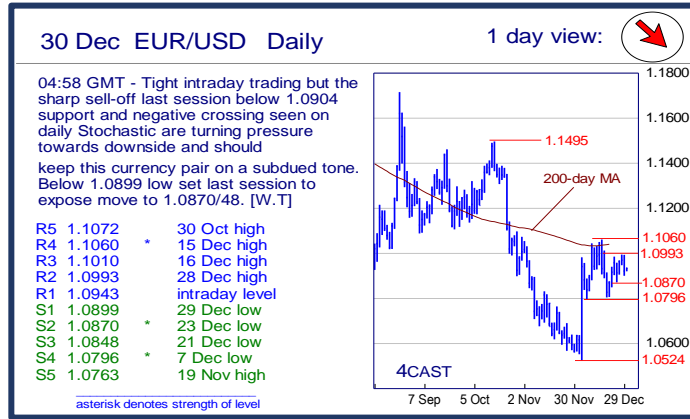


	Trends	Res 4	Res 3	Res 2	Res 1	Spot	Sup 1	Sup 2	Sup 3	Sup 4	MA20	MA50	MA200	RSI 9	
Scandies	EUR/SEK	↓	9.2513	9.2254	9.1903	9.1794	9.1529	9.1310	9.1200	9.1000	9.0552	9.2514	9.2945	9.3490	26
	EUR/NOK	→	9.6280	9.6080	9.5733	9.5616	9.5314	9.4774	9.4602	9.4137	9.3773	9.4972	9.3602	9.0129	57
	USD/SEK	→	8.5073	8.4745	8.4568	8.4220	8.3750	8.3237	8.2870	8.2643	8.2265	8.4657	8.5714	8.4654	32
	USD/NOK	↗	8.8335	8.8132	8.7853	8.7545	8.7202	8.6610	8.6100	8.5800	8.4965	8.6882	8.6286	8.1601	54
	EUR/DKK	↗	7.47~	7.4685	7.4660	7.4645	7.4626	7.4580	7.4565	7.4545	7.4518	7.4620	7.4610	7.4621	53
	NOK/SEK	↘	0.9856	0.9815	0.9742	0.9667	0.9595	0.9580	0.9532	0.9500	0.9460	0.9730	0.9920	1.0375	31
Majors	EUR/USD	↘	1.1060	1.1010	1.0993	1.0943	1.0929	1.0899	1.0870	1.0848	1.0796	1.0927	1.0844	1.1044	53
	USD/JPY	→	121.31	121.14	120.98	120.73	120.43	120.14	120.07	119.62	119.41	121.49	121.94	121.60	34
	EUR/GBP	→	.7493	.7475	.7424	.7416	0.7368	.7328	.7307	.7272	.7240	0.7287	0.7168	0.7206	67
	GBP/USD	↘	1.4970	1.4914	1.4895	1.4865	1.4833	1.4786	1.4740	1.4700	1.4604	1.4988	1.5123	1.5320	36
	USD/CHF	↗	1.0011	0.9990	0.9976	0.9946	0.9922	0.9853	0.9810	0.9786	0.9757	0.9901	0.9988	0.9653	50
	EUR/JPY	↘	132.80	132.66	132.47	131.84	131.64	131.04	129.92	129.67	129.36	132.74	132.23	134.28	40
	EUR/CHF	→	1.0940	1.0916	1.0877	1.0859	1.0843	1.0827	1.0800	1.0773	1.0756	1.0823	1.0831	1.0659	56
	AUD/USD	↗	.7409	.7385	.7346	.7335	0.7289	.7246	.7227	.7209	.7182	0.7240	0.7194	0.7414	59
	USD/CAD	→	1.4003	1.4000	1.3999	1.3950	1.3841	1.3800	1.3780	1.3639	1.3455	1.3741	1.3447	1.2902	61
	NZD/USD	↗	.6993	.6940	.6924	.6897	0.6854	.6847	.6825	.6784	.6760	0.6760	0.6668	0.6842	66
	EUR/CAD	→	1.5430	1.5300-20	1.5290	1.5200	1.5127	1.5035	1.4940	1.4895	1.4800	1.5015	1.4582	1.4246	59
GBP/JPY	↘	180.62	180.04	179.56	179.03	178.6400	178.04	177.49	177.20	176.57	182.0950	184.4264	186.3193	20	
EM	USD/CNH	↑	6.6350	6.6175	6.6025	6.5946	6.5934	6.5582	6.5346	6.5252	6.5142	6.5250	6.4483	6.3199	74
	USD/ZAR	→	16.000	15.800	15.48~	15.355	15.3250	15.055	14.790	14.600	14.495	15.0648	14.4549	13.0757	64
	USD/BRL	→	4.1530	4.0450	4.0400	3.9320	3.8648	3.8350	3.8110	3.8000	3.7000	3.8707	3.8326	3.4787	45
	USD/MXN	→	17.465	17.400	17.347	17.316	17.250	17.148	16.918	16.793	16.319	17.110	16.806	16.154	66
	EUR/PLN	→	4.3700	4.34~	4.3030	4.2565	4.2319	4.2300	4.23~	4.2070	4.2045	4.2909	4.2696	4.1763	30
	EUR/CZK	→	27.290	27.12~	27.120	27.064	26.997	26.97~	26.960	26.914	25.710	27.017	27.030	27.165	41
	EUR/HUF	→	320.25	318.00	317.00	316.02	312.99	312.80	311.00	309.35	308.62	314.56	312.77	309.75	44
	EUR/TRY	→	3.3465	3.3105	3.2250	3.2060	3.1822	3.1175	3.0775	3.0320	3.0075	3.1932	3.1443	3.0988	50
	USD/PLN	↘	4.02~	3.9950~	3.9360	3.9000	3.8731	3.86~	3.8414	3.8112	3.8100	3.9278	3.9384	3.7837	35
USD/RUB	→	75.00	73.25	73.00	72.83	72.25	70.99	69.58	68.55	67.05~	70.25	66.96	60.56	71	
Other Markets	S&P 500 Futures	↗	2110	2102	2097	2075	2072	2048	2035	2020	1983	2044	2056	2043	59
	DAX Futures	→	11433	11324	10995	10900	10846	10401	10119	10000	9885	10711	10786	11020	57
	US 10y Futures	↘	128-00	127-10	126-19	126-16	125.73	125-21	125-12+	125-11	125-09	126.22	126.51	126.44	41
	Bund Futures	→	160.66	160.00	159.36	159.28	159.01	157.81	156.78	156.42	155.67	157.92	157.29	156.60	60
	WTI Oil Futures	→	41.84	40.69	40.00	39.13	37.16	36.54	35.15	35.00	33.55	38.13	42.49	51.78	43

	Trends	Res 4	Res 3	Res 2	Res 1	Spot	Sup 1	Sup 2	Sup 3	Sup 4	MA20	MA 50	MA 200	RSI 9	
Scandies	EUR/SEK	↓	9.2513 23 Dec high	9.2254 24 Dec high	9.1903 29 Dec high	9.1794 3 Dec low	9.1529	9.1310 16 Mar low	9.1200 13 Mar low	9.1000 figure	9.0552 12 Mar low	9.2514	9.2945	9.3490	26
	EUR/NOK	→	9.6280 Sep YTD high	9.6080 8 Dec high	9.5733 23 Dec high	9.5616 28 Dec high	9.5314	9.4774 24 Dec low	9.4602 18 Dec low	9.4137 17 Dec low	9.3773 8 Dec low	9.4972	9.3602	9.0129	57
	USD/SEK	→	8.5073 22 Dec high	8.4745 23 Dec high	8.4568 24 Dec high	8.4220 28 Dec high	8.3750	8.3237 29 Dec low	8.2870 21 Oct low	8.2643 20 Oct low	8.2265 19 Oct low	8.4657	8.5714	8.4654	32
	USD/NOK	↗	8.8335 17 Dec high	8.8132 21 Dec high	8.7853 22 Dec high	8.7545 23 Dec high	8.7202	8.6610 29 Dec low	8.6100 10 Dec low	8.5800 19 Nov low	8.4965 7 Dec low	8.6882	8.6286	8.1601	54
	EUR/DKK	↗	7.47~ early Apr lows	7.4685 May high	7.4660 Aug high	7.4645 fr 15-Dec highs	7.4626	7.4580 18-Dec low	7.4565 Nov low	7.4545 Oct low	7.4518 Jul low	7.4620	7.4610	7.4621	53
	NOK/SEK	↘	0.9856 17 Dec high	0.9815 18 Dec high	0.9742 28 Dec high	0.9667 17 Dec low	0.9595	0.9580 projection	0.9532 Lower supt line fr	0.9500 figure	0.9460 Objective of trian	0.9730	0.9920	1.0375	31
Majors	EUR/USD	↘	1.1060 15 Dec high	1.1010 16 Dec high	1.0993 28 Dec high	1.0943 intraday level	1.0929	1.0899 29 Dec low	1.0870 23 Dec low	1.0848 21 Dec low	1.0796 7 Dec low	1.0927	1.0844	1.1044	53
	USD/JPY	→	121.31 22 Dec high	121.14 23 Dec high	120.98 24 Dec high	120.73 22 Dec low	120.43	120.14 28 Dec low	120.07 28 Oct low	119.62 22 Oct low	119.41 20 Oct low	121.49	121.94	121.60	34
	EUR/GBP	→	.7493 13 Oct high	.7475 14 Oct high	.7424 15 Oct high	.7416 22 Dec high	0.7368	.7328 28 Dec low	.7307 16 Dec high	.7272 21 Dec low	.7240 17/18 Dec lows	0.7287	0.7168	0.7206	67
	GBP/USD	↘	1.4970 28 Dec high	1.4914 29 Dec high	1.4895 2 Dec low	1.4865 17 Dec low	1.4833	1.4786 29 Dec low	1.4740 1 Apr low	1.4700 15 Apr low	1.4604 14 Apr low	1.4988	1.5123	1.5320	36
	USD/CHF	↗	1.0011 8 Dec high	0.9990 17 Dec high	0.9976 18 Dec high	0.9946 23 Dec high	0.9922	0.9853 24 Dec low	0.9810 16 Dec low	0.9786 14 Dec low	0.9757 26 Oct low	0.9901	0.9988	0.9653	50
	EUR/JPY	↘	132.80 22 Dec high	132.66 23 Dec high	132.47 28 Dec high	131.84 intraday level	131.64	131.04 18 Dec low	129.92 3 Dec low	129.67 27 Nov low	129.36 28 Apr low	132.74	132.23	134.28	40
	EUR/CHF	→	1.0940 3 Dec high	1.0916 4 Dec high	1.0877 7 Dec high	1.0859 8 Dec congestion	1.0843	1.0827 29 Dec low	1.0800 24 Dec low	1.0773 21 Dec low	1.0756 18 Dec low	1.0823	1.0831	1.0659	56
	AUD/USD	↗	.7409 13 Aug high	.7385 4 Dec high	.7346 7 Dec high	.7335 10 Dec high	0.7289	.7246 29 Dec low	.7227 24 Dec low	.7209 23 Dec low	.7182 22 Dec low	0.7240	0.7194	0.7414	59
	USD/CAD	→	1.4003 May '04 high	1.4000 figure	1.3999 18 Dec high	1.3950 break level	1.3841	1.3800 figure	1.3780 14 Dec high	1.3639 10 Dec high	1.3455 29 Sep high	1.3741	1.3447	1.2902	61
	NZD/USD	↗	.6993 18 Jun high	.6940 19 Jun high	.6924 25 Jun high	.6897 15 Oct high	0.6854	.6847 29 Dec low	.6825 28 Dec low	.6784 24 Dec low	.6760 22 Dec low	0.6760	0.6668	0.6842	66
	EUR/CAD	→	1.5430 25-6-Aug highs	.5300-20 Tues exch high	1.5290 May 14 high	1.5200 14-Dec high	1.5127	1.5035 Wed low	1.4940 15-Dec low	1.4895 11-Dec high	1.4800 S/R level	1.5015	1.4582	1.4246	59
GBP/JPY	↓	180.62 22 Dec high	180.04 28 Dec high	179.56 29 Dec high	179.03 22 Dec low	178.64	178.04 16 Apr high	177.49 21 Apr low	177.20 20 Apr low	176.57 16 Apr low	182.10	184.43	186.32	20	
EM	USD/CNH	↑	6.6350 2 Dec 2010 low	6.6175 30 Dec 2010 high	6.6025 6 Jan 2011 high	6.5946 12 Aug high	6.5934	6.5582 29 Dec low	6.5346 28 Dec low	6.5252 22 Dec low	6.5142 16 Dec low	6.5250	6.4483	6.3199	74
	USD/ZAR	→	16.000 figure	15.800 figure	15.48~ 10-Dec highs	15.355 11-Dec low	15.325	15.055 28-Dec low	14.790 16-Dec low	14.600 spike accel	14.495 1-Dec high	15.065	14.455	13.076	64
	USD/BRL	→	4.1530 29 Sep high	4.0450 02 Oct high	4.0400 21 Dec high	3.9320 break level	3.8648	3.8350 50-day MA	3.8110 100-day MA	3.8000 break level	3.7000 range bottom	3.8707	3.8326	3.4787	45
	USD/MXN	→	17.465 14 Dec high	17.400 break level	17.347 15 Dec high	17.316 24 Dec high	17.250	17.148 23 Dec low	16.918 09 Nov high	16.793 50-day MA	16.319 15 Oct low	17.110	16.806	16.154	66
	EUR/PLN	→	4.3700 14, 15-Dec highs	4.34~ 15-Dec sell accel	4.3030 18-Dec high	4.2565 22-Dec high	4.2319	4.2300 21, 22-Dec lows	4.23~ uptrend from Aug	4.2070 9-Oct low	4.2045 11-Nov low	4.2909	4.2696	4.1763	30
	EUR/CZK	→	27.290 25-Sep high	27.12~ downtrend fr April	27.120 Nov high	27.064 16-Dec high	26.997	26.97~ fr Sep lows	26.960 11-Dec YTD low	26.914 8-Nov-13 low	25.710 7-Nov-13 low	27.017	27.030	27.165	41
	EUR/HUF	→	320.25 Jan highs blw spik	318.00 Jul high. 11-Dec hi	317.00 18-Dec high	316.02 Thurs am high	312.99	312.80 18-Dec low	311.00 7-Dec low	309.35 3-Dec low	308.62 20-Nov ow	314.56	312.77	309.75	44
	EUR/TRY	→	3.3465 15-Oct high	3.3105 21-Oct high	3.2250 15-Dec low	3.2060 17-Dec high	3.1822	3.1175 27-Nov high	3.0775 2-Dec high	3.0320 23-Nov high	3.0075 23-Nov low	3.1932	3.1443	3.0988	50
	USD/PLN	↘	4.02~ start Dec lows	3.9950~ 7-9-Dec highs	3.9360 50-day MA	3.9000 break level	3.8731	3.86~ Jul, Aug highs	3.8414 100-day MA	3.8112 04-Sep high	3.8100 break level	3.9278	3.9384	3.7837	35
USD/RUB	→	75.00 break level	73.25 projection	73.00 figure	72.83 29 Dec high	72.25	70.99 25 Dec high	69.58 28 Dec low	68.55 24 Dec low	67.05~ earlier Nov highs	70.25	66.96	60.56	71	
Other Markets	S&P 500 Futures	↗	2110 Jul high	2102 03 Nov high	2097 02 Dec high	2075 29 Dec high	2072	2048 29 Dec low	2035 28 Dec low	2020 break level	1983 14 Dec low	2044	2056	2043	59
	DAX Futures	→	11433 30 Nov high	11324 3-Dec high	10995 7-Dec high	10900 08 Dec high	10846	10401 22 Dec low	10119 14 Dec low	10000 figure	9885 14 Oct low	10711	10786	11020	57
	US 10y Futures	↘	128-00 figure	127-10 11 Dec high	126-19 50-day MA	126-16 break level	125.73	125-21 17 Dec low	125-12+ 16 Dec low	125-11 break level	125-09 04 Dec low	126.22	126.51	126.44	41
	Bund Futures	→	160.66 27-Nov high	160.00 figure	159.36 11-Dec high	159.28 21-Dec high	159.01	157.81 23-Dec low	156.78 16-Dec low	156.42 4-Dec low	155.67 16-Sep high	157.92	157.29	156.60	60
	WTI Oil Futures	→	41.84 23 Nov low	40.69 24 Aug low	40.00 24 Aug low	39.13 15 Dec high	37.16	36.54 break level	35.15 projection	35.00 figure	33.55 Feb '09 continlo	38.13	42.49	51.78	43



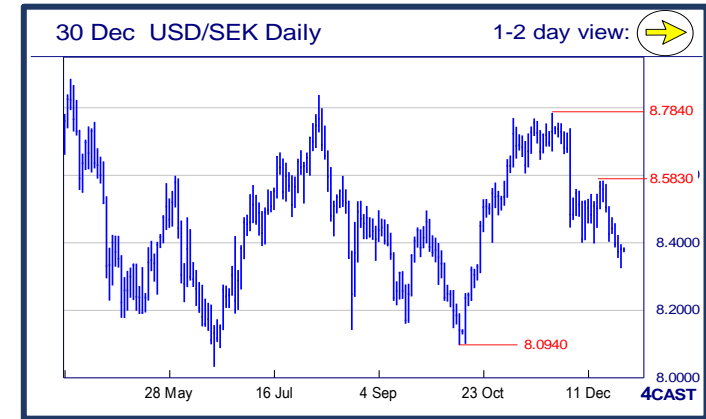
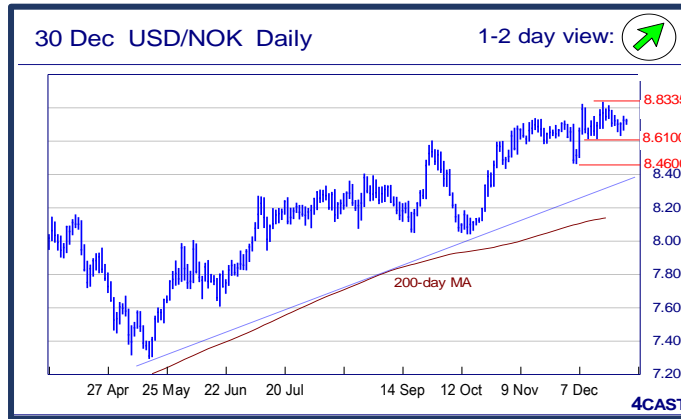
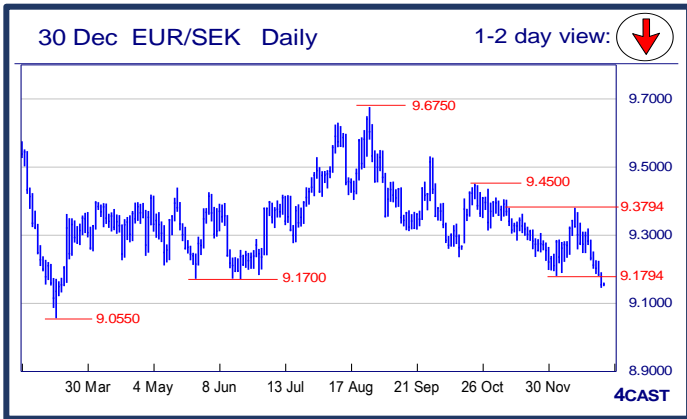
Strong uptrend    Weak uptrend or higher in range    Sideways or in range    Weak downtrend or lower in range    Strong downtrend

Copyright and other intellectual property rights in the material in this document belong to 4CAST Limited and/or 4CAST Inc (4CAST). The material shall not, under any circumstances, be reproduced or distributed in whole or part without the prior written consent of 4CAST. The material in this document is based upon information which 4CAST considers to be reliable and the analysis and opinion in the material represents the view of 4CAST at the time of transmission (unless stated otherwise). Such analysis and opinion is intended for use by parties knowledgeable and experienced in the financial sector and is only one source amongst others to be considered in carrying on their business or activity. ACCORDINGLY 4CAST MAKES NO REPRESENTATION OR WARRANTY EXPRESS OR IMPLIED STATUTORY OR OTHERWISE (INCLUDING BUT NOT LIMITED TO) THE ACCURACY OF THE MATERIAL IN THIS DOCUMENT OR THE FITNESS FOR PURPOSE AND ALL SUCH REPRESENTATIONS AND WARRANTIES ARE HEREBY EXPRESSLY EXCLUDED. 4CAST does not give or purport to give investment advice. Any action taken by users on the basis of material in this document is entirely at their own risk. Independent investment advice should be sought where appropriate. 4CAST website may link to or be linked to other Internet sites. 4CAST does not accept responsibility for the content of such other sites. 4CAST's terms and conditions of business apply to all fee-paying subscribers and trial users.



### NOK, SEK opening updates

	1 day view	Resistance	Support	4cast
EUR/NOK		9.6280	9.4774	With market heading towards the end of Year 2015, liquidity expected to be thin and consolidation seen from last week to extend and best to stay on the sidelines until the wider and stronger 9.4137-9.6080 band is broken. [W.T]
		9.6080	9.4602	
		9.5733	9.4137	
		9.5616	9.3773	
EUR/SEK		9.2513	9.1310	Further crack seen on the downside with strong decline last session below strong support at 9.1794 and poised for extension to 9.1310 ahead of 9.1200. Recovery during intraday trading expected to be weak and seen as selling opportunity. [W.T]
		9.2254	9.1200	
		9.1903	9.1000	
		9.1794	9.0552	
USD/NOK		8.8335	8.6610	A touch firmer in consolidation and further push above 8.7545 resistance will expose further gain to 8.7853 then higher 8.8132. The lower end of consolidation seen at 8.6100 and break will unleash stronger selling. [W.T]
		8.8132	8.6100	
		8.7853	8.5800	
		8.7545	8.4965	
USD/SEK		8.5073	8.3237	Bears extended decline to 8.3237 low last session but strong rebound towards closing in the appearance of a Hammer is easing downside pressure with trade shifting into consolidation with slight bias upside. [W.T]
		8.4745	8.2870	
		8.4568	8.2643	
		8.4220	8.2265	



Strong uptrend   
 Weak uptrend or higher in range   
 Sideways or in range   
 Weak downtrend or lower in range   
 Strong downtrend