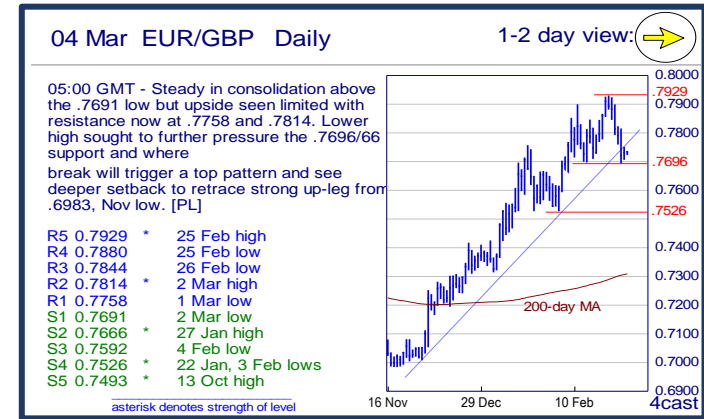
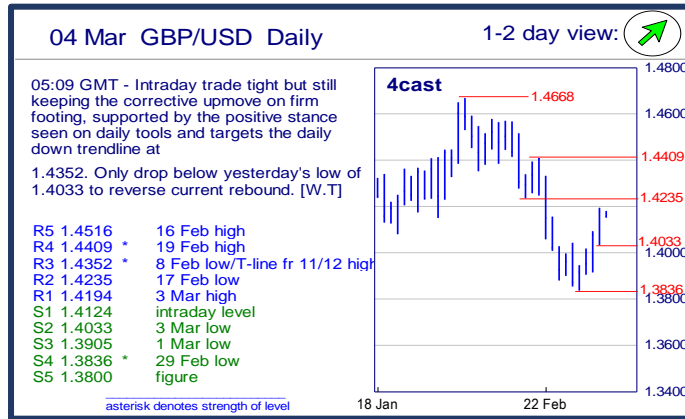
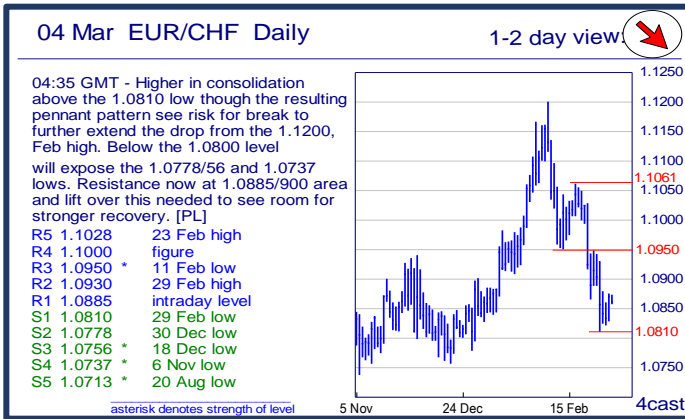
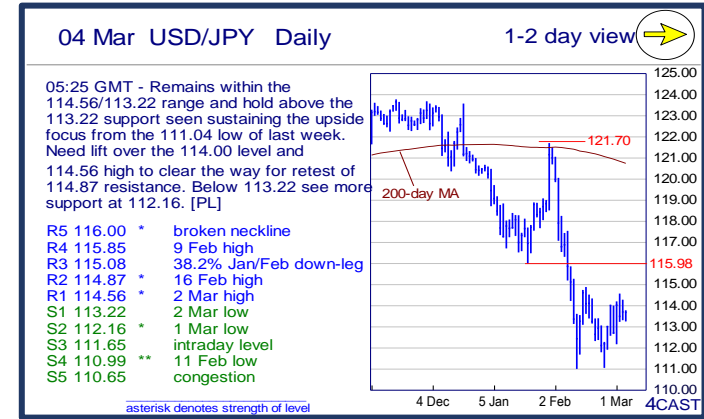
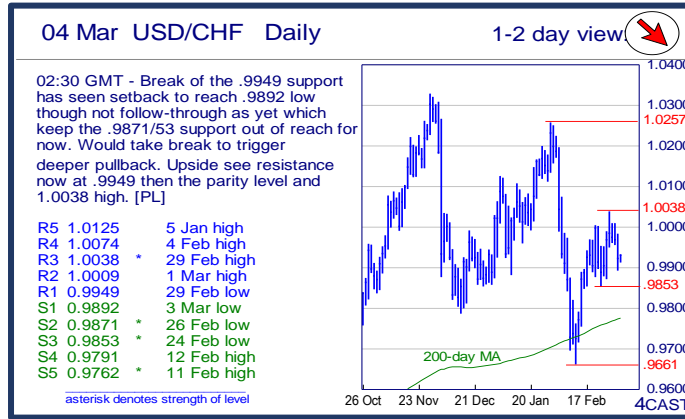
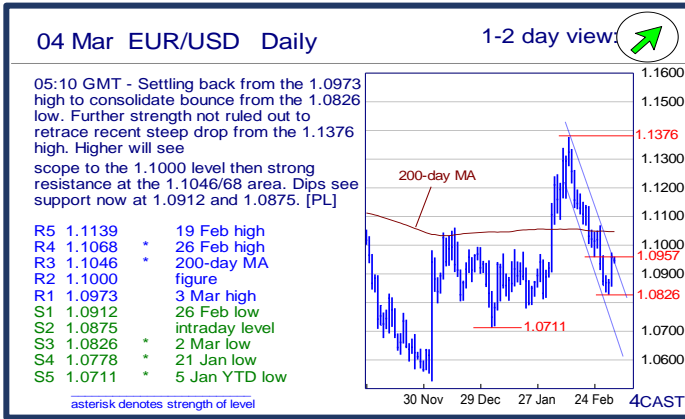


	Trends	Res 4	Res 3	Res 2	Res 1	Spot	Sup 1	Sup 2	Sup 3	Sup 4	MA20	MA50	MA200	RSI 9	
Scandies	EUR/SEK	→	8.4797	9.4312	9.4088	9.3863	9.3392	9.3110	9.2844	9.2514	9.2304	9.4041	9.3318	9.3530	43
	EUR/NOK	↘	9.5745	9.5225	9.5000	9.4490	9.3946	9.3780	9.3280	9.3000	9.2670	9.5332	9.5550	9.2632	33
	USD/SEK	↓	8.6476	8.6254	8.5968	8.5612	8.5302	8.5180	8.4630	8.4422	8.4242	8.4897	8.5023	8.4677	52
	USD/NOK	↓	8.7380	8.7210	8.7000	8.6325	8.5802	8.5660	8.5335	8.5005	8.4665	8.6032	8.7042	8.3862	43
	EUR/DKK	↘	7.4665	7.4662	7.4647	7.46~	7.4589	7.4568	7.4562	7.4545	7.4518	7.4622	7.4625	7.4616	27
	NOK/SEK	→	1.0118	1.0085	1.0027	0.9985	0.9928	0.9899	0.9830	0.9788	0.9768	0.9852	0.9752	1.0092	60
Majors	EUR/USD	↗	1.1068	1.1046	1.1000	1.0973	1.0948	1.0912	1.0875	1.0826	1.0778	1.1076	1.0972	1.1045	43
	USD/JPY	→	115.85	115.08	114.87	114.56	113.76	113.22	112.16	111.65	110.99	113.50	116.56	120.71	49
	EUR/GBP	→	.7880	.7844	.7814	.7758	0.7733	.7691	.7666	.7592	.7526	0.7789	0.7635	0.7306	44
	GBP/USD	↗	1.4409	1.4352	1.4235	1.4194	1.4154	1.4124	1.4033	1.3905	1.3836	1.4218	1.4371	1.5126	50
	USD/CHF	↘	1.0074	1.0038	1.0009	0.9949	0.9920	0.9892	0.9871	0.9853	0.9791	0.9886	0.9980	0.9772	48
	EUR/JPY	↗	126.62	126.10	125.01	124.60	124.56	123.09	122.09	121.95	121.00	125.72	127.87	133.32	45
	EUR/CHF	↘	1.1000	1.0950	1.0930	1.0885	1.0863	1.0810	1.0778	1.0756	1.0737	1.0951	1.0954	1.0792	35
	AUD/USD	↗	.7489	.7440	.7409	.7385	0.7362	.7301	.7259	.7200	.7168	0.7174	0.7108	0.7250	72
	USD/CAD	↘	1.3910	1.3859	1.3656	1.3552	1.3412	1.3383	1.3350	1.3322	1.3300	1.3687	1.3940	1.3292	28
	NZD/USD	↗	.6883	.6834	.6800	.6775	0.6751	.6678	.6662	.9594	.6565	0.6654	0.6615	0.6633	63
	EUR/CAD	↘	1.5265	1.5055	1.4900	1.4750	1.4685	1.4500	1.4380	1.4225	1.4035	1.5165	1.5296	1.4675	31
	GBP/JPY	↗	164.88	163.97	162.48	161.58	161.0500	160.40	159.95	159.66	158.74	161.3750	167.5590	182.7151	49
EM	USD/CNH	↓	6.5497	6.5317	6.5298	6.5164	6.5047	6.4988	6.4866	6.4687	6.4549	6.5322	6.5754	6.4071	29
	USD/ZAR	→	16.650	16.440	16.310	16.000	15.6083	15.445	15.055	14.790	14.490	15.6721	15.9560	14.0189	47
	USD/BRL	↘	4.0730	4.0220	3.9120	3.8448	3.7967	3.7700	3.7000	3.6900	3.6555	3.9519	3.9863	3.6975	28
	USD/MXN	↘	18.620	18.394	18.133	17.952	17.924	17.778	17.750	17.625	17.465	18.378	18.145	16.850	38
	EUR/PLN	↗	4.4175	4.3865	4.3770	4.3700	4.3362	4.3120	4.2680	4.2600	4.2535	4.3776	4.3807	4.2559	37
	EUR/CZK	→	27.19~	27.140	27.131	27.083	27.024	26.960	26.949	26.914	25.710	27.026	27.019	27.073	49
	EUR/HUF	↗	316.35	314.65	312.95~	312.00	309.57	308.30~	306.70	306.48	304.40	309.82	311.97	311.99	48
	EUR/TRY	↘	3.3145	3.2830	3.2705	3.2275	3.1830	3.1380	3.1175	3.0775	3.0075	3.2577	3.2530	3.1825	35
	USD/PLN	→	4.1000	4.0481	4.0055	3.9896	3.9615	3.9575	3.9376	3.8881	3.8590	3.9532	3.9937	3.8558	46
	USD/RUB	↗	82.25	80.63	77.55	76.14	73.09	72.32	72.00	71.70	71.07	76.28	76.40	66.31	35
Other Markets	S&P 500 Futures	→	2035	2017	2003	2000	1990	1939	1917	1877	1800	1915	1932	2009	70
	DAX Futures	↗	10165	10120	9923	9838	9734	9600	9000	8690	8350	9304	9694	10509	61
	US 10y Futures	↘	132-20+	131-14	130-27	130-06+	129.28	129-06	129-05	129-00	128-14	130.81	129.00	126.97	40
	Bund Futures	→	168.00	167.00	166.63	165.83	165.59	164.30~	163.72	162.70	161.55	161.45	162.16	157.89	43
	WTI Oil Futures	→	36.28	36.00	35.81	35.17	34.86	33.98	32.40	30.56	28.74	30.48	33.59	47.35	56

	Trends	Res 4	Res 3	Res 2	Res 1	Spot	Sup 1	Sup 2	Sup 3	Sup 4	MA20	MA 50	MA 200	RSI 9	
Scandies	EUR/SEK	➔	8.4797 18 Feb high	9.4312 12 Feb low	9.4088 22 Feb high	9.3863 26 Feb high	9.3392	9.3110 29 Feb low	9.2844 2 Feb low	9.2514 27 Jan low	9.2304 8 Jan low	9.4041	9.3318	9.3530	43
	EUR/NOK	↘	9.5745 25 Feb high	9.5225 29 Feb high	9.5000 figure	9.4490 2 Mar high	9.3946	9.3780 29 Jan low	9.3280 3 Dec high	9.3000 figure	9.2670 4 Dec low	9.5332	9.5550	9.2632	33
	USD/SEK	↘	8.6476 2 Mar high	8.6254 intraday level	8.5968 intraday level	8.5612 intraday level	8.5302	8.5180 29 Feb low	8.4630 26 Feb low	8.4422 22 Feb low	8.4242 19 Feb low	8.4897	8.5023	8.4677	52
	USD/NOK	↘	8.7380 29 Feb high	8.7210 2 Mar high	8.7000 figure	8.6325 1 Mar low	8.5802	8.5660 3 Mar low	8.5335 18 Feb low	8.5005 11 Feb low	8.4665 4 Feb low	8.6032	8.7042	8.3862	43
	EUR/DKK	↘	7.4665 24-Dec high	7.4662 16-Feb YTD high	7.4647 24-Feb high	7.46~ Wed, Thur pm high	7.4589	7.4568 Dec-15 low	7.4562 2-Mar YTD low	7.4545 Oct-15 low	7.4518 Jul-15 low	7.4622	7.4625	7.4616	27
	NOK/SEK	➔	1.0118 2 Dec high	1.0085 Objective of inver	1.0027 4 Dec high	0.9985 18 Feb high	0.9928	0.9899 23 Feb high	0.9830 1 Mar low	0.9788 29 Feb low	0.9768 25 Feb low	0.9852	0.9752	1.0092	60
Majors	EUR/USD	↗	1.1068 26 Feb high	1.1046 200-day MA	1.1000 figure	1.0973 3 Mar high	1.0948	1.0912 26 Feb low	1.0875 intraday level	1.0826 2 Mar low	1.0778 21 Jan low	1.1076	1.0972	1.1045	43
	USD/JPY	➔	115.85 9 Feb high	115.08 38.2%Jan/Feb dc	114.87 16 Feb high	114.56 2 Mar high	113.76	113.22 2 Mar low	112.16 1 Mar low	111.65 intraday level	110.99 11 Feb low	113.50	116.56	120.71	49
	EUR/GBP	➔	.7880 25 Feb low	.7844 26 Feb low	.7814 2 Mar high	.7758 1 Mar low	0.7733	.7691 2 Mar low	.7666 27 Jan high	.7592 4 Feb low	.7526 22 Jan, 3 Feb low	0.7789	0.7635	0.7306	44
	GBP/USD	↗	1.4409 19 Feb high	1.4352 8 Feb low/T-line f	1.4235 17 Feb low	1.4194 3 Mar high	1.4154	1.4124 intraday level	1.4033 3 Mar low	1.3905 1 Mar low	1.3836 29 Feb low	1.4218	1.4371	1.5126	50
	USD/CHF	↘	1.0074 4 Feb high	1.0038 29 Feb high	1.0009 1 Mar high	0.9949 29 Feb low	0.9920	0.9892 3 Mar low	0.9871 26 Feb low	0.9853 24 Feb low	0.9791 12 Feb high	0.9886	0.9980	0.9772	48
	EUR/JPY	↗	126.62 16 Feb low	126.10 2015 low	125.01 26 Feb high	124.60 3 Mar high	124.56	123.09 2 Mar low	122.09 1 Mar low	121.95 50%2012/2014 up	121.00 projection	125.72	127.87	133.32	45
	EUR/CHF	↘	1.1000 figure	1.0950 11 Feb low	1.0930 29 Feb high	1.0885 intraday level	1.0863	1.0810 29 Feb low	1.0778 30 Dec low	1.0756 18 Dec low	1.0737 6 Nov low	1.0951	1.0954	1.0792	35
	AUD/USD	↗	.7489 15 Jul high	.7440 11 Aug high	.7409 13 Aug high	.7385 4 Dec high	0.7362	.7301 2 Mar high	.7259 23 Feb high	.7200 figure	.7168 29 Feb high	0.7174	0.7108	0.7250	72
	USD/CAD	↘	1.3910 16 Feb high	1.3859 24 Feb high	1.3656 100-day MA	1.3552 01 Mar high	1.3412	1.3383 01 Mar low	1.3350 break level	1.3322 projection	1.3300 figure	1.3687	1.3940	1.3292	28
	NZD/USD	↗	.6883 29 Dec high	.6834 16 Dec high	.6800 figure	.6775 26 Feb high	0.6751	.6678 2 Mar high	.6662 intraday level	.9594 2 Mar low	.6565 19 Feb low	0.6654	0.6615	0.6633	63
	EUR/CAD	↘	1.5265 24-Feb high	1.5055 24-Feb low	1.4900 25-Feb low	1.4750 1-Mar high	1.4685	1.4500 7-Dec low	1.4380 12-Nov high	1.4225 1-Dec high	1.4035 3-Dec low	1.5165	1.5296	1.4675	31
GBP/JPY	↗	164.88 50%of 175.02-154	163.97 18 Feb high	162.48 38.2%of 175.02-1	161.58 17 Feb low	161.05	160.40 intraday level	159.95 intraday level	159.66 3 Mar low	158.74 2 Mar low	161.38	167.56	182.72	49	
EM	USD/CNH	↘	6.5497 3 Mar high	6.5317 26 Feb low	6.5298 intraday level	6.5164 18 Feb low	6.5047	6.4988 16 Feb low	6.4866 15 Feb low	6.4687 50%of 6.1863-6.7	6.4549 3 Dec high	6.5322	6.5754	6.4071	29
	USD/ZAR	➔	16.650 26-Jan high	16.440 3-Feb high	16.310 26-Feb high	16.000 figure	15.608	15.445 22-Feb high	15.055 23-Feb low	14.790 16-Dec low	14.490 30-Nov high	15.672	15.956	14.019	47
	USD/BRL	↘	4.0730 07 Jan high	4.0220 22 Feb high	3.9120 100-day MA	3.8448 4 Feb low	3.7967	3.7700 projection	3.7000 Nov lows	3.6900 200-day MA	3.6555 26 Aug high	3.9519	3.9863	3.6975	28
	USD/MXN	↘	18.620 10 Feb low	18.394 18 Feb high	18.133 50-day MA	17.952 17 Feb low	17.924	17.778 02 Mar low	17.750 projection	17.625 projection	17.465 break level	18.378	18.145	16.850	38
	EUR/PLN	↗	4.4175 16-Feb high	4.3865 24-Feb/ last week	4.3770 29-Feb high	4.3700 2015high, st-Feb	4.3362	4.3120 Wed low	4.2680 4-Jan low	4.2600 1-Jan high/ gap lo	4.2535 1-Jan YTD low	4.3776	4.3807	4.2559	37
	EUR/CZK	➔	27.19~ 1-Oct high	27.140 Oct high	27.131 11-Feb YTD high	27.083 26-Feb high	27.024	26.960 Feb low	26.949 Dec-15/ last year l	26.914 8-Nov-13 low	25.710 7-Nov-13 low	27.026	27.019	27.073	49
	EUR/HUF	↗	316.35 20-Jan high	314.65 28-Jan high	312.95~ 9 & 11-Feb highs	312.00 17, 26-Feb highs	309.57	308.30~ 1-Mar low	306.70 start Aug-15 lows	306.48 22-Feb YTD low	304.40 19-May-15 low	309.82	311.97	311.99	48
	EUR/TRY	↘	3.3145 19-Feb high	3.2830 22-Feb high	3.2705 29-Feb high	3.2275 1-Mar high	3.1830	3.1380 18-Dec low	3.1175 27-Nov high	3.0775 2-Dec high	3.0075 23-Nov low	3.2577	3.2530	3.1825	35
	USD/PLN	➔	4.1000 break level	4.0481 03 Feb high	4.0055 29 Feb high	3.9896 50-day MA	3.9615	3.9575 100-day MA	3.9376 26 Feb low	3.8881 11 Feb low	3.8590 28 Dec low	3.9532	3.9937	3.8558	46
USD/RUB	↗	82.25 26 Jan high	80.63 11 Feb high	77.55 24 Feb high	76.14 50-day MA	73.09	72.32 Jan low	72.00 projection	71.70 2015 tops	71.07 100-day MA	76.28	76.40	66.31	35	
Other Markets	S&P 500 Futures	➔	2035 28 Dec low	2017 5 Jan high	2003 200-day MA	2000 figure	1990	1939 13 Jan high	1917 29 Feb low	1877 24 Feb low	1800 figure	1915	1932	2009	70
	DAX Futures	↗	10165 13 Jan high	10120 break level	9923 27 Jan high	9838 02 Mar high	9734	9600 break level	9000 gap break	8690 11 Feb low	8350 early-Oct '14 low	9304	9694	10509	61
	US 10y Futures	↘	132-20+ 11 Feb high	131-14 24 Feb high	130-27 01 Mar high	130-06+ break level	129.28	129-06 02 Mar low	129-05 projection	129-00 figure	128-14 50-day MA	130.81	129.00	126.97	40
	Bund Futures	➔	168.00 figure	167.00 figure	166.63 29-Feb high	165.83 2-Mar high	165.59	164.30~ channel bottom	163.72 08-Feb low	162.70 29-Jan low, gap	161.55 26-Jan low	161.45	162.16	157.89	43
	WTI Oil Futures	➔	36.28 28 Jan high	36.00 figure	35.81 figure	35.17 02 Mar high	34.86	33.98 50-day MA	32.40 24 Feb high	30.56 24 Feb low	28.74 11 Feb low	30.48	33.59	47.35	56

Copyright and other intellectual property rights in the material in this document belong to 4CAST Limited and/or 4CAST Inc (4CAST). The material shall not, under any circumstances, be reproduced or distributed in whole or part without the prior written consent of 4CAST. The material in this document is based upon information which 4CAST considers to be reliable and the analysis and opinion in the material represents the view of 4CAST at the time of transmission (unless stated otherwise). Such analysis and opinion is subject to change without notice. The material is intended for use by parties knowledgeable and experienced in the financial sector and is only one source amongst others to be considered in carrying on their business or activity. ACCORDINGLY 4CAST MAKES NO REPRESENTATION OR WARRANTY EXPRESS OR IMPLIED STATUTORY OR OTHERWISE (INCLUDING BUT NOT LIMITED TO) THE ACCURACY OF THE MATERIAL IN THIS DOCUMENT OR THE FITNESS FOR PURPOSE AND ALL SUCH REPRESENTATIONS AND WARRANTIES ARE HEREBY EXPRESSLY EXCLUDED. 4CAST does not give or purport to give investment advice. Any action taken by users on the basis of material in this document is entirely at their own risk. Independent investment advice should be sought where appropriate. 4CAST website may link to or be linked to other Internet sites. 4CAST does not accept responsibility for the content of such other sites. 4CAST's terms and conditions of business apply to all fee-paying subscribers and trial users.



Strong uptrend



Weak uptrend or higher in range



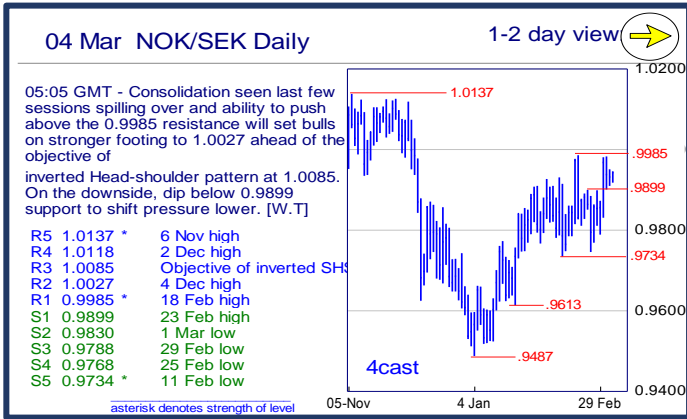
Sideways or in range



Weak downtrend or lower in range

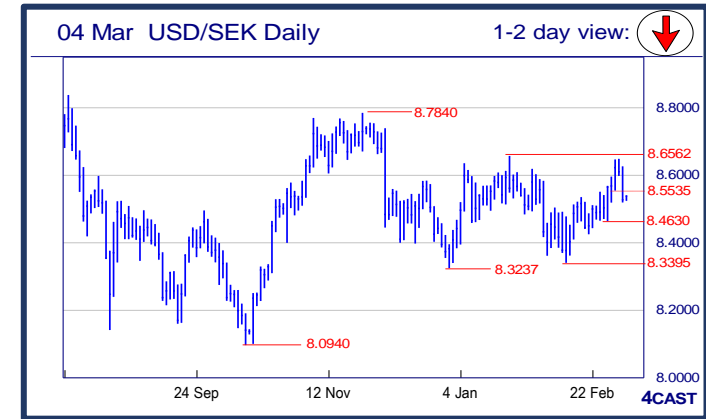
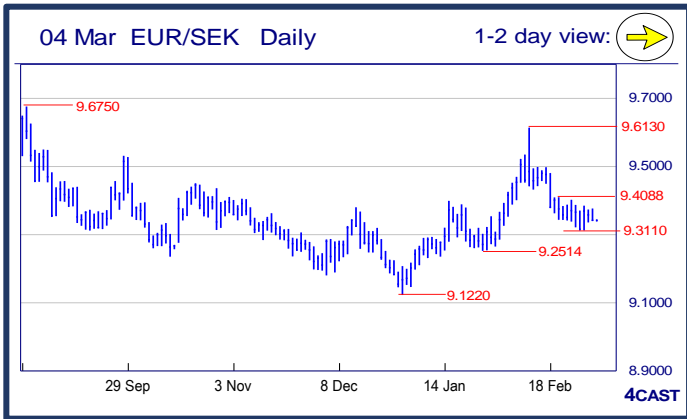


Strong downtrend



NOK, SEK opening updates

	1 day view	Resistance	Support	4cast
EUR/NOK		9.5745 9.5225 9.5000 9.4490	9.3780 9.3280 9.3000 9.2670	Keeping below the 9.4500 level and setback below the 9.4000 level see scope for retest of 9.3780 low. Break of the latter will trigger a double top pattern at the 9.7480 high and see further decline to 9.3280 and the 9.3000 level. [P.L]
EUR/SEK		8.4797 9.4312 9.4088 9.3863	9.3110 9.2844 9.2514 9.2304	Both daily chart pattern and technical tools seen at neutral ground, prolonging the consolidation seen whole of this week and breaking below 9.3110 support will revive bigger downmove from the 9.6130 high. [W.T]
USD/NOK		8.7380 8.7210 8.7000 8.6325	8.5660 8.5335 8.5005 8.4665	Drop through the 8.5885 support return focus to the downside to reach 8.5660 low. Lower will see deeper setback to 8.5335 and the 8.5000 level then the 8.4465, Feb YTD low. Resistance now at 8.6325 and 8.7000 level. [P.L]
USD/SEK		8.6476 8.6254 8.5968 8.5612	8.5180 8.4630 8.4422 8.4242	Sharp decline seen last session jeopardised the 3-week upmove and with daily technical tools turning down, further weakness eyes lower support at 8.4630 then lower 8.4242. Intraday strength to attract sellers. [W.T]



Strong uptrend
 Weak uptrend or higher in range
 Sideways or in range
 Weak downtrend or lower in range
 Strong downtrend

Copyright and other intellectual property rights in the material in this document belong to 4CAST Limited and/or 4CAST Inc (4CAST). The material shall not, under any circumstances, be reproduced or distributed in whole or part without the prior written consent of 4CAST. The material in this document is based upon information which 4CAST considers to be reliable and the analysis and opinion in the material represents the view of 4CAST at the time of transmission (unless stated otherwise). Such analysis and opinion is subject to change without notice. The material is intended for use by parties knowledgeable and experienced in the financial sector and is only one source amongst others to be considered in carrying on their business or activity. ACCORDINGLY 4CAST MAKES NO REPRESENTATION OR WARRANTY EXPRESS OR IMPLIED STATUTORY OR OTHERWISE (INCLUDING BUT NOT LIMITED TO) THE ACCURACY OF THE MATERIAL IN THIS DOCUMENT OR THE FITNESS FOR PURPOSE AND ALL SUCH REPRESENTATIONS AND WARRANTIES ARE HEREBY EXPRESSLY EXCLUDED. 4CAST does not give or purport to give investment advice. Any action taken by users on the basis of material in this document is entirely at their own risk. Independent investment advice should be sought where appropriate. 4CAST website may link to or be linked to other Internet sites. 4CAST does not accept responsibility for the content of such other sites. 4CAST's terms and conditions of business apply to all fee-paying subscribers and trial users.