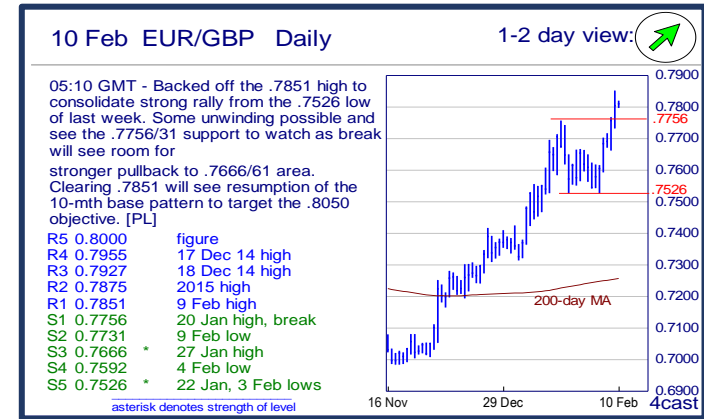
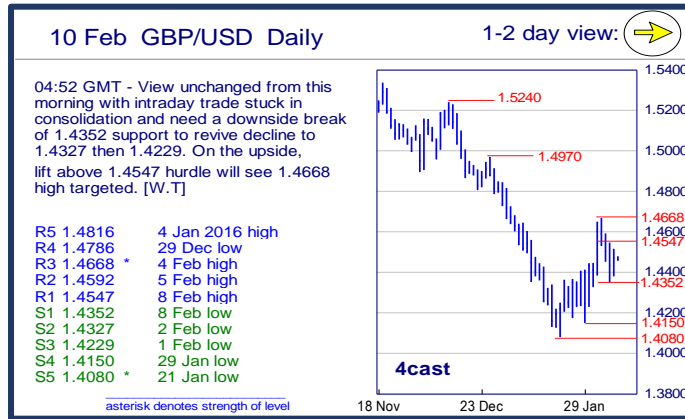
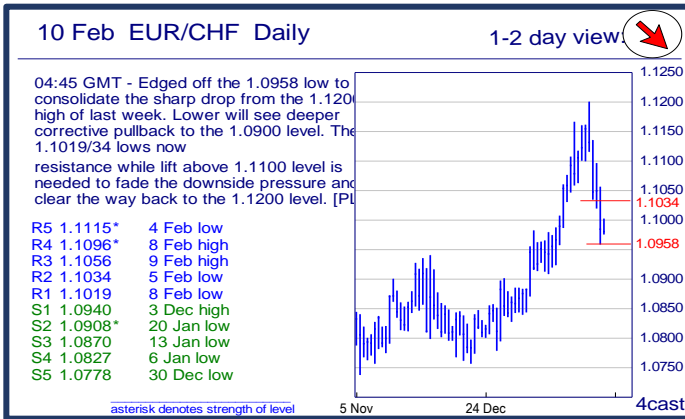
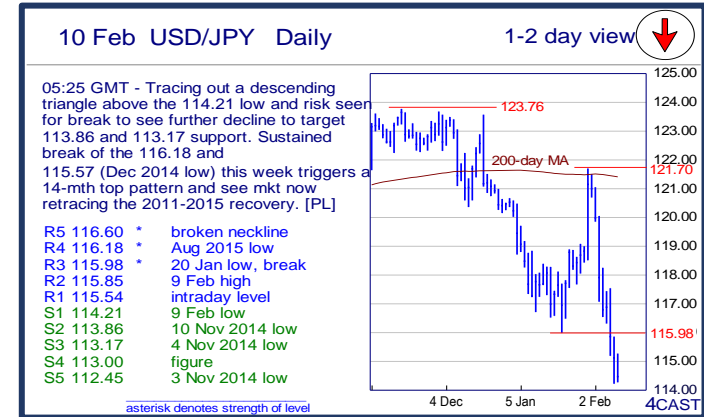
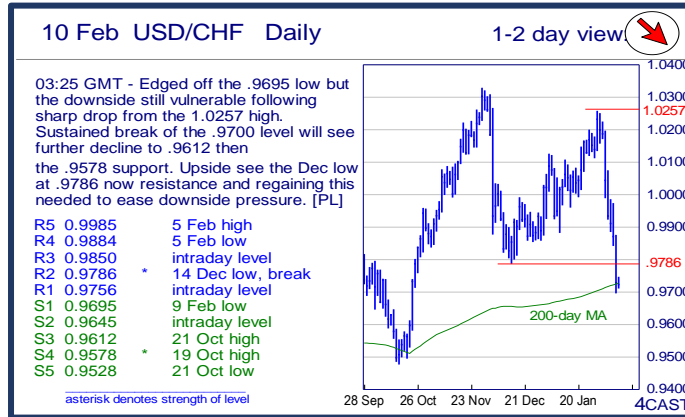
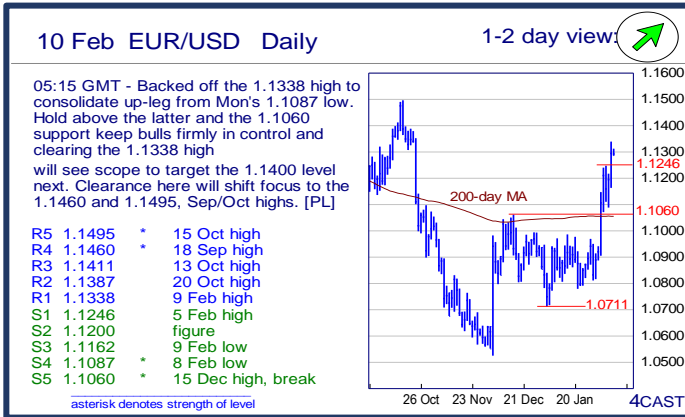


	Trends	Res 4	Res 3	Res 2	Res 1	Spot	Sup 1	Sup 2	Sup 3	Sup 4	MA20	MA50	MA200	RSI 9	
Scandies	EUR/SEK	↑	9.6000	9.5796	9.5488	9.5304	9.4953	9.4682	9.4514	9.3982	9.3872	9.3507	9.2902	9.3451	76
	EUR/NOK	↗	9.8905	9.8000	9.7480	9.7195	9.6784	9.6270	9.6000	9.5805	9.5275	9.5478	9.5484	9.1703	66
	USD/SEK	→	8.6180	8.5825	8.5033	8.4576	8.4073	8.3835	8.3605	8.3237	8.2871	8.5153	8.4955	8.4541	38
	USD/NOK	→	8.7565	8.7460	8.6530	8.6255	8.5690	8.5325	8.5000	8.4465	8.4310	8.6944	8.7302	8.2967	38
	EUR/DKK	→	7.47~	7.4685	7.4665	7.4655	7.4634	7.4610	7.4570	7.4568	7.4545	7.4634	7.4625	7.4614	50
	NOK/SEK	↘	0.9977	0.9934	0.9926	0.9890	0.9799	0.9766	0.9746	0.9729	0.9613	0.9778	0.9716	1.0191	52
Majors	EUR/USD	↗	1.1460	1.1411	1.1387	1.1338	1.1293	1.1246	1.1200	1.1162	1.1087	1.0978	1.0932	1.1053	76
	USD/JPY	↓	116.18	115.98	115.85	115.54	114.51	114.21	113.86	113.17	113.00	117.82	119.44	121.38	25
	EUR/GBP	↗	.7955	.7927	.7875	.7851	0.7803	.7756	.7731	.7666	.7592	0.7647	0.7460	0.7254	74
	GBP/USD	→	1.4786	1.4668	1.4592	1.4547	1.4468	1.4352	1.4327	1.4229	1.4150	1.4353	1.4656	1.5240	53
	USD/CHF	↘	0.9884	0.9850	0.9786	0.9756	0.9722	0.9695	0.9645	0.9612	0.9578	1.0038	0.9978	0.9723	21
	EUR/JPY	↘	132.03	131.66	130.91	130.27	129.34	128.76	128.28	127.82	127.42	129.33	130.56	134.15	44
	EUR/CHF	↘	1.1096	1.1056	1.1034	1.1019	1.0978	1.0940	1.0908	1.0870	1.0827	1.1022	1.0912	1.0746	39
	AUD/USD	→	.7243	.7219	.7172	.7129	0.7052	.7051	.7018	.6974	.6957	0.7022	0.7122	0.7308	48
	USD/CAD	↘	1.4000	1.3977	1.3950	1.3943	1.3905	1.3800	1.3705	1.3625	1.3568	1.4127	1.3964	1.3168	43
	NZD/USD	→	.6800	.6752	.6682	.6669	0.6612	.6600	.6560	.6509	.6450	0.6524	0.6644	0.6691	55
	EUR/CAD	→	1.6200	1.6105	1.5875	1.5740	1.5706	1.5335	1.5110	1.4955	1.4800	1.5509	1.5265	1.4549	66
GBP/JPY	→	169.85	168.98	167.72	167.23	165.7000	164.56	163.99	163.88	163.68	169.1220	175.1110	185.0397	31	
EM	USD/CNH	↓	6.6557	6.6412	6.6188	6.5918	6.5527	6.5252	6.5142	6.5000	6.4718	6.5962	6.5717	6.3797	33
	USD/ZAR	→	17.100	16.970	16.650	16.440	16.0421	15.745	15.270	15.055	14.790	16.3072	15.7598	13.7089	46
	USD/BRL	↘	4.0280	4.0000	3.9520	3.9080	3.8845	3.8430	3.8000	3.7700	3.7000	4.0057	3.9554	3.6207	33
	USD/MXN	→	18.985	18.950	18.934	18.885	18.804	18.472	18.000	17.844	17.669	18.405	17.729	16.589	67
	EUR/PLN	→	4.5975	4.5235	4.50~	4.4720	4.4427	4.43~	4.3700	4.3695	4.3285	4.4427	4.3585	4.2322	57
	EUR/CZK	→	27.19~	27.140	27.105	27.087	26.991	26.960	26.949	26.914	25.710	27.013	27.015	27.104	39
	EUR/HUF	↘	318.00	316.35	314.65	312.10	311.95	309.60	309.35	308.62	306.70	312.34	313.77	311.75	50
	EUR/TRY	↗	3.4295	3.4000	3.3760	3.3545	3.3182	3.2410	3.1980	3.1635	3.1380	3.2716	3.2351	3.1553	67
	USD/PLN	↘	4.1000	4.0481	4.0000	3.9908	3.9348	3.9244	3.9235	3.9000	3.8590	4.0491	3.9880	3.8315	31
USD/RUB	↘	85.95	82.25	80.00	79.90	79.45	75.50	73.97	72.32	71.70	78.38	74.39	64.15	58	
Other Markets	S&P 500 Futures	↘	1973	1953	1947	1885	1841	1825	1821	1804	1800	1884	1968	2021	33
	DAX Futures	↓	9800	9620	9467	9251	8907	8768	8700	8641	8350	9563	10186	10699	22
	US 10y Futures	→	135-15+	132-00	131-24	131-16	131-16	130-24	129-22	128-00	127-16	129.37	127.60	126.59	85
	Bund Futures	→	167.00	166.00	165.25	165.23	164.63	163.72	162.70	161.55	161.13	157.92	159.55	157.24	58
	WTI Oil Futures	↘	35.75	35.00	34.82	29.25	28.58	27.96	27.87	27.65	27.56	30.85	35.42	48.55	37



	Trends	Res 4	Res 3	Res 2	Res 1	Spot	Sup 1	Sup 2	Sup 3	Sup 4	MA20	MA 50	MA 200	RSI 9	
Scandies	EUR/SEK	↑	9.6000 figure	9.5796 26 Aug low	9.5488 1 Sep high	9.5304 28 Sep high	9.4953	9.4682 intraday level	9.4514 9 Feb low	9.3982 15 Jan high	9.3872 5 Feb low	9.3507	9.2902	9.3451	76
	EUR/NOK	↗	9.8905 2014 high	9.8000 figure	9.7480 12 Jan high	9.7195 9 Feb high	9.6784	9.6270 8 Feb high	9.6000 figure	9.5805 3 Feb high	9.5275 8 Feb low	9.5478	9.5484	9.1703	66
	USD/SEK	→	8.6180 29 Jan high	8.5825 3 Feb high	8.5033 8 Feb high	8.4576 7 Jan low	8.4073	8.3835 5 Feb low	8.3605 4 Feb low	8.3237 29 Dec low	8.2871 21 Oct low	8.5153	8.4955	8.4541	38
	USD/NOK	→	8.7565 15 Jan low	8.7460 2 Feb high	8.6530 8 Feb high	8.6255 9 Feb high	8.5690	8.5325 8 Feb low	8.5000 figure	8.4465 4 Feb low	8.4310 2 Nov low	8.6944	8.7302	8.2967	38
	EUR/DKK	→	7.47~ early Apr lows	7.4685 May-15 high	7.4665 24-Dec high	7.4655 20-1-Jan YTD high	7.4634	7.4610 last week low	7.4570 7-Jan low	7.4568 Dec-15 low	7.4545 Oct-15 low	7.4634	7.4625	7.4614	50
	NOK/SEK	↘	0.9977 7 Dec high	0.9934 12 Nov low	0.9926 4 Feb high	0.9890 9 Feb high	0.9799	0.9766 2 Feb low	0.9746 25 Jan low	0.9729 22 Jan low	0.9613 21 Jan low	0.9778	0.9716	1.0191	52
Majors	EUR/USD	↗	1.1460 18 Sep high	1.1411 13 Oct high	1.1387 20 Oct high	1.1338 9 Feb high	1.1293	1.1246 5 Feb high	1.1200 figure	1.1162 9 Feb low	1.1087 8 Feb low	1.0978	1.0932	1.1053	76
	USD/JPY	↘	116.18 Aug 2015 low	115.98 20 Jan low, break	115.85 9 Feb high	115.54 intraday level	114.51	114.21 9 Feb low	113.86 10 Nov 2014 low	113.17 4 Nov 2014 low	113.00 figure	117.82	119.44	121.38	25
	EUR/GBP	↗	.7955 17 Dec 14 high	.7927 18 Dec 14 high	.7875 2015 high	.7851 9 Feb high	0.7803	.7756 20 Jan high, break	.7731 9 Feb low	.7666 27 Jan high	.7592 4 Feb low	0.7647	0.7460	0.7254	74
	GBP/USD	→	1.4786 29 Dec low	1.4668 4 Feb high	1.4592 5 Feb high	1.4547 8 Feb high	1.4468	1.4352 8 Feb low	1.4327 2 Feb low	1.4229 1 Feb low	1.4150 29 Jan low	1.4353	1.4656	1.5240	53
	USD/CHF	↘	0.9884 5 Feb low	0.9850 intraday level	0.9786 14 Dec low, break	0.9756 intraday level	0.9722	0.9695 9 Feb low	0.9645 intraday level	0.9612 21 Oct high	0.9578 19 Oct high	1.0038	0.9978	0.9723	21
	EUR/JPY	↘	132.03 1 Feb high	131.66 4 Feb high	130.91 8 Feb high	130.27 9 Feb high	129.34	128.76 8 Feb low	128.28 9 Feb low	127.82 26 Jan low	127.42 22 Jan low	129.33	130.56	134.15	44
	EUR/CHF	↘	1.1096 8 Feb high	1.1056 9 Feb high	1.1034 5 Feb low	1.1019 8 Feb low	1.0978	1.0940 3 Dec high	1.0908 20 Jan low	1.0870 13 Jan low	1.0827 6 Jan low	1.1022	1.0912	1.0746	39
	AUD/USD	→	.7243 4 Feb high	.7219 5 Feb high	.7172 intraday level	.7129 8 Feb high	0.7052	.7051 8 Feb low	.7018 intraday level	.6974 3 Feb low	.6957 19 Jan high, break	0.7022	0.7122	0.7308	48
	USD/CAD	↘	1.4000 figure	1.3977 08 Feb high	1.3950 break level	1.3943 50-day MA	1.3905	1.3800 break level	1.3705 05 Feb low	1.3625 early-Dec break	1.3568 100-day MA	1.4127	1.3964	1.3168	43
	NZD/USD	→	.6800 figure	.6752 5 Feb high	.6682 intraday level	.6669 9 Feb high	0.6612	.6600 figure	.6560 21 Jan high, break	.6509 3 Feb low	.6450 1 Feb low	0.6524	0.6644	0.6691	55
	EUR/CAD	→	1.6200 figure	1.6105 20-Jan high	1.5875 21-Jan high	1.5740 20-Jan low	1.5706	1.5335 1-Feb high	1.5110 1-Feb low	1.4955 5-Jan low	1.4800 figure	1.5509	1.5265	1.4549	66
	GBP/JPY	→	169.85 intraday level	168.98 intraday level	167.72 intraday level	167.23 9 Feb high	165.70	164.56 9 Feb low	163.99 20 Jan low	163.88 4 Feb 2014 low	163.68 26 Nov 2013 low	169.12	175.11	185.04	31
EM	USD/CNH	↘	6.6557 50% of 6.750-6.5	6.6412 intraday level	6.6188 4 Feb high	6.5918 29 Jan low	6.5527	6.5252 22 Dec low	6.5142 16 Dec low	6.5000 figure	6.4718 8 Dec low	6.5962	6.5717	6.3797	33
	USD/ZAR	→	17.100 figure	16.970 18-Jan high	16.650 26-Jan high	16.440 3-Feb high	16.042	15.745 4-Feb low	15.270 30-Dec low	15.055 28-Dec low	14.790 16-Dec low	16.307	15.760	13.709	46
	USD/BRL	↘	4.0280 break level	4.0000 figure	3.9520 50-day MA	3.9080 100-day MA	3.8845	3.8430 04 Feb low	3.8000 break level	3.7700 projection	3.7000 Nov lows	4.0057	3.9554	3.6207	33
	USD/MXN	→	18.985 projection	18.950 projection	18.934 intraday high	18.885 break level	18.804	18.472 05 Feb high	18.000 break level	17.844 15 Jan low	17.669 50-day MA	18.405	17.729	16.589	67
	EUR/PLN	→	4.5975 Dec 2011 high	4.5235 Jan 2012 high	4.50~ fr mid-Jan highs	4.4720 Tues pm high	4.4427	4.43~ recent breaks	4.3700 2-Feb low	4.3695 2015 high	4.3285 13-Jan low	4.4427	4.3585	4.2322	57
	EUR/CZK	→	27.19~ 1-Oct high	27.140 Oct high	27.105 3-Dec high	27.087 5-Feb high	26.991	26.960 Jan low	26.949 Dec-15/ last year l	26.914 8-Nov-13 low	25.710 7-Nov-13 low	27.013	27.015	27.104	39
	EUR/HUF	↘	318.00 Jul high, 11-Dec high	316.35 20-Jan high	314.65 last week high	312.10 2, 3-Feb highs	311.95	309.60 2-Feb YTD low	309.35 3-Dec low	308.62 20-Nov low	306.70 start Aug low	312.34	313.77	311.75	50
	EUR/TRY	↗	3.4295 2-Oct high	3.4000 figure	3.3760 14-Oct high	3.3545 20-Jan high	3.3182	3.2410 8-Feb low	3.1980 1-Feb low	3.1635 4-Jan low	3.1380 18-Dec low	3.2716	3.2351	3.1553	67
	USD/PLN	↘	4.1000 break level	4.0481 03 Feb high	4.0000 figure	3.9908 50-day MA	3.9348	3.9244 100-day MA	3.9235 05 Feb low	3.9000 break level	3.8590 28 Dec low	4.0491	3.9880	3.8315	31
	USD/RUB	↘	85.95 21 Jan high	82.25 26 Jan high	80.00 Dec '14 high; break	79.90 02, 03 Feb highs	79.45	75.50 04 Feb low	73.97 50-day MA	72.32 05 Jan low	71.70 2015 tops	78.38	74.39	64.15	58
Other Markets	S&P 500 Futures	↘	1973 50-day MA	1953 50% from Nov '15	1947 13 Jan high	1885 08 Feb high	1841	1825 intraday low	1821 08 Feb low	1804 20 Jan low	1800 figure	1884	1968	2021	33
	DAX Futures	↘	9800 break level	9620 04 Feb high	9467 05 Feb high	9251 break level	8907	8768 09 Feb low	8700 figure	8641 mid-Oct '14 low	8350 early-Oct '14 low	9563	10186	10699	22
	US 10y Futures	→	135-15+ Jul '12 contin high	132-00 projection	131-24 o/n session high	131-16 break level	131-16	130-24 03 Feb high	129-22 29 Jan high	128-00 break level	127-16 50-day MA	129.37	127.60	126.59	85
	Bund Futures	→	167.00 figure	166.00 figure	165.25 projection	165.23 09 Feb high	164.63	163.72 08 Feb low	162.70 29 Jan low, gap	161.55 26 Jan low	161.13 25 Jan low	157.92	159.55	157.24	58
	WTI Oil Futures	↘	35.75 50-day MA	35.00 figure	34.82 figure	29.25 26 Jan low	28.58	27.96 intraday low	27.87 21 Jan low	27.65 break level	27.56 20 Jan low	30.85	35.42	48.55	37







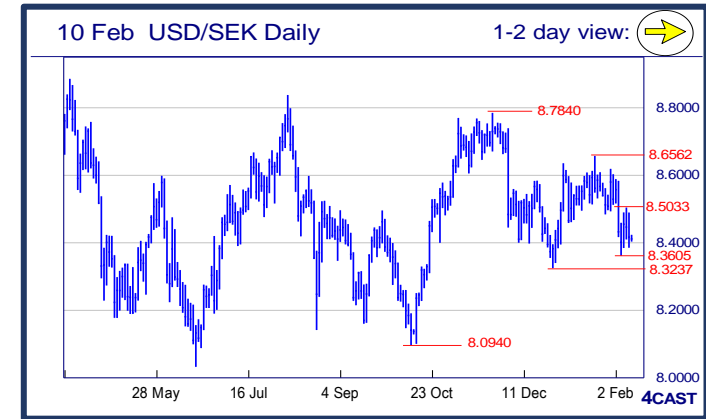
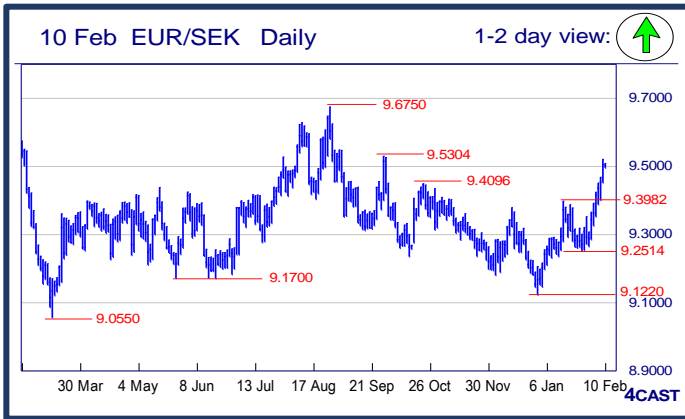
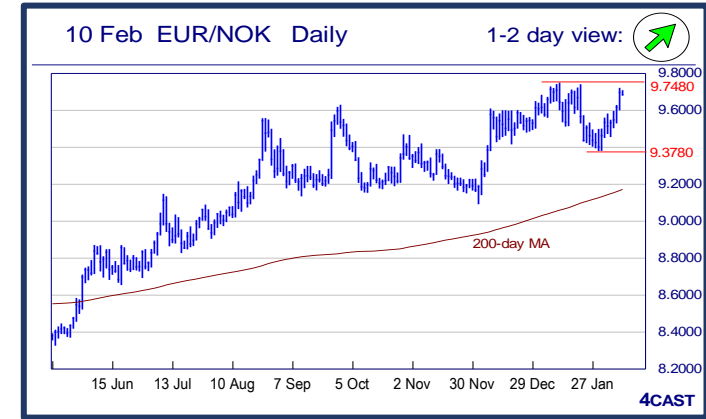
Strong uptrend Weak uptrend or higher in range Sideways or in range Weak downtrend or lower in range Strong downtrend








NOK, SEK opening updates

	1 day view	Resistance	Support	4cast
EUR/NOK		9.8905	9.6270	Sharp rally reached 9.7195 high yesterday and see the 9.7390/9.7480 highs of Jan now within reach. Clearance here will shift focus to the 9.8000 level then 9.8905, 2014 high. Support now at 9.6270 and the 9.6000 level. [P.L]
		9.8000	9.6000	
		9.7480	9.5805	
		9.7195	9.5275	
		9.6000	9.4682	
EUR/SEK		9.5796	9.4514	Another sharp rally last session to 9.5213 high keeping the upmove from 9.2514 low on firmer footing despite the overbought condition seen on daily tools and only watch a break of 9.4514 support to expose room for pullback. [W.T]
		9.5488	9.3982	
		9.5304	9.3872	
USD/NOK		8.7565	8.5325	Backed off the 8.6530 high though the downside still limited and see the 8.5325 support to watch. Break of the latter will return focus to the downside for retest of the 8.4465 low of last week and see scope for bear extension. [P.L]
		8.7460	8.5000	
		8.6530	8.4465	
		8.6255	8.4310	
USD/SEK		8.6180	8.3835	Consolidation extending with a slight bias downside and need a sustained push below 8.3605 support to trigger renewed weakness to 8.3237 strong support. Lift above 8.5033 hurdle to reverse focus towards upside. [W.T]
		8.5825	8.3605	
		8.5033	8.3237	
		8.4576	8.2871	



 Strong uptrend
  Weak uptrend or higher in range
  Sideways or in range
  Weak downtrend or lower in range
  Strong downtrend