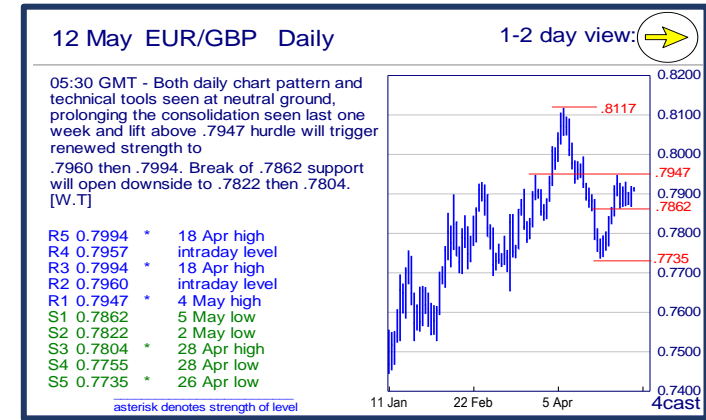
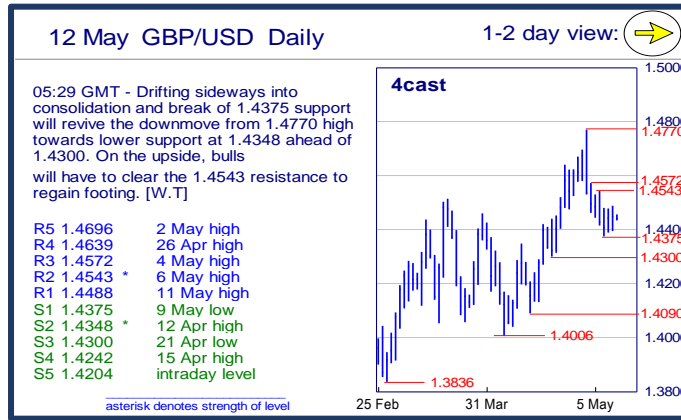
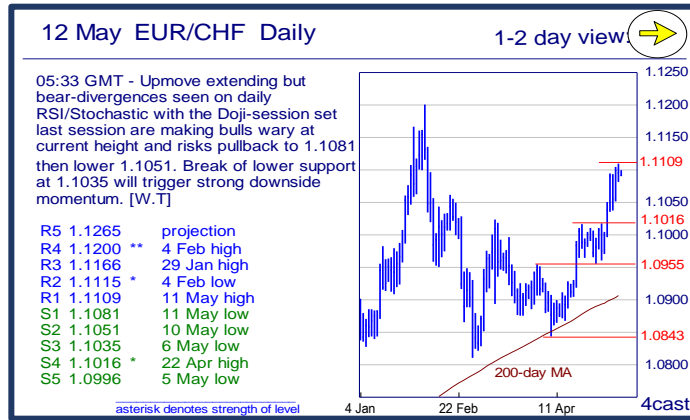
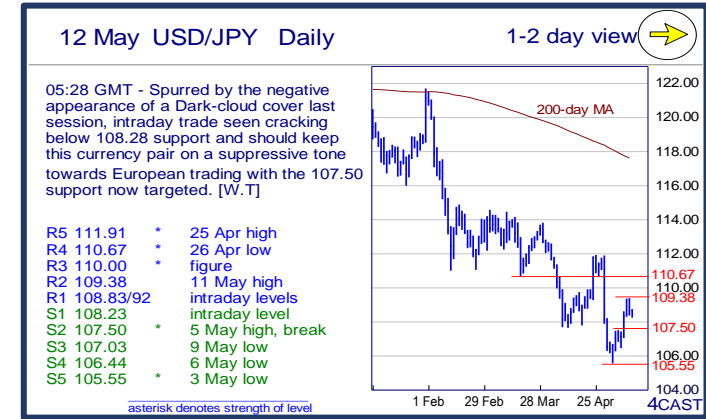
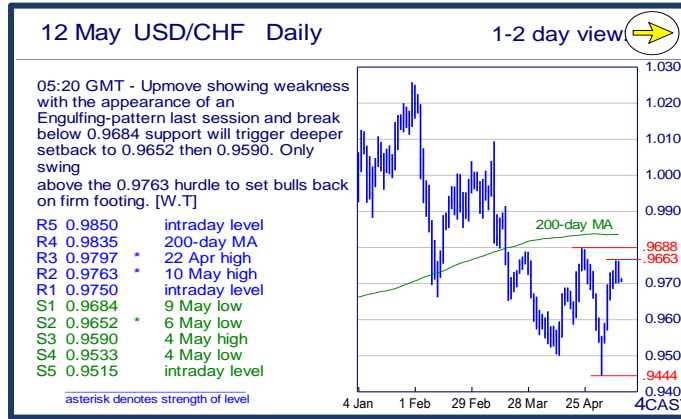
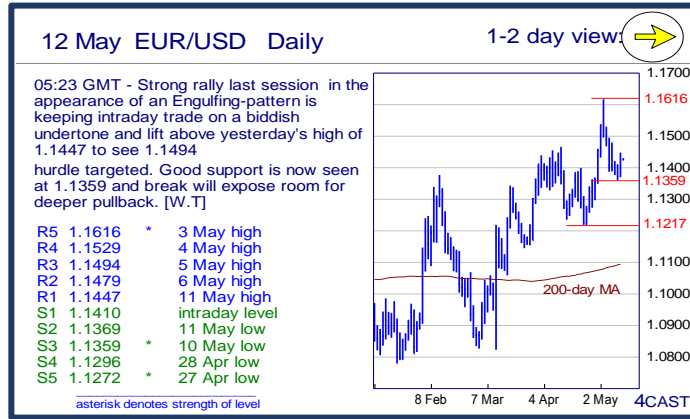


	Trends	Res 4	Res 3	Res 2	Res 1	Spot	Sup 1	Sup 2	Sup 3	Sup 4	MA20	MA50	MA200	RSI 9	
Scandies	EUR/SEK	→	9.4088	9.4015	9.3878	9.3318	9.2929	9.2620	9.2386	9.2090	9.1588	9.2179	9.2451	9.3284	65
	EUR/NOK	→	9.4315	9.3975	9.3860	9.3727	9.3217	9.3024	9.2770	9.2325	9.1915	9.2816	9.3670	9.3857	52
	USD/SEK	→	8.2625	8.2045	8.1847	8.1720	8.1358	8.1156	8.0830	8.0590	8.0342	8.1061	8.1872	8.4092	54
	USD/NOK	↘	8.3200	8.3000	8.2555	8.2430	8.1606	8.1320	8.0950	8.0813	8.0000	8.1616	8.2936	8.4593	47
	EUR/DKK	↘	7.4525~	7.4505	7.4450~	7.4432	7.4403	7.4372	7.4345	7.4290	7.4250	7.4414	7.4478	7.4583	43
	NOK/SEK	↗	1.0137	1.0118	1.0033	0.9993	0.9949	0.9932	0.9896	0.9870	0.9855	0.9915	0.9856	0.9928	59
Majors	EUR/USD	→	1.1529	1.1494	1.1479	1.1447	1.1422	1.1410	1.1369	1.1359	1.1296	1.1368	1.1291	1.1094	56
	USD/JPY	→	110.67	110.00	109.38	108.83/92	108.68	108.23	107.50	107.03	106.44	108.76	110.52	117.50	51
	EUR/GBP	→	.7957	.7994	.7960	.7947	0.7906	.7862	.7822	.7804	.7755	0.7863	0.7878	0.7491	55
	GBP/USD	→	1.4639	1.4572	1.4543	1.4488	1.4442	1.4375	1.4348	1.4300	1.4242	1.4453	1.4329	1.4823	50
	USD/CHF	→	0.9835	0.9797	0.9763	0.9750	0.9703	0.9684	0.9652	0.9590	0.9533	0.9676	0.9700	0.9830	55
	EUR/JPY	→	125.50	124.70	124.44	124.29	124.15	123.52	123.28	122.85	122.30	123.63	124.77	130.30	55
	EUR/CHF	→	1.1200	1.1166	1.1115	1.1109	1.1088	1.1081	1.1051	1.1035	1.1016	1.1004	1.0955	1.0905	68
	AUD/USD	→	.7549	.7517	.7447	.7402	0.7336	.7336	.7300	.7262	.7243	0.7580	0.7571	0.7259	31
	USD/CAD	→	1.3365	1.3014	1.2974	1.2942	1.2855	1.2800	1.2606	1.2458	1.2436	1.2737	1.2961	1.3365	55
	NZD/USD	↗	.6941	.6918	.6860	.6848	0.6827	.6780	.6759	.6716	.6700	0.6892	0.6826	0.6643	46
	EUR/CAD	↗	1.5145	1.5030	1.4965	1.4820	1.4683	1.4520	1.4415	1.4175	1.4035	1.4481	1.4635	1.4823	59
GBP/JPY	→	159.03	158.39	158.07	157.33	156.9500	156.05	155.37	154.27	153.65	157.1935	158.3568	174.3655	51	
EM	USD/CNH	→	6.5867	6.5592	6.5480	6.5393	6.5322	6.5235	6.5170	6.5088	6.5006	6.5027	6.4945	6.4766	64
	USD/ZAR	↗	16.310	16.240	16.000	15.620	15.0475	14.715	14.095	13.885	13.720	14.5977	14.9313	14.6363	63
	USD/BRL	→	3.7930	3.7180	3.6922	3.5160	3.4490	3.4320	3.4280	3.4000	3.3200	3.5186	3.5879	3.7930	37
	USD/MXN	→	18.316	18.250	18.235	18.218	17.979	17.846	17.572	17.277	17.170	17.585	17.576	17.293	64
	EUR/PLN	↗	4.5115	4.5010	4.4720	4.4358	4.4254	4.3700	4.3610	4.3100	4.29~	4.3736	4.3161	4.2952	66
	EUR/CZK	→	27.19~	27.130	27.102	27.093	27.005	26.975~	26.960	26.949	26.914	27.017	27.021	27.036	43
	EUR/HUF	↗	320.25	319.10	318.00	316.20	315.59	315.00	313.10	310.75	309.80	311.92	311.61	312.07	69
	EUR/TRY	→	3.4785	3.4295	3.3455	3.4000	3.3743	3.3000	3.2605	3.2265	3.1960	3.2573	3.2317	3.2390	81
	USD/PLN	→	3.9296	3.9060	3.9000	3.8972	3.8758	3.8239	3.7648	3.7350	3.7056	3.8474	3.8232	3.8739	58
USD/RUB	→	71.60	69.50	67.53	66.38	65.01	64.70	63.95	62.50	62.05	65.78	67.53	68.94	40	
Other Markets	S&P 500 Futures	→	2104	2094	2080	2079	2061	2045	1996	1985	1932	1984	1927	2005	79
	DAX Futures	→	11000	10850	10693	10200	9979	9736	9700	9395	9000	10155	9961	10194	45
	US 10y Futures	→	132-00	131-21	131-09+	131-00	130.26	130-14	129-27	129-15+	129-03	129.84	129.68	127.17	48
	Bund Futures	↗	166.00	165.00	164.95	164.60	164.18	163.50	163.12	162.67	161.90	162.77	162.69	158.02	37
	WTI Oil Futures	→	46.78	46.50	46.22	46.21	46.09	43.71	42.50	41.70	39.07	43.82	40.63	40.07	65

	Trends	Res 4	Res 3	Res 2	Res 1	Spot	Sup 1	Sup 2	Sup 3	Sup 4	MA20	MA 50	MA 200	RSI 9	
Scandies	EUR/SEK	→	9.4088 22 Feb high	9.4015 25 Feb high	9.3878 10 Mar high	9.3318 200-day MA	9.2929	9.2620 9/10 May lows	9.2386 5 May low	9.2090 break-point	9.1588 3 May low	9.2179	9.2451	9.3284	65
	EUR/NOK	→	9.4315 7 Apr low	9.3975 18 Apr high	9.3860 4 May high	9.3727 11 May high	9.3217	9.3024 11 May low	9.2770 5 May low	9.2325 3 May low	9.1915 27 Apr low	9.2816	9.3670	9.3857	52
	USD/SEK	→	8.2625 28 Mar low	8.2045 30 Mar high	8.1847 14 Apr high	8.1720 10 May high	8.1358	8.1156 11 May low	8.0830 6 May low	8.0590 5 May low	8.0342 4 May low	8.1061	8.1872	8.4092	54
	USD/NOK	↘	8.3200 15 Apr high	8.3000 figure	8.2555 22 Apr high	8.2430 10 May high	8.1606	8.1320 11 May low	8.0950 4 May low	8.0813 21 Apr low	8.0000 figure	8.1616	8.2936	8.4593	47
	EUR/DKK	↘	7.4525~ mid-2015 lows	7.4505 20-Apr spike high	7.4450~ end-Apr highs	7.4432 last week high	7.4403	7.4372 6-May low	7.4345 22-Jan-15 low	7.4290 Jan-15/ last yr low	7.4250 Jan-2012 low	7.4414	7.4478	7.4583	43
	NOK/SEK	↗	1.0137 6 Nov high	1.0118 2 Dec high	1.0033 20 Apr high	0.9993 11 May high	0.9949	0.9932 intraday level	0.9896 10 May low	0.9870 3 May low	0.9855 22 Apr low	0.9915	0.9856	0.9928	59
Majors	EUR/USD	→	1.1529 4 May high	1.1494 5 May high	1.1479 6 May high	1.1447 11 May high	1.1422	1.1410 intraday level	1.1369 11 May low	1.1359 10 May low	1.1296 28 Apr low	1.1368	1.1291	1.1094	56
	USD/JPY	→	110.67 26 Apr low	110.00 figure	109.38 11 May high	108.83/92 intraday levels	108.68	108.23 intraday level	107.50 5 May high, break	107.03 9 May low	106.44 6 May low	108.76	110.52	117.50	51
	EUR/GBP	→	.7957 intraday level	.7994 18 Apr high	.7960 intraday level	.7947 4 May high	0.7906	.7862 5 May low	.7822 2 May low	.7804 28 Apr high	.7755 28 Apr low	0.7863	0.7878	0.7491	55
	GBP/USD	→	1.4639 26 Apr high	1.4572 4 May high	1.4543 6 May high	1.4488 11 May high	1.4442	1.4375 9 May low	1.4348 12 Apr high	1.4300 21 Apr low	1.4242 15 Apr high	1.4453	1.4329	1.4823	50
	USD/CHF	→	0.9835 200-day MA	0.9797 22 Apr high	0.9763 10 May high	0.9750 intraday level	0.9703	0.9684 9 May low	0.9652 6 May low	0.9590 4 May high	0.9533 4 May low	0.9676	0.9700	0.9830	55
	EUR/JPY	→	125.50 intraday level	124.70 26 Apr low	124.44 10 May high	124.29 intraday level	124.15	123.52 4 May high, break	123.28 10 May low	122.85 intraday level	122.30 intraday level	123.63	124.77	130.30	55
	EUR/CHF	→	1.1200 4 Feb high	1.1166 29 Jan high	1.1115 4 Feb low	1.1109 11 May high	1.1088	1.1081 11 May low	1.1051 10 May low	1.1035 6 May low	1.1016 22 Apr high	1.1004	1.0955	1.0905	68
	AUD/USD	→	.7549 27 Apr low	.7517 4 May high	.7447 4 May low	.7402 11 May high	0.7336	.7336 11 May low%	.7300 10 May low	.7262 200-day MA line	.7243 4 Feb high	0.7580	0.7571	0.7259	31
	USD/CAD	→	1.3365 200-day MA	1.3014 09 May high	1.2974 50-day MA	1.2942 11 May high	1.2855	1.2800 break level	1.2606 28 Apr high	1.2458 03 May low	1.2436 100-week MA	1.2737	1.2961	1.3365	55
	NZD/USD	↗	.6941 4 May high	.6918 5 May high	.6860 4 May low	.6848 9 May high	0.6827	.6780 intraday level	.6759 11 May low	.6716 10 May low	.6700 50%Jan/Apr up-l	0.6892	0.6826	0.6643	46
	EUR/CAD	↗	1.5145 25-Feb high	1.5030 5-Apr high	1.4965 8-Apr high	1.4820 4-May high	1.4683	1.4520 3-May accel	1.4415 3-May low	1.4175 28-Apr YTD low	1.4035 3-Dec low	1.4481	1.4635	1.4823	59
GBP/JPY	→	159.03 intraday level	158.39 50-day MA line	158.07 29 Apr high	157.33 intraday level	156.95	156.05 10 May low	155.37 intraday level	154.27 9 May low	153.65 6 May low	157.19	158.36	174.37	51	
EM	USD/CNH	→	6.5867 8 Feb high	6.5592 29 Feb high	6.5480 10 May high	6.5393 11 May high	6.5322	6.5235 6 May high	6.5170 25 Apr high	6.5088 6 May low	6.5006 4 May low	6.5027	6.4945	6.4766	64
	USD/ZAR	↗	16.310 26-Feb high	16.240 16-Mar high	16.000 figure	15.620 28-Mar high	15.048	14.715 9-May low	14.095 29-Apr low	13.885 20-Nov-15 low	13.720 4-Nov-15 low	14.598	14.931	14.636	63
	USD/BRL	→	3.7930 200-day MA	3.7180 07 Apr high	3.6922 Nov '15 low	3.5160 10 May high	3.4490	3.4320 02 May low	3.4280 29 Apr low	3.4000 break level	3.3200 Mar '15 high	3.5186	3.5879	3.7930	37
	USD/MXN	→	18.316 29 Feb high	18.250 break level	18.235 projection	18.218 10 May high	17.979	17.846 100-day MA	17.572 50-day MA	17.277 200-day MA	17.170 break level	17.585	17.576	17.293	64
	EUR/PLN	↗	4.5115 21-Jan YTD high	4.5010 26-Jan high	4.4720 9-Feb high	4.4358 6-May high	4.4254	4.3700 20 '15 high	4.3610 2-May low	4.3100 18-Apr high	4.29~ mid-Apr high vol	4.3736	4.3161	4.2952	66
	EUR/CZK	→	27.19~ 1-Oct high	27.130 11-Feb YTD high	27.102 fr 29-Feb highs	27.093 27-Apr high	27.005	26.975~ Mar, Apr lows	26.960 Feb low	26.949 Dec-15/ last year l	26.914 8-Nov-13 low	27.017	27.021	27.036	43
	EUR/HUF	↗	320.25 Jan-15 highs blw s	319.10 12-Jan YTD high	318.00 Jul-15 high	316.20 Mon high	315.59	315.00 30, 31-Mar highs	313.10 29-Apr high, Tues	310.75 2-May low	309.80 last week low	311.92	311.61	312.07	69
	EUR/TRY	→	3.4785 14-Sep high	3.4295 2-Oct high	3.3455 4-May high	3.4000 tod. Intraday high	3.3743	3.3000 figure	3.2605 8-Apr high	3.2265 20-Apr high	3.1960 2-May low	3.2573	3.2317	3.2390	81
	USD/PLN	→	3.9296 25 Apr high	3.9060 100-day MA	3.9000 break level	3.8972 10 May high	3.8758	3.8239 50-day MA	3.7648 20 Apr low	3.7350 break level	3.7056 01 Apr low	3.8474	3.8232	3.8739	58
USD/RUB	→	71.60 Aug '15 high	69.50 Apr high	67.53 50-day MA	66.38 11 May high	65.01	64.70 09 May low	63.95 29-Apr YTD low	62.50 Oct '15 high volum	62.05 Nov '15 low	65.78	67.53	68.94	40	
Other Markets	S&P 500 Futures	→	2104 21 Apr high	2094 27 Apr high	2080 10 May high	2079 11 May high	2061	2045 50-day MA	1996 200-day MA	1985 100-day MA	1932 01 Feb high	1984	1927	2005	79
	DAX Futures	→	11000 figure	10850 break level	10693 gap break	10200 break level	9979	9736 06 May low	9700 break level	9395 10 Mar low	9000 gap break	10155	9961	10194	45
	US 10y Futures	→	132-00 figure	131-21 11 Feb close	131-09+ 07 Apr high	131-00 break level	130.26	130-14 09 May low	129-27 50-day MA	129-15+ 26 Apr high	129-03 100-day MA	129.84	129.68	127.17	48
	Bund Futures	↗	166.00 figure	165.00 figure	164.95 channel top	164.60 11-Apr YTD high	164.18	163.50 09-May low	163.12 03-May high	162.67 04-May low	161.90 03-May low	162.77	162.69	158.02	37
	WTI Oil Futures	→	46.78 29 Apr high	46.50 break level	46.22 break level	46.21 intraday high	46.09	43.71 200-day MA	42.50 26 Apr low	41.70 50-day MA	39.07 100-day MA	43.82	40.63	40.07	65



Strong uptrend



Weak uptrend or higher in range



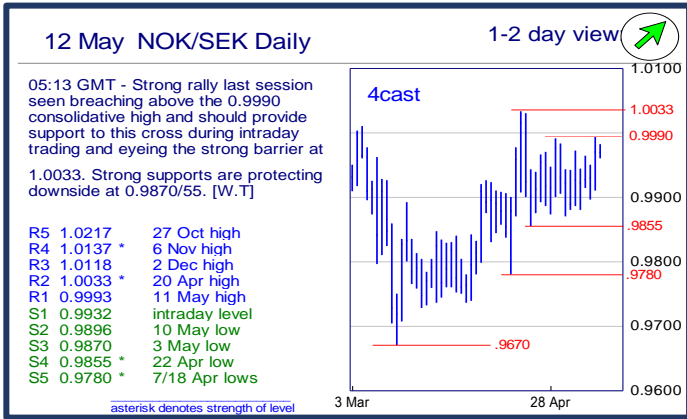
Sideways or in range



Weak downtrend or lower in range

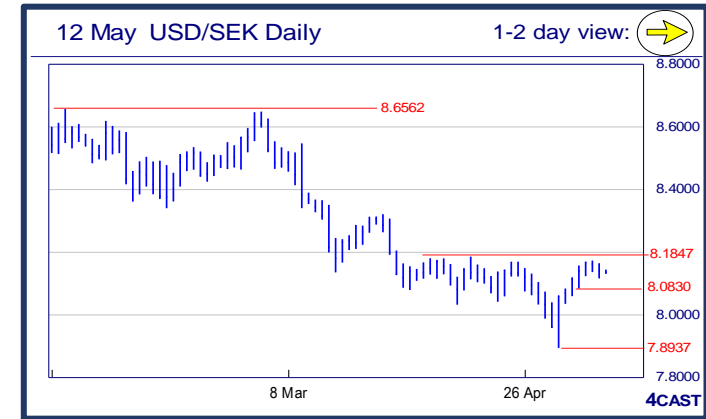
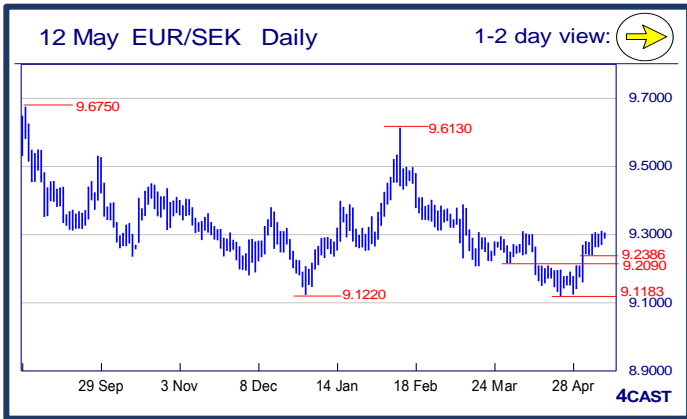


Strong downtrend



### NOK, SEK opening updates

	1 day view	Resistance	Support	4cast
EUR/NOK		9.4315	9.3024	Extending the consolidation seen last one week and need an upside break of 9.3860 resistance to expose a bullish breakout of inverted Head-shoulder pattern. On the downside, slip of 9.3024 support to expose setback to 9.2770. [W.T]
		9.3975	9.2770	
		9.3860	9.2325	
		9.3727	9.1915	
EUR/SEK		9.4088	9.2620	Despite the move above 9.3092 resistance last session, lack of upside momentum is making bulls wary with break of 9.2620 support to trigger a strong reversal towards downside. Only move above 200-day MA line at 9.3318 to garner momentum.
		9.4015	9.2386	
		9.3878	9.2090	
		9.3318	9.1588	
USD/NOK		8.3200	8.1320	Strong decline seen last session with the negative crossing seen on daily Stochastic are exposing a corrective high at 8.2430 with pressure turning down, eyeing lower support at 8.0950 then 7.9700. [W.T]
		8.3000	8.0950	
		8.2555	8.0813	
		8.2430	8.0000	
USD/SEK		8.2625	8.1156	Corrective upmove is slowly losing momentum and setback seen last session is setting tone for deeper pullback. Shorts favoured and slippage below 8.1156 support will expose setback to 8.0830 then 8.0590. [W.T]
		8.2045	8.0830	
		8.1847	8.0590	
		8.1720	8.0342	



Strong uptrend   
 Weak uptrend or higher in range   
 Sideways or in range   
 Weak downtrend or lower in range   
 Strong downtrend