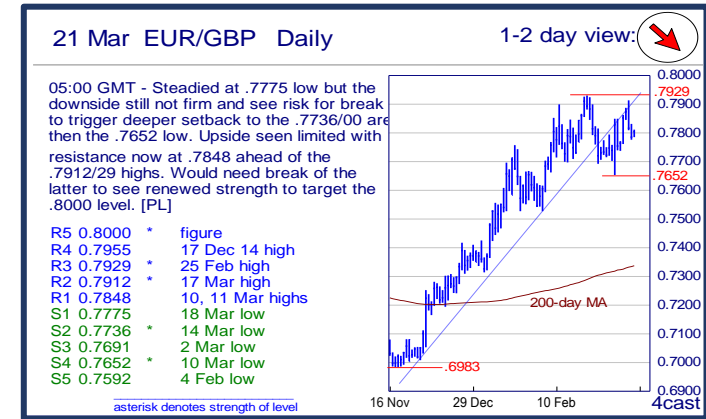
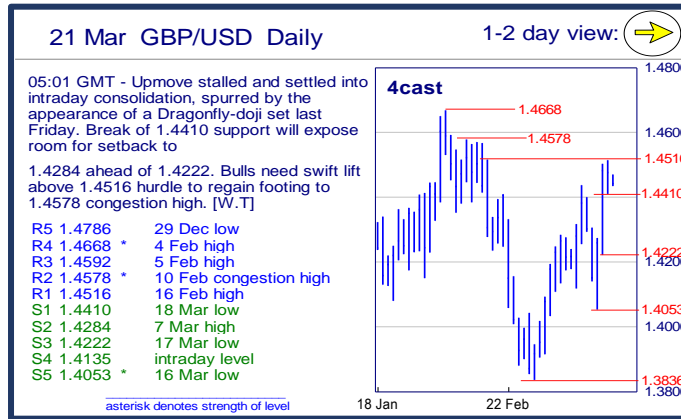
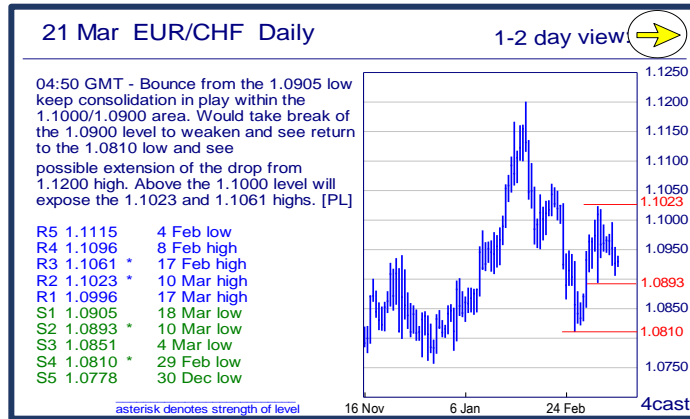
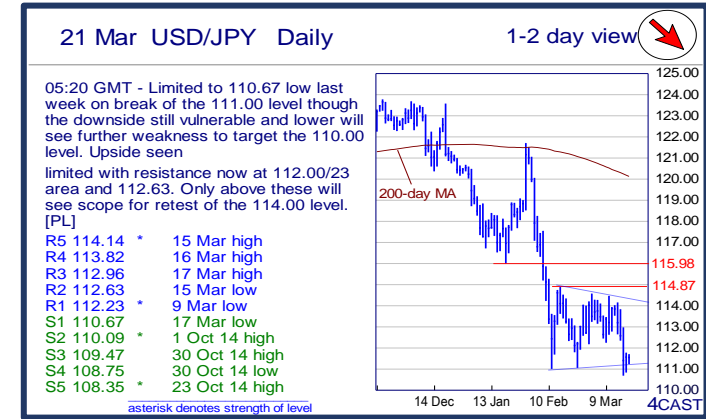
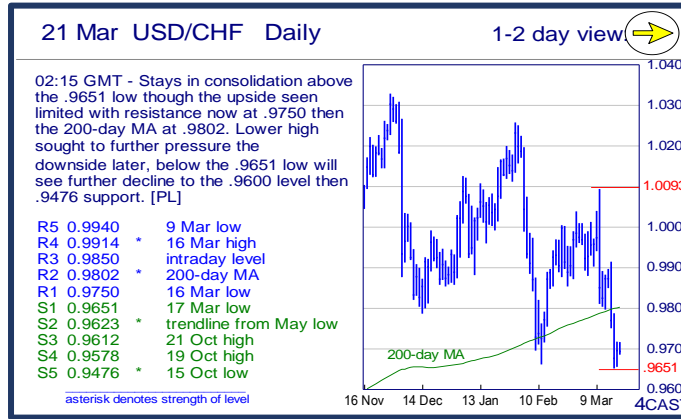
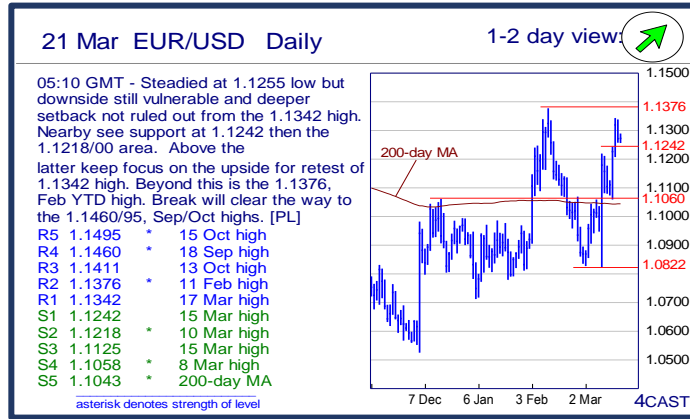
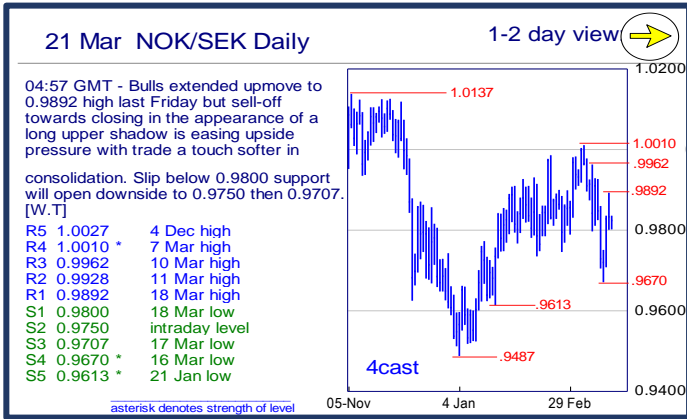


| | Trends | Res 4 | Res 3 | Res 2 | Res 1 | Spot | Sup 1 | Sup 2 | Sup 3 | Sup 4 | MA20 | MA50 | MA200 | RSI 9 | |
|---------------|-----------------|-------|--------|--------|---------|---------|----------|---------|--------|---------|--------|----------|----------|----------|----|
| Scandies | EUR/SEK | → | 9.3878 | 9.3511 | 9.3143 | 9.3066 | 9.2795 | 9.2556 | 9.2060 | 9.1454 | 9.1220 | 9.3137 | 9.3464 | 9.3512 | 45 |
| | EUR/NOK | → | 9.6200 | 9.5710 | 9.5280 | 9.4815 | 9.4471 | 9.3705 | 9.3170 | 9.2765 | 9.2370 | 9.4410 | 9.5121 | 9.2998 | 49 |
| | USD/SEK | ↘ | 8.3890 | 8.3670 | 8.3395 | 8.3030 | 8.2335 | 8.1660 | 8.1347 | 8.0940 | 8.0314 | 8.4227 | 8.4693 | 8.4687 | 29 |
| | USD/NOK | ↘ | 8.5000 | 8.4415 | 8.4245 | 8.4000 | 8.3803 | 8.3025 | 8.2640 | 8.2000 | 8.1735 | 8.5346 | 8.6171 | 8.4214 | 39 |
| | EUR/DKK | ↘ | 7.4662 | 7.4647 | 7.4635~ | 7.4575 | 7.4528 | 7.4520 | 7.4518 | 7.4515 | 7.4472 | 7.4591 | 7.4617 | 7.4614 | 18 |
| | NOK/SEK | → | 1.0010 | 0.9962 | 0.9928 | 0.9892 | 0.9818 | 0.9800 | 0.9750 | 0.9707 | 0.9670 | 0.9853 | 0.9812 | 1.0049 | 49 |
| Majors | EUR/USD | ↗ | 1.1460 | 1.1411 | 1.1376 | 1.1342 | 1.1268 | 1.1242 | 1.1218 | 1.1125 | 1.1058 | 1.1058 | 1.1034 | 1.1041 | 67 |
| | USD/JPY | ↘ | 113.82 | 112.96 | 112.63 | 112.23 | 111.52 | 110.67 | 110.09 | 109.47 | 108.75 | 112.95 | 115.13 | 120.09 | 33 |
| | EUR/GBP | ↘ | .7955 | .7929 | .7912 | .7848 | 0.7803 | .7775 | .7736 | .7691 | .7652 | 0.7798 | 0.7721 | 0.7334 | 52 |
| | GBP/USD | → | 1.4668 | 1.4592 | 1.4578 | 1.4516 | 1.4438 | 1.4410 | 1.4284 | 1.4222 | 1.4135 | 1.4179 | 1.4288 | 1.5066 | 61 |
| | USD/CHF | → | 0.9914 | 0.9850 | 0.9802 | 0.9750 | 0.9694 | 0.9651 | 0.9623 | 0.9612 | 0.9578 | 0.9877 | 0.9947 | 0.9799 | 28 |
| | EUR/JPY | → | 129.05 | 128.17 | 127.29 | 126.62 | 125.67 | 125.10 | 124.89 | 123.65 | 123.06 | 124.91 | 127.02 | 132.58 | 50 |
| | EUR/CHF | → | 1.1096 | 1.1061 | 1.1023 | 1.0996 | 1.0928 | 1.0905 | 1.0893 | 1.0851 | 1.0810 | 1.0924 | 1.0978 | 1.0819 | 44 |
| | AUD/USD | → | .7772 | .7739 | .7680 | .7657 | 0.7583 | .7576 | .7528 | .7485 | .7445 | 0.7395 | 0.7190 | 0.7240 | 65 |
| | USD/CAD | ↘ | 1.3793 | 1.3671 | 1.3326 | 1.3120 | 1.3058 | 1.2941 | 1.2900 | 1.2835 | 1.2500 | 1.3341 | 1.3766 | 1.3336 | 35 |
| | NZD/USD | → | .6924 | .6897 | .6883 | .6828 | 0.6765 | .6752 | .6721 | .6650 | .6619 | 0.6702 | 0.6616 | 0.6613 | 55 |
| | EUR/CAD | ↘ | 1.5265 | 1.5145 | 1.5015 | 1.4875 | 1.4717 | 1.4525 | 1.4380 | 1.4225 | 1.4035 | 1.4754 | 1.5190 | 1.4721 | 46 |
| | GBP/JPY | → | 164.10 | 163.41 | 162.95 | 161.79 | 161.0200 | 160.36 | 159.02 | 158.74 | 158.56 | 160.1505 | 164.5260 | 181.0863 | 48 |
| EM | USD/CNH | ↘ | 6.5255 | 6.5159 | 6.4988 | 6.4866 | 6.4796 | 6.4443 | 6.4161 | 6.4020 | 6.4023 | 6.5100 | 6.5482 | 6.4227 | 41 |
| | USD/ZAR | ↘ | 16.440 | 16.310 | 16.240 | 15.750 | 15.3258 | 15.025 | 14.790 | 14.490 | 14.240 | 15.4908 | 15.8727 | 14.1841 | 46 |
| | USD/BRL | ↘ | 3.9280 | 3.8900 | 3.8380 | 3.7220 | 3.6240 | 3.6020 | 3.6000 | 3.5710 | 3.5000 | 3.7854 | 3.9190 | 3.7277 | 34 |
| | USD/MXN | ↘ | 18.394 | 18.198 | 17.952 | 17.561 | 17.456 | 17.250 | 17.230 | 17.155 | 17.000 | 17.832 | 18.187 | 16.969 | 36 |
| | EUR/PLN | ↘ | 4.3770 | 4.3700 | 4.3455 | 4.3120 | 4.2601 | 4.2600 | 4.2535 | 4.2240 | 4.2045 | 4.3180 | 4.3800 | 4.2639 | 29 |
| | EUR/CZK | → | 27.19~ | 27.140 | 27.131 | 27.08~ | 27.001 | 27.00-3 | 26.960 | 26.949 | 26.914 | 27.028 | 27.021 | 27.054 | 42 |
| | EUR/HUF | ↗ | 316.35 | 314.65 | 312.95~ | 311.50~ | 309.51 | 308.45 | 307.30 | 306.72 | 306.48 | 309.77 | 310.96 | 311.89 | 47 |
| | EUR/TRY | → | 3.3420 | 3.3145 | 3.2830 | 3.2705 | 3.2296 | 3.1640 | 3.1380 | 3.1175 | 3.0775 | 3.2131 | 3.2528 | 3.1914 | 54 |
| | USD/PLN | ↘ | 3.9745 | 3.9630 | 3.8925 | 3.8610 | 3.7850 | 3.7667 | 3.7500 | 3.7380 | 3.6787 | 3.9066 | 3.9715 | 3.8641 | 21 |
| | USD/RUB | ↘ | 76.40 | 75.53 | 74.50~ | 71.88 | 68.10 | 67.27 | 66.83 | 66.05 | 64.06 | 72.10 | 75.60 | 67.14 | 29 |
| Other Markets | S&P 500 Futures | → | 2068 | 2050 | 2044 | 2042 | 2034 | 2011 | 1998 | 1939 | 1877 | 1984 | 1927 | 2005 | 79 |
| | DAX Futures | → | 11000 | 10693 | 10165 | 10120 | 9901 | 9395 | 9000 | 8690 | 8350 | 9686 | 9562 | 10418 | 58 |
| | US 10y Futures | ↗ | 131-14 | 130-27 | 129-26 | 129-17 | 129.26 | 129-05 | 128-16 | 128-01+ | 128-00 | 129.85 | 129.68 | 127.17 | 53 |
| | Bund Futures | → | 165.00 | 164.00 | 163.40 | 163.00~ | 162.44 | 161.80 | 160.81 | 160.40 | 160.02 | 162.77 | 162.69 | 158.02 | 37 |
| | WTI Oil Futures | ↗ | 43.50 | 42.00 | 41.80 | 41.20 | 38.88 | 38.62 | 36.28 | 33.87 | 28.74 | 36.14 | 33.86 | 45.43 | 61 |

| | Trends | Res 4 | Res 3 | Res 2 | Res 1 | Spot | Sup 1 | Sup 2 | Sup 3 | Sup 4 | MA20 | MA 50 | MA 200 | RSI 9 | |
|---------------|-----------------|-------|------------------------|---------------------------|--------------------------|--------------------------|--------|---------------------------|--------------------------|----------------------------|------------------------|--------|--------|--------|----|
| Scandies | EUR/SEK | → | 9.3878 10 Mar high | 9.3511 200-day MA | 9.3143 14 Mar high | 9.3066 17 Mar high | 9.2795 | 9.2556 18 Mar low | 9.2060 16/17 Mar low | 9.1454 4 Jan low | 9.1220 30 Dec low | 9.3137 | 9.3464 | 9.3512 | 45 |
| | EUR/NOK | → | 9.6200 24 Feb high | 9.5710 10 Mar high | 9.5280 16 Mar high | 9.4815 16 Mar low | 9.4471 | 9.3705 18 Mar low | 9.3170 7 Mar low | 9.2765 10 Mar low | 9.2370 4 Dec low | 9.4410 | 9.5121 | 9.2998 | 49 |
| | USD/SEK | ↘ | 8.3890 11 Mar high | 8.3670 14 Mar high | 8.3395 11 Feb low | 8.3030 15 Mar low | 8.2335 | 8.1660 18 Mar low | 8.1347 17 Mar low | 8.0940 14 Oct low | 8.0314 18 Jun low | 8.4227 | 8.4693 | 8.4687 | 29 |
| | USD/NOK | ↘ | 8.5000 figure | 8.4415 16 Mar low | 8.4245 200-day MA | 8.4000 figure | 8.3803 | 8.3025 18 May low | 8.2640 23 Oct low | 8.2000 figure | 8.1735 22 Oct low | 8.5346 | 8.6171 | 8.4214 | 39 |
| | EUR/DKK | ↘ | 7.4662 16-Feb YTD high | 7.4647 24-Feb high | 7.4635~ 7-9-Mar highs | 7.4575 Thurs high | 7.4528 | 7.4520 Thurs low | 7.4518 Jul-15 low | 7.4515 May-15 low | 7.4472 mid-Mar-15 low | 7.4591 | 7.4617 | 7.4614 | 18 |
| | NOK/SEK | → | 1.0010 7 Mar high | 0.9962 10 Mar high | 0.9928 11 Mar high | 0.9892 18 Mar high | 0.9818 | 0.9800 18 Mar low | 0.9750 intraday level | 0.9707 17 Mar low | 0.9670 16 Mar low | 0.9853 | 0.9812 | 1.0049 | 49 |
| Majors | EUR/USD | ↗ | 1.1460 18 Sep high | 1.1411 13 Oct high | 1.1376 11 Feb high | 1.1342 17 Mar high | 1.1268 | 1.1242 15 Mar high | 1.1218 10 Mar high | 1.1125 15 Mar high | 1.1058 8 Mar high | 1.1058 | 1.1034 | 1.1041 | 67 |
| | USD/JPY | ↘ | 113.82 16 Mar high | 112.96 17 Mar high | 112.63 15 Mar low | 112.23 9 Mar low | 111.52 | 110.67 17 Mar low | 110.09 1 Oct 14 high | 109.47 30 Oct 14 high | 108.75 30 Oct 14 low | 112.95 | 115.13 | 120.09 | 33 |
| | EUR/GBP | ↘ | .7955 17 Dec 14 high | .7929 25 Feb high | .7912 17 Mar high | .7848 10, 11 Mar highs | 0.7803 | .7775 18 Mar low | .7736 14 Mar low | .7691 2 Mar low | .7652 10 Mar low | 0.7798 | 0.7721 | 0.7334 | 52 |
| | GBP/USD | → | 1.4668 4 Feb high | 1.4592 5 Feb high | 1.4578 10 Feb congestion | 1.4516 16 Feb high | 1.4438 | 1.4410 18 Mar low | 1.4284 7 Mar high | 1.4222 17 Mar low | 1.4135 intraday level | 1.4179 | 1.4288 | 1.5066 | 61 |
| | USD/CHF | → | 0.9914 16 Mar high | 0.9850 intraday level | 0.9802 200-day MA | 0.9750 16 Mar low | 0.9694 | 0.9651 17 Mar low | 0.9623 trendline from Ma | 0.9612 21 Oct high | 0.9578 19 Oct high | 0.9877 | 0.9947 | 0.9799 | 28 |
| | EUR/JPY | → | 129.05 50%Jan/Feb dow | 128.17 16 Feb high | 127.29 11 Mar high | 126.62 17 Mar high | 125.67 | 125.10 15 Mar low | 124.89 9 Mar high | 123.65 10 Mar low | 123.06 9 Mar low | 124.91 | 127.02 | 132.58 | 50 |
| | EUR/CHF | → | 1.1096 8 Feb high | 1.1061 17 Feb high | 1.1023 10 Mar high | 1.0996 17 Mar high | 1.0928 | 1.0905 18 Mar low | 1.0893 10 Mar low | 1.0851 4 Mar low | 1.0810 29 Feb low | 1.0924 | 1.0978 | 1.0819 | 44 |
| | AUD/USD | → | .7772 24 Jun high | .7739 1 Jul high | .7680 18 Mar high | .7657 17 Mar high | 0.7583 | .7576 intraday level | .7528 9 Mar high, conge | .7485 7 Mar high | .7445 15 Mar low | 0.7395 | 0.7190 | 0.7240 | 65 |
| | USD/CAD | ↘ | 1.3793 50-day MA | 1.3671 100-day MA | 1.3326 200-day MA | 1.3120 50-week MA | 1.3058 | 1.2941 17 Mar low | 1.2900 figure | 1.2835 Mar '15 high | 1.2500 break level | 1.3341 | 1.3766 | 1.3336 | 35 |
| | NZD/USD | → | .6924 25 Jun high | .6897 15 Oct high | .6883 29 Dec high | .6828 intraday level | 0.6765 | .6752 5 Feb high | .6721 17 Mar low | .6650 intraday level | .6619 10 Mar low, 200- | 0.6702 | 0.6616 | 0.6613 | 55 |
| | EUR/CAD | ↘ | 1.5265 24-Feb high | 1.5145 25-Feb high | 1.5015 10-Mar high | 1.4875 15-Mar high | 1.4717 | 1.4525 1-Mar low | 1.4380 10-Mar low | 1.4225 1-Dec high | 1.4035 3-Dec low | 1.4754 | 1.5190 | 1.4721 | 46 |
| | GBP/JPY | → | 164.10 11/14 Mar highs | 163.41 intraday level | 162.95 15 Mar high | 161.79 18 Mar high | 161.02 | 160.36 18 Mar low | 159.02 17 Mar low | 158.74 2 Mar low | 158.56 26 Feb high | 160.15 | 164.53 | 181.09 | 48 |
| EM | USD/CNH | ↘ | 6.5255 16 Mar high | 6.5159 100-day MA line | 6.4988 17 Mar high | 6.4866 15 Feb low | 6.4796 | 6.4443 18 Mar low | 6.4161 30 Nov low | 6.4020 61.8%of 6.1863-6 | 6.4023 18 Nov low | 6.5100 | 6.5482 | 6.4227 | 41 |
| | USD/ZAR | ↘ | 16.440 3-Feb high | 16.310 26-Feb high | 16.240 16-Mar high | 15.750 17-Mar high | 15.326 | 15.025 10-Mar low | 14.790 16-Dec low | 14.490 30-Nov high | 14.240 3-Dec low | 15.491 | 15.873 | 14.184 | 46 |
| | USD/BRL | ↘ | 3.9280 50-day MA | 3.8900 100-day MA | 3.8380 29 Dec low | 3.7220 200-day MA | 3.6240 | 3.6020 17 Mar low | 3.6000 50-week MA | 3.5710 11 Mar low | 3.5000 H&S target | 3.7854 | 3.9190 | 3.7277 | 34 |
| | USD/MXN | ↘ | 18.394 18 Feb high | 18.198 50-day MA | 17.952 17 Feb low | 17.561 100-day MA | 17.456 | 17.250 break level | 17.230 intraday low | 17.155 projection | 17.000 figure | 17.832 | 18.187 | 16.969 | 36 |
| | EUR/PLN | ↘ | 4.3770 29-Feb high | 4.3700 20 15 high, st-Feb | 4.3455 10-Mar high | 4.3120 2-Mar low, Thur a | 4.2601 | 4.2600 1-Jan high/ gap lo | 4.2535 1-Jan YTD low | 4.2240 30-Dec-15 low | 4.2045 11-Nov-15 low | 4.3180 | 4.3800 | 4.2639 | 29 |
| | EUR/CZK | → | 27.19~ 1-Oct high | 27.140 Oct high | 27.131 11-Feb YTD high | 27.08~ fr 26-Feb highs | 27.001 | 27.00-3 Nov-Feb high vol | 26.960 Feb low | 26.949 Dec-15/ last year l | 26.914 8-Nov-13 low | 27.028 | 27.021 | 27.054 | 42 |
| | EUR/HUF | ↗ | 316.35 20-Jan high | 314.65 28-Jan high | 312.95~ 9 & 11-Feb highs | 311.50~ fr mid-Feb highs | 309.51 | 308.45 10-Mar low | 307.30 4-Mar low | 306.72 start Aug-15 lows | 306.48 22-Feb YTD low | 309.77 | 310.96 | 311.89 | 47 |
| | EUR/TRY | → | 3.3420 11-Feb high | 3.3145 19-Feb high | 3.2830 22-Feb high | 3.2705 29-Feb high | 3.2296 | 3.1640 3-Mar low | 3.1380 18-Dec low | 3.1175 10-Mar low | 3.0775 2-Dec high | 3.2131 | 3.2528 | 3.1914 | 54 |
| | USD/PLN | ↘ | 3.9745 50-day MA | 3.9630 100-day MA | 3.8925 16 Mar high | 3.8610 200-day MA | 3.7850 | 3.7667 17 Mar low | 3.7500 projection | 3.7380 break level | 3.6787 Oct '15 low | 3.9066 | 3.9715 | 3.8641 | 21 |
| | USD/RUB | ↘ | 76.40 end-Feb highs | 75.53 50-day MA | 74.50~ Jan-Feb lows | 71.88 100-day MA | 68.10 | 67.27 18 Mar low | 66.83 200-day MA | 66.05 Dec '15 low | 64.06 50-week MA | 72.10 | 75.60 | 67.14 | 29 |
| Other Markets | S&P 500 Futures | → | 2068 30 Dec high | 2050 break level | 2044 projection | 2042 intraday high | 2034 | 2011 50-week MA | 1998 200-day MA | 1939 13 Jan high | 1877 24 Feb low | 1984 | 1927 | 2005 | 79 |
| | DAX Futures | → | 11000 figure | 10693 gap break | 10165 13 Jan high | 10120 break level | 9901 | 9395 10 Mar low | 9000 gap break | 8690 11 Feb low | 8350 early-Oct '14 low | 9686 | 9562 | 10418 | 58 |
| | US 10y Futures | ↗ | 131-14 24 Feb high | 130-27 01 Mar high | 129-26 17 Feb low | 129-17 17 Mar high | 129.26 | 129-05 50-day MA | 128-16 break level | 128-01+ 16 Mar low | 128-00 figure | 129.85 | 129.68 | 127.17 | 53 |
| | Bund Futures | → | 165.00 ABC move | 164.00 29-Feb high | 163.40 10-Mar high | 163.00~ Down trendline | 162.44 | 161.80 16-Mar high, gap | 160.81 10-Mar low | 160.40 1-Feb low | 160.02 29-Jan low, gap | 162.77 | 162.69 | 158.02 | 37 |
| | WTI Oil Futures | ↗ | 43.50 projection | 42.00 figure | 41.80 figure | 41.20 intraday high | 38.88 | 38.62 100-day MA | 36.28 28 Jan high | 33.87 50-day MA | 28.74 11 Feb low | 36.14 | 33.86 | 45.43 | 61 |

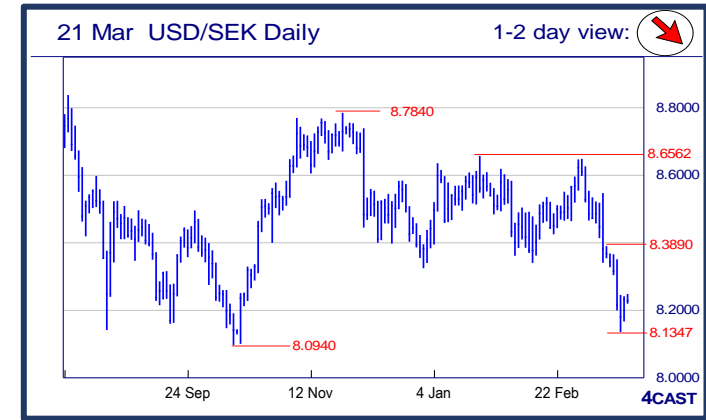
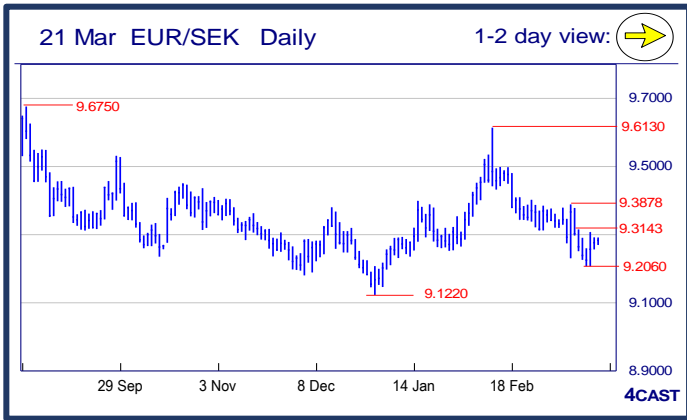


Strong uptrend Weak uptrend or higher in range Sideways or in range Weak downtrend or lower in range Strong downtrend



NOK, SEK opening updates

| | 1 day view | Resistance | Support | 4cast |
|---------|------------|------------|---------|--|
| EUR/NOK | | 9.6200 | 9.3705 | Break below the 9.4000 level see the downside checked at 9.3705 low which keep 9.3170 and 9.2765 lows out of reach. Consolidation stays in play with resistance now at 9.4815 and lift over this needed to expose 9.5280 and 9.5710 highs. [P.L] |
| | | 9.5710 | 9.3170 | |
| | | 9.5280 | 9.2765 | |
| | | 9.4815 | 9.2370 | |
| EUR/SEK | | 9.3878 | 9.2556 | Trade still in recovery mode and have to push above the 9.3143 resistance to garner stronger momentum towards 9.3878 hurdle. Dip below last Friday's low of 9.2556 will turn current recovery around and shift focus twds last week's low of 9.2060. [W.T] |
| | | 9.3511 | 9.2060 | |
| | | 9.3143 | 9.1454 | |
| | | 9.3066 | 9.1220 | |
| USD/NOK | | 8.5000 | 8.3025 | Staging recovery from the 8.3025 low to retest the 8.4000 level and lift over this will see room for stronger recovery to the 200-day MA at 8.4245 and 8.4415. Lower high sought to further pressure the downside later. [P.L] |
| | | 8.4415 | 8.2640 | |
| | | 8.4245 | 8.2000 | |
| | | 8.4000 | 8.1735 | |
| USD/SEK | | 8.3890 | 8.1660 | Oversold posture seen on daily tools spurring current recovery mode but with the dominant downmove from 8.6476 high still intact, selling into upticks still favoured. Drop below 8.1347 support signals bears back in control. [W.T] |
| | | 8.3670 | 8.1347 | |
| | | 8.3395 | 8.0940 | |
| | | 8.3030 | 8.0314 | |



Strong uptrend
 Weak uptrend or higher in range
 Sideways or in range
 Weak downtrend or lower in range
 Strong downtrend

Copyright and other intellectual property rights in the material in this document belong to 4CAST Limited and/or 4CAST Inc (4CAST). The material shall not, under any circumstances, be reproduced or distributed in whole or part without the prior written consent of 4CAST. The material in this document is based upon information which 4CAST considers to be reliable and the analysis and opinion in the material represents the view of 4CAST at the time of transmission (unless stated otherwise). Such analysis and opinion is subject to change without notice. The material is intended for use by parties knowledgeable and experienced in the financial sector and is only one source amongst others to be considered in carrying on their business or activity. ACCORDINGLY 4CAST MAKES NO REPRESENTATION OR WARRANTY EXPRESS OR IMPLIED STATUTORY OR OTHERWISE (INCLUDING BUT NOT LIMITED TO) THE ACCURACY OF THE MATERIAL IN THIS DOCUMENT OR THE FITNESS FOR PURPOSE AND ALL SUCH REPRESENTATIONS AND WARRANTIES ARE HEREBY EXPRESSLY EXCLUDED. 4CAST does not give or purport to give investment advice. Any action taken by users on the basis of material in this document is entirely at their own risk. Independent investment advice should be sought where appropriate. 4CAST website may link to or be linked to other Internet sites. 4CAST does not accept responsibility for the content of such other sites. 4CAST's terms and conditions of business apply to all fee-paying subscribers and trial users.