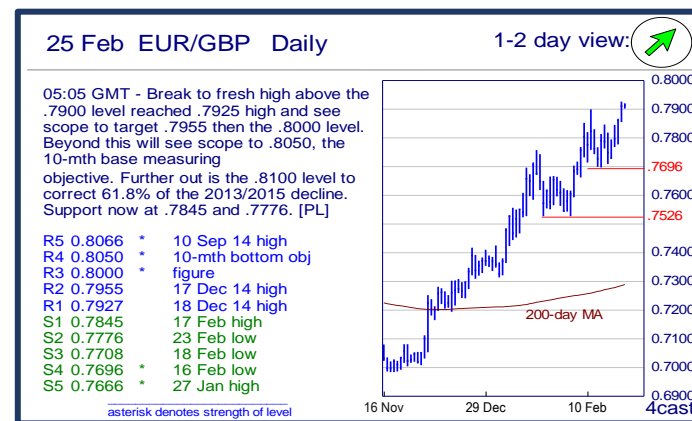
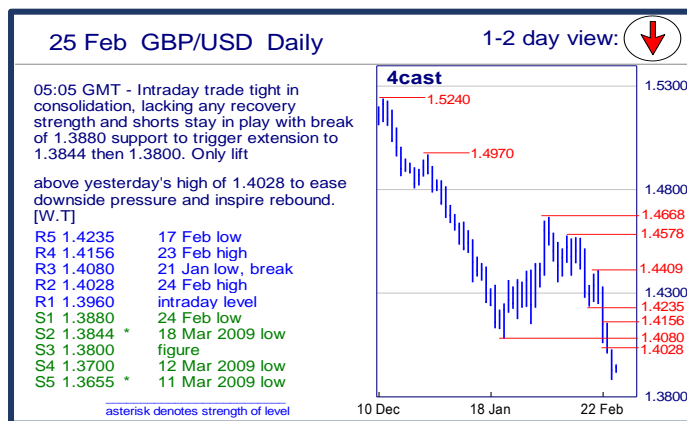
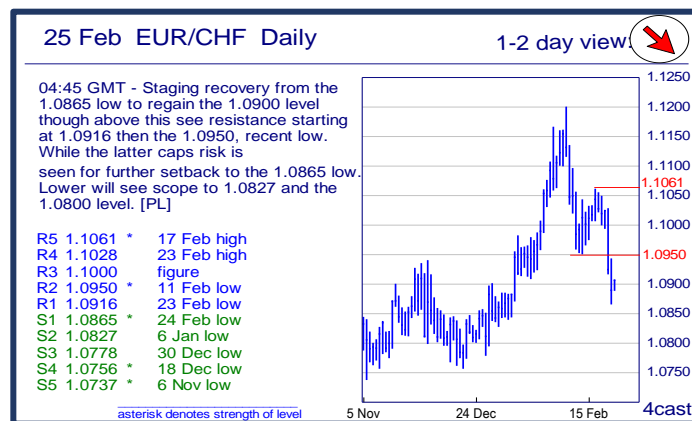
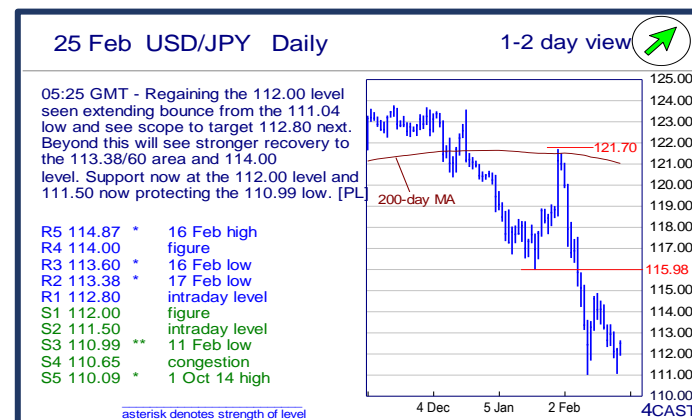
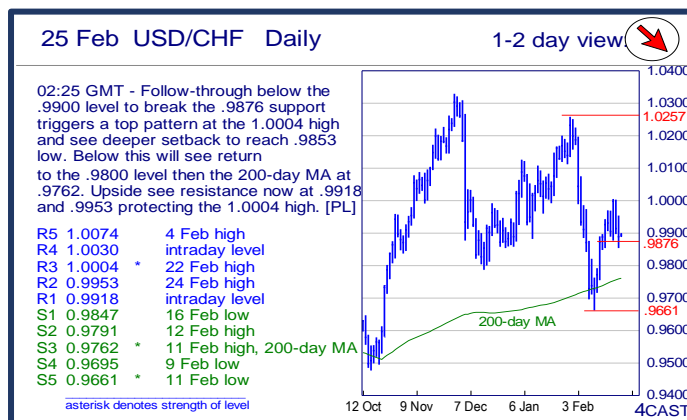
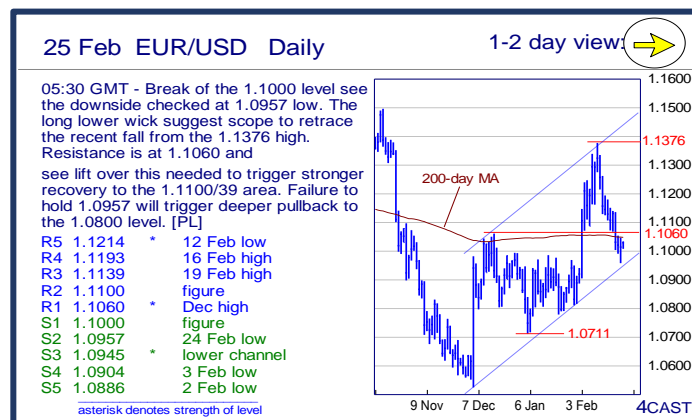


		Trends	Res 4	Res 3	Res 2	Res 1	Spot	Sup 1	Sup 2	Sup 3	Sup 4	MA20	MA50	MA200	RSI 9
Scandies	EUR/SEK	↘	9.4797	9.4312	9.4088	9.3870	9.3488	9.3250	9.2844	9.2514	9.2304	9.4074	9.3183	9.3507	40
	EUR/NOK	→	9.7480	9.7000	9.6475	9.6200	9.5503	9.5100	9.4430	9.4210	9.3780	9.5580	9.5695	9.2345	50
	USD/SEK	→	8.5825	8.5502	8.5187	8.4970	8.4781	8.4644	8.4422	8.4242	8.4086	8.4659	8.4877	8.4644	51
	USD/NOK	↗	8.8335	8.7925	8.7610	8.7000	8.6600	8.6570	8.6000	8.5805	8.5335	8.5996	8.7151	8.3589	57
	EUR/DKK	↘	7.47~	7.4685	7.4665	7.4662	7.4626	7.4600	7.4570	7.4568	7.4545	7.4635	7.4629	7.4615	44
	NOK/SEK	→	0.9960	0.9920	0.9899	0.9810	0.9783	0.9734	0.9613	0.9600	0.9517	0.9828	0.9724	1.0123	45
Majors	EUR/USD	→	1.1193	1.1139	1.1100	1.1060	1.1027	1.1000	1.0957	1.0945	1.0904	1.1110	1.0976	1.1046	42
	USD/JPY	↗	114.00	113.60	113.38	112.80	112.49	112.00	111.50	110.99	110.65	115.07	117.42	120.99	34
	EUR/GBP	↗	.8050	.8000	.7955	.7927	0.7912	.7845	.7776	.7708	.7696	0.7742	0.7583	0.7286	72
	GBP/USD	↘	1.4156	1.4080	1.4028	1.3960	1.3933	1.3880	1.3844	1.3800	1.3700	1.4348	1.4474	1.5166	25
	USD/CHF	↘	1.0030	1.0004	0.9953	0.9918	0.9889	0.9847	0.9791	0.9762	0.9695	0.9923	0.9972	0.9757	46
	EUR/JPY	→	126.62	126.10	125.00	124.24	124.04	123.00	122.46	121.95	121.00	127.83	128.85	133.64	25
	EUR/CHF	↘	1.1028	1.1000	1.0950	1.0916	1.0905	1.0865	1.0827	1.0778	1.0756	1.1025	1.0948	1.0776	32
	AUD/USD	→	.7328	.7305	.7268	.7259	0.7182	.7146	.7100	.7069	.7046	0.7132	0.7105	0.7265	58
	USD/CAD	→	1.4015	1.4003	1.3910	1.3846	1.3707	1.3690	1.3640	1.3628	1.3600	1.3832	1.3996	1.3261	39
	NZD/USD	→	.6752	.6739	.6726	.6680	0.6661	.6587	.6565	.6545	.6509	0.6629	0.6629	0.6650	55
	EUR/CAD	↘	1.5975	1.5910	1.5530	1.5390	1.5120	1.4955	1.4800	1.4675	1.4500	1.5371	1.5361	1.4643	38
	GBP/JPY	→	159.14	158.88	158.47	157.32	156.7500	155.02	154.73	154.15	153.58	165.1445	170.0132	183.6063	22
EM	USD/CNH	→	6.5668	6.5578	6.5504	6.5436	6.5368	6.5256	6.5164	6.4988	6.4866	6.5512	6.5761	6.3972	46
	USD/ZAR	→	16.650	16.440	16.270	15.870	15.6098	15.445	15.055	14.790	14.490	15.7440	15.8913	13.9085	47
	USD/BRL	↘	4.1230	4.0950	4.0730	4.0220	3.9566	3.9290	3.9040	3.8000	3.7700	3.9626	3.9943	3.6745	45
	USD/MXN	↘	19.440	19.000	18.620	18.394	18.191	18.165	18.025	17.952	17.465	18.468	18.050	16.770	41
	EUR/PLN	→	4.5235	4.50~	4.4720	4.4175	4.3706	4.3695	4.3540	4.3285	4.2680	4.3996	4.3700	4.2494	40
	EUR/CZK	→	27.19~	27.140	27.131	27.087	27.038	26.960	26.949	26.914	25.710	27.022	27.017	27.084	57
	EUR/HUF	↘	318.00	316.35	313.00	311.85	309.51	306.70	306.48	304.40	301.90	309.91	312.46	311.93	48
	EUR/TRY	↘	3.3760	3.3545	3.3420	3.3145	3.2417	3.1980	3.1635	3.1380	3.1175	3.2663	3.2513	3.1730	41
	USD/PLN	→	4.0481	4.0000	3.9825	3.9800	3.9626	3.9422	3.8881	3.8590	3.8454	3.9614	3.9827	3.8493	49
	USD/RUB	↘	85.95	82.25	80.63	78.56	76.20	73.87	72.32	71.70	70.33	77.29	76.01	65.63	46
Other Markets	S&P 500 Futures	→	1983	1953	1947	1938	1930	1881	1860	1804	1800	1896	1938	2013	59
	DAX Futures	→	9923	9800	9620	9586	9149	9122	9000	8690	8350	9303	9798	10572	43
	US 10y Futures	→	133-01+	132-16	132-00	131-25+	131.00	130-31+	130-06	130-00	129-08	130.63	128.51	126.83	60
	Bund Futures	↗	168.00	167.00	166.50	166.25	165.97	164.75	163.72	162.70	161.55	159.09	161.21	157.66	51
	WTI Oil Futures	→	34.56	34.21	34.00	33.53	31.48	30.56	30.00	29.78	28.74	30.48	33.59	47.35	56

		Trends	Res 4	Res 3	Res 2	Res 1	Spot	Sup 1	Sup 2	Sup 3	Sup 4	MA20	MA 50	MA 200	RSI 9
Scandies	EUR/SEK	↘	9.4797 18 Feb high	9.4312 12 Feb low	9.4088 22 Feb high	9.3870 24 Feb high	9.3488	9.3250 3 Feb low	9.2844 2 Feb low	9.2514 27 Jan low	9.2304 8 Jan low	9.4074	9.3183	9.3507	40
	EUR/NOK	→	9.7480 11Feb high	9.7000 figure	9.6475 17 Feb high	9.6200 24 Feb high	9.5503	9.5100 23 Feb high	9.4430 23 Feb low	9.4210 25 Jan low	9.3780 29 Jan low	9.5580	9.5695	9.2345	50
	USD/SEK	→	8.5825 3 Feb high	8.5502 24 Feb high	8.5187 intraday level	8.4970 intraday level	8.4781	8.4644 24 Feb low	8.4422 22 Feb low	8.4242 19 Feb low	8.4086 15 Feb low	8.4659	8.4877	8.4644	51
	USD/NOK	↗	8.8335 17 Dec high	8.7925 25Jan high	8.7610 24 Feb high	8.7000 figure	8.6600	8.6570 15 Feb high	8.6000 figure	8.5805 23 Feb low	8.5335 18 Feb low	8.5996	8.7151	8.3589	57
	EUR/DKK	↘	7.47~ early Apr lows	7.4685 May-15 high	7.4665 24-Dec high	7.4662 16-Feb YTD high	7.4626	7.4600 23-Feb low	7.4570 7-Jan low	7.4568 Dec-15 low	7.4545 Oct-15 low	7.4635	7.4629	7.4615	44
	NOK/SEK	→	0.9960 intraday level	0.9920 intraday level	0.9899 23 Feb high	0.9810 19 Feb low	0.9783	0.9734 11Feb low	0.9613 21Jan low	0.9600 figure	0.9517 7 Jan low	0.9828	0.9724	1.0123	45
Majors	EUR/USD	→	1.1193 16 Feb high	1.1139 19 Feb high	1.1100 figure	1.1060 Dec high	1.1027	1.1000 figure	1.0957 24 Feb low	1.0945 lower channel	1.0904 3 Feb low	1.1110	1.0976	1.1046	42
	USD/JPY	↗	114.00 figure	113.60 16 Feb low	113.38 17 Feb low	112.80 intraday level	112.49	112.00 figure	111.50 intraday level	110.99 11Feb low	110.65 congestion	115.07	117.42	120.99	34
	EUR/GBP	↗	.8050 10-mth bottom ob	.8000 figure	.7955 17 Dec 14 high	.7927 18 Dec 14 high	0.7912	.7845 17 Feb high	.7776 23 Feb low	.7708 18 Feb low	.7696 16 Feb low	0.7742	0.7583	0.7286	72
	GBP/USD	↘	1.4156 23 Feb high	1.4080 21Jan low, break	1.4028 24 Feb high	1.3960 intraday level	1.3933	1.3880 24 Feb low	1.3844 18 Mar 2009 low	1.3800 figure	1.3700 12 Mar 2009 low	1.4348	1.4474	1.5166	25
	USD/CHF	↘	1.0030 intraday level	1.0004 22 Feb high	0.9953 24 Feb high	0.9918 intraday level	0.9889	0.9847 16 Feb low	0.9791 12 Feb high	0.9762 11Feb high, 200-c	0.9695 9 Feb low	0.9923	0.9972	0.9757	46
	EUR/JPY	→	126.62 16 Feb low	126.10 2015 low	125.00 figure	124.24 intraday level	124.04	123.00 figure	122.46 24 Feb low	121.95 50%2012/2014 up	121.00 projection	127.83	128.85	133.64	25
	EUR/CHF	↘	1.1028 23 Feb high	1.1000 figure	1.0950 11Feb low	1.0916 23 Feb low	1.0905	1.0865 24 Feb low	1.0827 6 Jan low	1.0778 30 Dec low	1.0756 18 Dec low	1.1025	1.0948	1.0776	32
	AUD/USD	→	.7328 31Dec high	.7305 4 Jan YTD high	.7268 200-day MA	.7259 23 Feb high	0.7182	.7146 24 Feb low	.7100 figure	.7069 19 Feb low	.7046 22 Jan high	0.7132	0.7105	0.7265	58
	USD/CAD	→	1.4015 11Feb high	1.4003 50-day MA	1.3910 16 Feb high	1.3846 19 Feb high	1.3707	1.3690 23 Feb low	1.3640 break level	1.3628 100-day MA	1.3600 figure	1.3832	1.3996	1.3261	39
	NZD/USD	→	.6752 5 Feb high	.6739 12 Feb high	.6726 22 Feb high	.6680 intraday level	0.6661	.6587 24 Feb low	.6565 19 Feb low	.6545 16 Feb low	.6509 3 Feb low	0.6629	0.6629	0.6650	55
	EUR/CAD	↘	1.5975 18-Jan high	1.5910 11-Feb high	1.5530 17-Feb high	1.5390 19-Feb high	1.5120	1.4955 5-Jan low	1.4800 figure	1.4675 7-Dec high	1.4500 7-Dec low	1.5371	1.5361	1.4643	38
	GBP/JPY	→	159.14 intraday level	158.88 intraday level	158.47 intraday level	157.32 24 Feb high	156.75	155.02 intraday level	154.73 24 Feb /9 Oct 20	154.15 6 Sep 2013 low	153.58 19 Aug 2013 high	165.14	170.01	183.61	22
EM	USD/CNH	→	6.5668 Resistance line fr	6.5578 5 Feb low	6.5504 11Feb high	6.5436 24 Feb high	6.5368	6.5256 23 Feb low	6.5164 18 Feb low	6.4988 16 Feb low	6.4866 15 Feb low	6.5512	6.5761	6.3972	46
	USD/ZAR	→	16.650 26-Jan high	16.440 3-Feb high	16.270 9-Feb high	15.870 17-Feb high	15.610	15.445 22-Feb high	15.055 23-Feb low	14.790 16-Dec low	14.490 30-Nov high	15.744	15.891	13.908	47
	USD/BRL	↘	4.1230 28 Jan high	4.0950 29 Jan high	4.0730 07 Jan high	4.0220 22 Feb high	3.9566	3.9290 22 Feb low	3.9040 100-day MA	3.8000 break level	3.7700 projection	3.9626	3.9943	3.6745	45
	USD/MXN	↘	19.440 11Feb high	19.000 figure	18.620 10 Feb low	18.394 18 Feb high	18.191	18.165 intraday low	18.025 50-day MA	17.952 17 Feb low	17.465 break level	18.468	18.050	16.770	41
	EUR/PLN	→	4.5235 Jan 2012 high	4.50~ fr mid-Jan highs	4.4720 9-Feb high	4.4175 16-Feb/ last week	4.3706	4.3695 2015 high	4.3540 22, 23-Feb lows	4.3285 13-Jan low	4.2680 4-Jan low	4.3996	4.3700	4.2494	40
	EUR/CZK	→	27.19~ 1-Oct high	27.140 Oct high	27.131 11-Feb YTD high	27.087 5-Feb high	27.038	26.960 Feb low	26.949 Dec-15/ last year l	26.914 8-Nov-13 low	25.710 7-Nov-13 low	27.022	27.017	27.084	57
	EUR/HUF	↘	318.00 Jul high, 11-Dec high	316.35 20-Jan high	313.00 9 & 11-Feb highs	311.85 17-Feb high	309.51	306.70 start Aug-15 lows	306.48 Mon low	304.40 19-May-15 low	301.90 8-May low	309.91	312.46	311.93	48
	EUR/TRY	↘	3.3760 14-Oct high	3.3545 20-Jan high	3.3420 11-Feb high	3.3145 19-Feb high	3.2417	3.1980 1-Feb low	3.1635 4-Jan low	3.1380 18-Dec low	3.1175 27-Nov high	3.2663	3.2513	3.1730	41
	USD/PLN	→	4.0481 03 Feb high	4.0000 figure	3.9825 50-day MA	3.9800 break level	3.9626	3.9422 100-day MA	3.8881 11Feb low	3.8590 28 Dec low	3.8454 200-day MA	3.9614	3.9827	3.8493	49
	USD/RUB	↘	85.95 21Jan YTD high	82.25 26 Jan high	80.63 11Feb high	78.56 22 Feb high	76.20	73.87 23 Feb low	72.32 05Jan low	71.70 2015 tops	70.33 100-day MA	77.29	76.01	65.63	46
Other Markets	S&P 500 Futures	→	1983 break level	1953 50%from Nov '15	1947 13 Jan high	1938 50-day MA	1930	1881 17 Feb low	1860 12 Feb high	1804 20 Jan low	1800 figure	1896	1938	2013	59
	DAX Futures	→	9923 27 Jan high	9800 break level	9620 04 Feb high	9586 22 Feb high	9149	9122 24 Feb low	9000 gap break	8690 11Feb low	8350 early-Oct '14 low	9303	9798	10572	43
	US 10y Futures	→	133-01+ 11Feb high	132-16 break level	132-00 12 Feb high	131-25+ intraday high	131.00	130-31+ 24 Feb low	130-06 17 Feb low	130-00 figure	129-08 20 Jan high	130.63	128.51	126.83	60
	Bund Futures	↗	168.00 figure	167.00 figure	166.50 projection	166.25 intraday high	165.97	164.75 23-Feb low	163.72 08-Feb low	162.70 29-Jan low, gap	161.55 26-Jan low	159.09	161.21	157.66	51
	WTI Oil Futures	→	34.56 50-day MA	34.21 18 Feb high	34.00 18 Feb high	33.53 23 Feb high	31.48	30.56 intraday low	30.00 figure	29.78 12 Feb low	28.74 11Feb low	30.48	33.59	47.35	56



Strong uptrend



Weak uptrend or higher in range



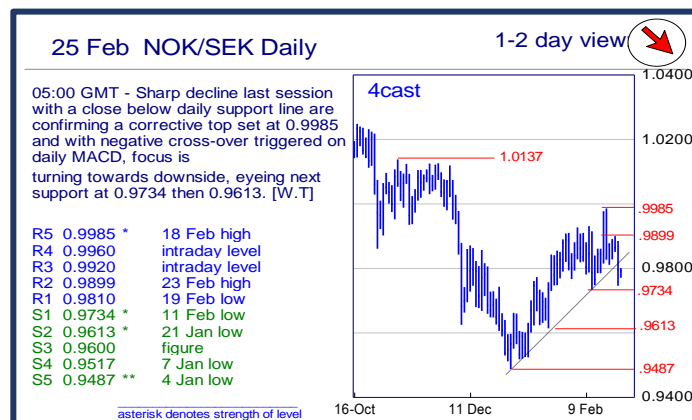
Sideways or in range









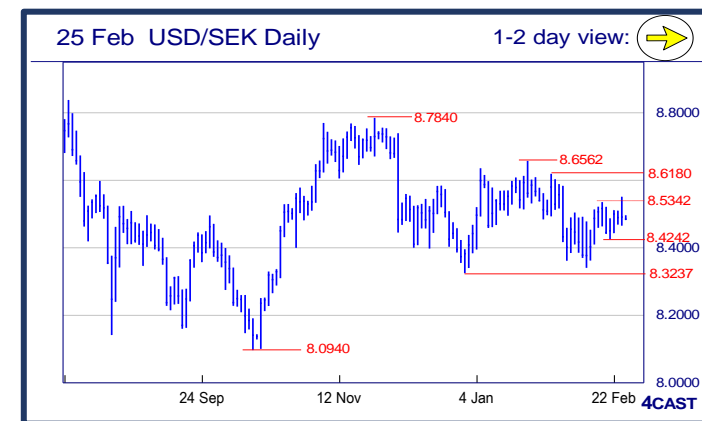
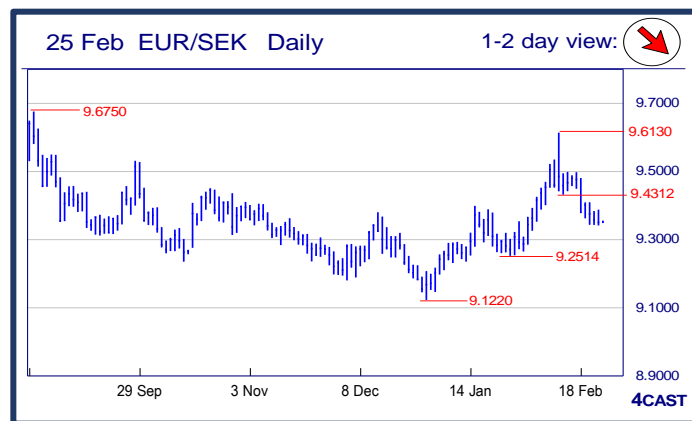
Weak downtrend or lower in range



Strong downtrend



NOK, SEK opening updates					
	1 day view	Resistance	Support	4cast	
EUR/NOK		9.7480	9.5100	Break above the 9.5100 level has seen strong rally to break the 9.6000 level though spike to 9.6200 high was not sustained. However, upside stays in focus and see scope to 9.6475 then the 9.7000 level. Only below 9.5100 expose 9.4430 low. [P.L]	
		9.7000	9.4430		
		9.6475	9.4210		
		9.6200	9.3780		
EUR/SEK		9.4797	9.3250	Still keeping pressure on the downside and need a swift push to 9.3250 support to help garner downside momentum and seeks out lower and stronger support at 9.2514 later. Lift above 9.3870 hurdle to help ease downside pressure. [W.T]	
		9.4312	9.2844		
		9.4088	9.2514		
		9.3870	9.2304		
USD/NOK		8.8335	8.6570	Break above the 8.6570 resistance triggers stronger recovery to 8.7610 spike high. Setback see support now at 8.6570 and the 8.6000 level. Higher low sought for retest of 8.7610 high and where clearance will see scope to 8.8000 level. [P.L]	
		8.7925	8.6000		
		8.7610	8.5805		
		8.7000	8.5335		
USD/SEK		8.5825	8.4644	Staged a blip-up above 8.5342 resistance to 8.5502 high last session and sharp sell-off towards closing in the appearance of a long upper shadow is making this upmove looks exhaustive. Below 8.4644 support will expose weakness twds 8.4242. [W.T]	
		8.5502	8.4422		
		8.5187	8.4242		
		8.4970	8.4086		



Strong uptrend



Weak uptrend or higher in range



Sideways or in range



Weak downtrend or lower in range



Strong downtrend