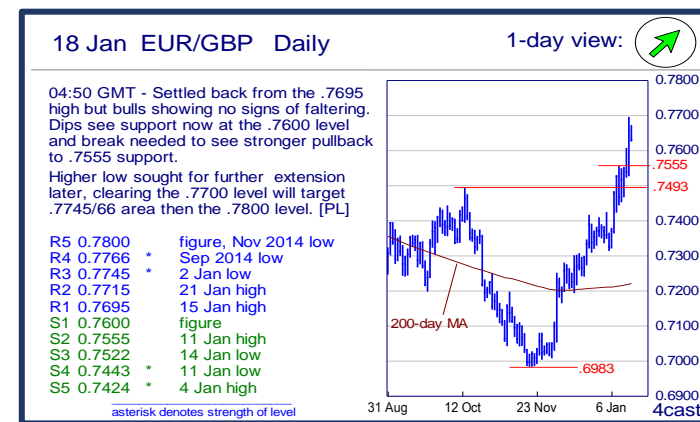
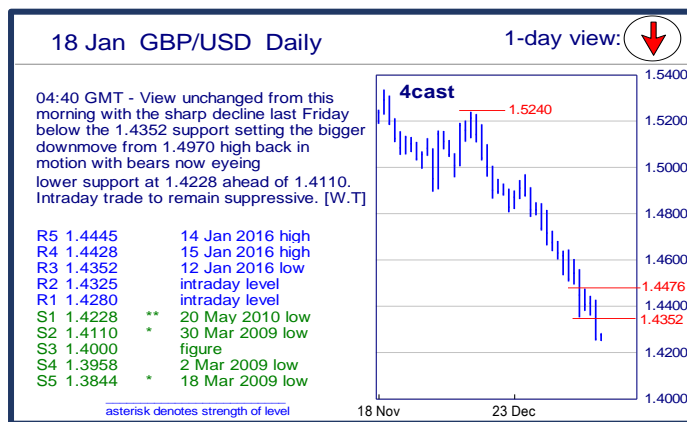
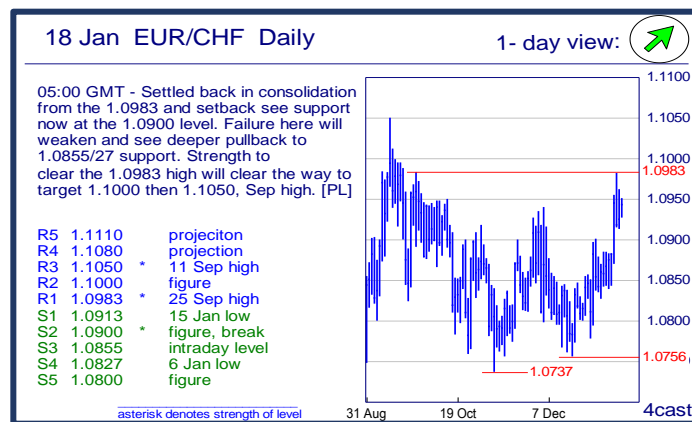
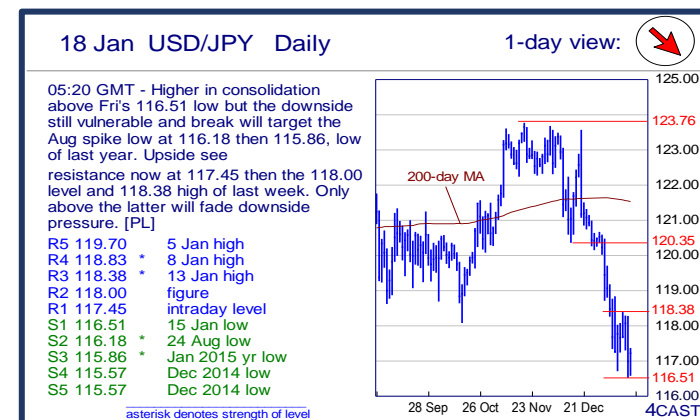
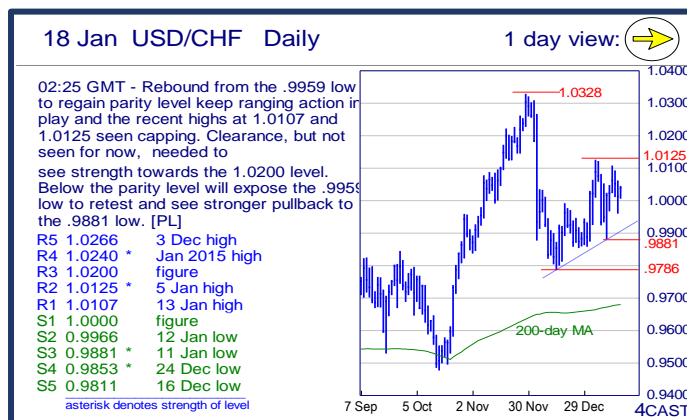
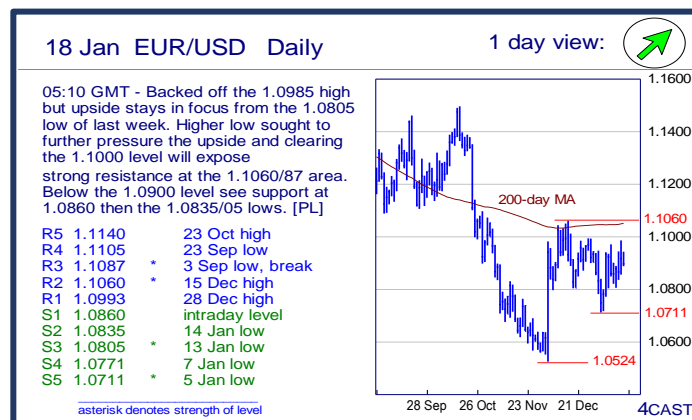


		Trends	Res 4	Res 3	Res 2	Res 1	Spot	Sup 1	Sup 2	Sup 3	Sup 4	MA20	MA50	MA200	RSI 9
Scandies	EUR/SEK	↑	9.4498	9.4353	9.4096	9.3982	9.3534	9.3450	9.3188	9.2923	9.2782	9.2397	9.2666	9.3439	69
	EUR/NOK	↗	9.9500	9.8100	9.7480	9.6910	9.6419	9.6000	9.5335	9.5100	9.4775	9.6031	9.4444	9.0767	55
	USD/SEK	↗	8.7383	8.7000	8.6615	8.6346	8.5869	8.5268	8.4939	8.4576	8.4000	8.4825	8.5631	8.4570	63
	USD/NOK	↗	9.0480	9.0000	8.9580	8.9000	8.8467	8.7565	8.7715	8.7105	8.6610	8.8141	8.7235	8.2153	53
	EUR/DKK	↗	7.4685	7.4665	7.4645	7.4640	7.4630	7.4570	7.4568	7.4545	7.4518	7.4624	7.4616	7.4614	55
	NOK/SEK	→	0.9878	0.9856	0.9815	0.9772	0.9692	0.9661	0.9622	0.9600	0.9517	0.9608	0.9803	1.0298	56
Majors	EUR/USD	↗	1.1105	1.1087	1.1060	1.0993	1.0892	1.0860	1.0835	1.0805	1.0771	1.0890	1.0821	1.1048	52
	USD/JPY	↘	118.83	118.38	118.00	117.45	117.21	116.51	116.18	115.86	115.57	119.10	121.15	121.51	26
	EUR/GBP	↗	.7766	.7745	.7715	.7695	0.7624	.7600	.7555	.7522	.7443	0.7432	0.7251	0.7218	72
	GBP/USD	↘	1.4445	1.4428	1.4352	1.4325	1.4284	1.4228	1.4110	1.4000	1.3958	1.4650	1.4923	1.5303	17
	USD/CHF	→	1.0240	1.0200	1.0125	1.0107	1.0047	1.0000	0.9966	0.9881	0.9853	0.9973	1.0019	0.9676	58
	EUR/JPY	→	129.67	129.09	128.76	128.50	127.65	127.31	126.79	126.10	125.18	129.68	131.07	134.23	29
	EUR/CHF	↗	1.1080	1.1050	1.1000	1.0983	1.0947	1.0913	1.0900	1.0855	1.0827	1.0865	1.0844	1.0689	70
	AUD/USD	↘	.7097	.7049	.7002	.6928	0.6912	.6827	.6800	.6770	.6722	0.7122	0.7170	0.7375	32
	USD/CAD	↑	1.4945	1.4940	1.4665	1.4545	1.4511	1.4400~	1.4330	1.4245	1.4178	1.4062	1.3709	1.3007	87
	NZD/USD	↘	.6650	.6590	.6541	.6509	0.6474	.6381	.6341	.6289	.6237	0.6686	0.6648	0.6783	24
	EUR/CAD	↗	1.6095	1.6000	1.5950	1.5900	1.5802	1.5550	1.5320	1.4955	1.4895	1.5309	1.4835	1.4364	78
	GBP/JPY	↘	170.58	170.00	169.17	168.82	167.3900	166.23	166.00	165.85	165.06	174.4820	180.8456	185.9667	17
EM	USD/CNH	↘	6.6920	6.6525	6.6255	6.6170	6.5790	6.5604	6.5450	6.5252	6.5142	6.5913	6.5111	6.3462	47
	USD/ZAR	↘	17.000	16.950	16.800	16.790	16.6884	16.025	15.610	15.270	15.055	15.8645	15.0743	13.3501	71
	USD/BRL	↘	4.1530	4.1440	4.1000	4.0630	4.0464	3.8680	3.8670	3.8000	3.7000	3.9872	3.8801	3.5363	62
	USD/MXN	→	18.750	18.500	18.420	18.250	18.198	18.000	17.700	17.465	17.390	17.553	17.107	16.325	78
	EUR/PLN	↑	4.7000	4.6000	4.5970	4.5235	4.4831	4.3762	4.3700	4.3285	4.2680	4.3137	4.2941	4.1959	86
	EUR/CZK	→	27.19~	27.140	27.105	27.065	27.005	26.960	26.949	26.914	25.710	27.014	27.016	27.137	47
	EUR/HUF	↘	320.25	319.10	318.00	316.55	314.94	313.60	313.00	312.15	311.00	314.65	313.54	310.83	50
	EUR/TRY	↗	3.4295	3.4000	3.3760	3.3465	3.3087	3.2500	3.2040	3.1380	3.1175	3.2350	3.1691	3.1279	68
	USD/PLN	↗	4.2865	4.2310	4.2000	4.1457	4.1161	3.9876	3.9625	3.9200	3.9000	3.9618	3.9690	3.8002	77
	USD/RUB	↗	78.50	78.12	78.00	77./80	78.08	75.72	74.55	73.50	71.35	73.88	70.02	61.84	80
Other Markets	S&P 500 Futures	↘	2075	2000	1983	1946	1879	1871	1860	1853	1824	1980	2027	2036	30
	DAX Futures	↘	10523	10227	10166	9657	9510	9410	9390	9384	9301	10301	10661	10914	23
	US 10y Futures	↗	129-18½	129-09½	128-29	128-23	128.31	128-08½	127-20	127-10	126-12	126.82	126.42	126.44	72
	Bund Futures	↗	163.00	162.00	161.00	160.66	159.01	159.36	158.70	158.45	157.52	157.92	157.60	156.75	60
	WTI Oil Futures	↘	36.39	35.35	31.77	30.00~	29.11	29.00	26.65	25.04	24.54	34.36	38.98	50.35	19

		Trends	Res 4	Res 3	Res 2	Res 1	Spot	Sup 1	Sup 2	Sup 3	Sup 4	MA20	MA 50	MA 200	RSI 9
Scandies	EUR/SEK	↑	9.4498 21 Oct high	9.4353 28 Oct high	9.4096 2 Nov high	9.3982 15 Jan high	9.3534	9.3450 200-day MA	9.3188 21 Dec high	9.2923 11 Jan high	9.2782 15 Jan low	9.2397	9.2666	9.3439	69
	EUR/NOK	↗	9.9500 19 Dec 08 high	9.8100 24 Dec 08 low	9.7480 12 Jan high	9.6910 15 Jan high	9.6419	9.6000 figure	9.5335 13 Jan low	9.5100 14 Jan low	9.4775 24 Dec low	9.6031	9.4444	9.0767	55
	USD/SEK	↗	8.7383 3 Dec high	8.7000 figure	8.6615 12 Jan low	8.6346 5 Jan high	8.5869	8.5268 15 Jan low	8.4939 14 Jan low	8.4576 7 Jan low	8.4000 figure	8.4825	8.5631	8.4570	63
	USD/NOK	↗	9.0480 30 Jan 02 low	9.0000 figure	8.9580 11 Jan high	8.9000 figure	8.8467	8.7565 15 Jan low	8.7715 4 Jan low	8.7105 28 Dec high	8.6610 29 Dec low	8.8141	8.7235	8.2153	53
	EUR/DKK	↗	7.4685 May-15 high	7.4665 24-Dec high	7.4645 31-Dec high	7.4640 14-Jan highs	7.4630	7.4570 7-Jan low	7.4568 Dec-15 low	7.4545 Oct-15 low	7.4518 Jul-15 low	7.4624	7.4616	7.4614	55
	NOK/SEK	→	0.9878 8 Dec high	0.9856 17 Dec high	0.9815 18 Dec high	0.9772 15 Jan high	0.9692	0.9661 5 Jan high, break	0.9622 14 Jan low	0.9600 figure	0.9517 7 Jan low	0.9608	0.9803	1.0298	56
Majors	EUR/USD	↗	1.1105 23 Sep low	1.1087 3 Sep low, break	1.1060 15 Dec high	1.0993 28 Dec high	1.0892	1.0860 intraday level	1.0835 14 Jan low	1.0805 13 Jan low	1.0771 7 Jan low	1.0890	1.0821	1.1048	52
	USD/JPY	↘	118.83 8 Jan high	118.38 13 Jan high	118.00 figure	117.45 intraday level	117.21	116.51 15 Jan low	116.18 24 Aug low	115.86 Jan 20 15 yr low	115.57 Dec 2014 low	119.10	121.15	121.51	26
	EUR/GBP	↗	.7766 Sep 2014 low	.7745 2 Jan low	.7715 21 Jan high	.7695 15 Jan high	0.7624	.7600 figure	.7555 11 Jan high	.7522 14 Jan low	.7443 11 Jan low	0.7432	0.7251	0.7218	72
	GBP/USD	↘	1.4445 14 Jan 2016 high	1.4428 15 Jan 2016 high	1.4352 12 Jan 2016 low	1.4325 intraday level	1.4284	1.4228 20 May 2010 low	1.4110 30 Mar 2009 low	1.4000 figure	1.3958 2 Mar 2009 low	1.4650	1.4923	1.5303	17
	USD/CHF	→	1.0240 Jan 2015 high	1.0200 figure	1.0125 5 Jan high	1.0107 13 Jan high	1.0047	1.0000 figure	0.9966 12 Jan low	0.9881 11 Jan low	0.9853 24 Dec low	0.9973	1.0019	0.9676	58
	EUR/JPY	→	129.67 27 Nov low	129.09 8 Jan high	128.76 14 Jan high	128.50 intraday level	127.65	127.31 11 Jan low	126.79 7 Jan low	126.10 2015 low	125.18 14 Jun 13 low	129.68	131.07	134.23	29
	EUR/CHF	↗	1.1080 projection	1.1050 11 Sep high	1.1000 figure	1.0983 25 Sep high	1.0947	1.0913 15 Jan low	1.0900 figure, break	1.0855 intraday level	1.0827 6 Jan low	1.0865	1.0844	1.0689	70
	AUD/USD	↘	.7097 Dec low, break	.7049 13 Jan high	.7002 15 Jan high	.6928 11 Jan low	0.6912	.6827 15 Jan low	.6800 figure	.6770 30 Mar 09 low	.6722 19 Mar 09 low	0.7122	0.7170	0.7375	32
	USD/CAD	↑	1.4945 21-Mar 03 high	1.4940 74-Apr-03 high	1.4665 24-Apr-03 high	1.4545 Fri am. high	1.4511	1.4400~ Fri rally accel	1.4330 Thurs low	1.4245 11 Jan high	1.4178 08 Jan high	1.4062	1.3709	1.3007	87
	NZD/USD	↘	.6650 intraday level	.6590 13 Jan high	.6541 8 Jan low	.6509 11 Jan low, break	0.6474	.6381 15 Jan low	.6341 30 Sep low	.6289 29 Sep low	.6237 23 Sep low	0.6686	0.6648	0.6783	24
	EUR/CAD	↗	1.6095 Sep 09 high	1.6000 figure	1.5950 Dec 09 high	1.5900 figure	1.5802	1.5550 24-Aug 15 high	1.5320 S/R level	1.4955 5-Jan low	1.4895 11-Dec low	1.5309	1.4835	1.4364	78
	GBP/JPY	↘	170.58 15 Jan 2016 high	170.00 figure	169.17 12 Jan 2016 low	168.82 intraday level	167.39	166.23 intraday level	166.00 figure	165.85 38.2% of 117.24-11	165.06 6 Feb 2014 low	174.48	180.85	185.97	17
EM	USD/CNH	↘	6.6920 8 Jan high	6.6525 8 Jan low, break	6.6255 14 Jan high	6.6170 intraday level	6.5790	6.5604 13 Jan low	6.5450 Uptrend line fr 30	6.5252 22 Dec low	6.5142 16 Dec low	6.5913	6.5111	6.3462	47
	USD/ZAR	↘	17.000 figure	16.950 12-Jan high	16.800 figure	16.790 Tod. intra high	16.688	16.025 11-Dec high	15.610 6-Jan low	15.270 30-Dec low	15.055 28-Dec low	15.865	15.074	13.350	71
	USD/BRL	↘	4.1530 29 Sep high	4.1440 break level	4.1000 break level	4.0630 30 Sep high	4.0464	3.8680 50-day MA	3.8670 100-day MA	3.8000 break level	3.7000 range bottom	3.9872	3.8801	3.5363	62
	USD/MXN	→	18.750 figure	18.500 figure	18.420 2x Sep-Oct declin	18.250 projection	18.198	18.000 figure, 11-Jan high	17.700 08 Jan low	17.465 14 Dec high	17.390 break level	17.553	17.107	16.325	78
	EUR/PLN	↑	4.7000 figure	4.6000 Jan 2009 high	4.5970 2011 high	4.5235 Jan 2012 high	4.4831	4.3762 12-Jan high	4.3700 2015 high	4.3285 13-Jan low	4.2680 4-Jan low	4.3137	4.2941	4.1959	86
	EUR/CZK	→	27.19~ 1-Oct high	27.140 Oct high	27.105 3-Dec high	27.065 fr mid-Dec highs	27.005	26.960 11-Dec low	26.949 Dec-15/ last year l	26.914 8-Nov-13 low	25.710 7-Nov-13 low	27.014	27.016	27.137	47
	EUR/HUF	↘	320.25 Jan highs blw spike	319.10 12-Jan high	318.00 Jul high, 11-Dec hi	316.55 14-Jan high	314.94	313.60 8-Jan low	313.00 5-Jan low	312.15 30-Dec low	311.00 7-Dec low	314.65	313.54	310.83	50
	EUR/TRY	↗	3.4295 2-Oct high	3.4000 figure	3.3760 14-Oct high	3.3465 15-Oct high	3.3087	3.2500 S/R level	3.2040 6-Jan low	3.1380 18-Dec low	3.1175 27-Nov high	3.2350	3.1691	3.1279	68
	USD/PLN	↗	4.2865 8 Feb 2002 high	4.2310 5 Jul 2002 high	4.2000 figure	4.1457 28 Mar 2003 high	4.1161	3.9876 14 Jan low	3.9625 50-day MA	3.9200 04 Jan low	3.9000 break level	3.9618	3.9690	3.8002	77
	USD/RUB	↗	78.50 break level	78.12 projection	78.00 figure	77.80 Fri pm high	78.08	75.72 13-Jan low	74.55 12 Jan low	73.50 8-Jan low	71.35 04 Jan low	73.88	70.02	61.84	80
Other Markets	S&P 500 Futures	↘	2075 30 Dec high	2000 100-day MA	1983 14 Dec low	1946 13 Jan high	1879	1871 14 Jan low	1860 break level	1853 29 Sep low	1824 24 Aug low	1980	2027	2036	30
	DAX Futures	↘	10523 04 Jan high	10227 07 Jan high	10166 13-Jan high	9657 11-Jan low	9510	9410 Fri low	9390 02 Oct low	9384 Jan-15 low	9301 29 Sep low	10301	10661	10914	23
	US 10y Futures	↗	129-18½ 02 Oct-15 high	129-09½ 14-Oct high	128-29 Fri pm high	128-23 base Fri pm spike	128.31	128-08½ 13 Jan high	127-20 Thurs low	127-10 11 Dec high	126-12 50-day MA	126.82	126.42	126.44	72
	Bund Futures	↗	163.00 figure	162.00 figure	161.00 figure	160.66 27-Nov high	159.01	159.36 11-Dec high	158.70 12-Jan low	158.45 5-Jan low	157.52 29-Dec low	157.92	157.60	156.75	60
	WTI Oil Futures	↘	36.39 06 Jan high	35.35 21 Dec low	31.77 21 Dec low	30.00~ Tues-Thurs lows	29.11	29.00 figure	26.65 Sep-03 contin low	25.04 2 May 2003 low	24.54 20 Jul 2001 low	34.36	38.98	50.35	19



Strong uptrend



Weak uptrend or higher in range



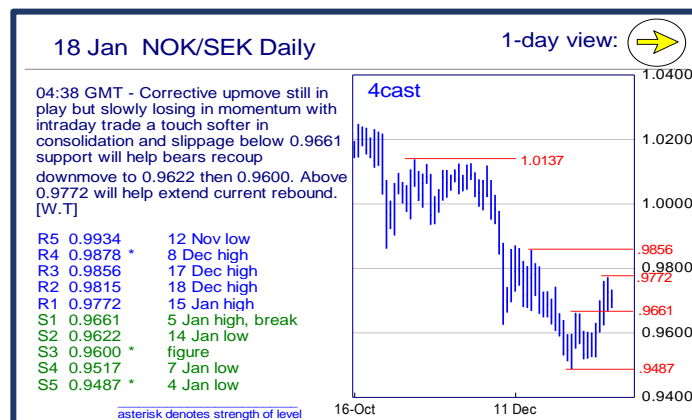
Sideways or in range



Weak downtrend or lower in range

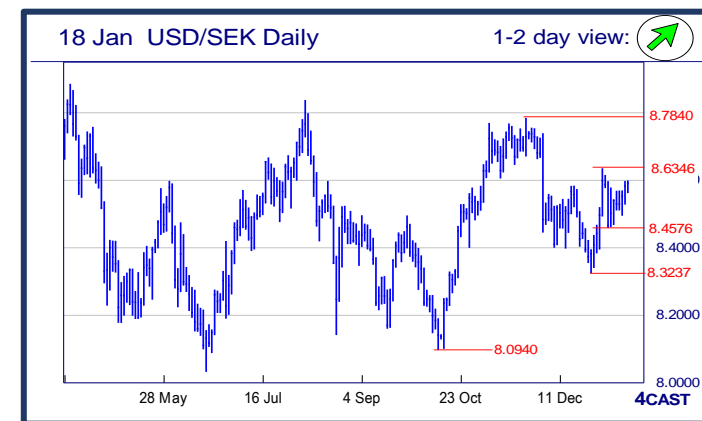
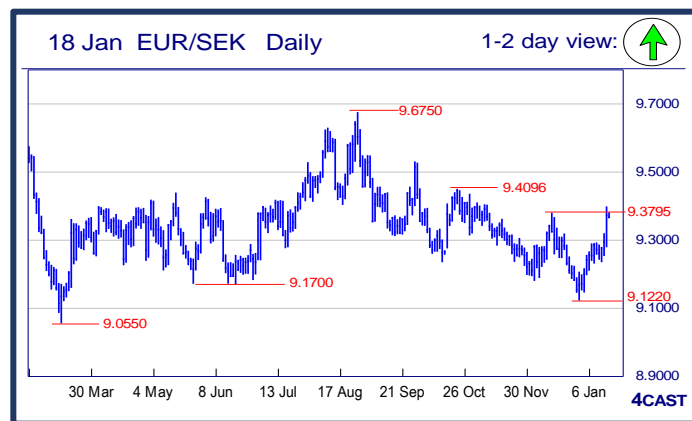
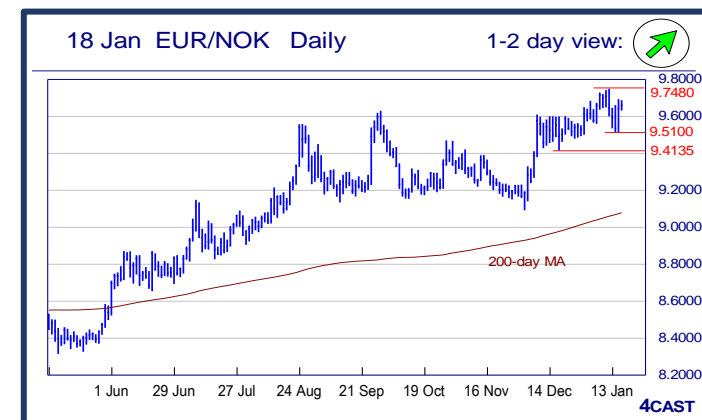


Strong downtrend



NOK, SEK opening updates

	1 day view	Resistance	Support	4cast
EUR/NOK		9.9500 9.8100 9.7480 9.6910	9.6000 9.5335 9.5100 9.4775	Rebound from the 9.5100 low to regain the 9.6000 level and break the 9.6590 resistance signal an outside range on Fri and this is seen reversing the drop from 9.7480 high. Above the latter will see strength to target 9.8100 next. [P.L]
EUR/SEK		9.4498 9.4353 9.4096 9.3982	9.3450 9.3188 9.2923 9.2782	Sharp rally last Friday, surging above the 9.3795 strong hurdle setting bulls back on firm footing and eyes higher resistance at 9.4353 and this should keep this cross on a supportive undertone during intraday trading. [W.T]
USD/NOK		9.0480 9.0000 8.9580 8.9000	8.7565 8.7715 8.7105 8.6610	Steadied at the 8.7565 low and rebound see scope for return to the 8.9000 level. Above this will be positive and clear the way for return to the 9.0000 level and see scope for bull extension. Support now at 8.8000 then 8.7565 low. [P.L]
USD/SEK		8.7383 8.7000 8.6615 8.6346	8.5268 8.4939 8.4576 8.4000	Bounce off 8.4939 low with supportive stance seen on daily technical tools keeping focus towards the stronger resistance at 8.6346 and need clearance to put bulls on stronger footing. [W.T]



Strong uptrend



Weak uptrend or higher in range



Sideways or in range



Weak downtrend or lower in range



Strong downtrend