

Danske Technical Update

Published - 5 February 2016 05:39

Powered by  4CAST
4castweb.com



		Trends	Res 4	Res 3	Res 2	Res 1	Spot	Sup 1	Sup 2	Sup 3	Sup 4	MA20	MA50	MA200	RSI 9
Scandies	EUR/SEK	↗	9.5488	9.5304	9.4498	9.4353	9.4113	9.3794	9.3517	9.3250	9.2844	9.3166	9.2734	9.3427	69
	EUR/NOK	→	9.7000	9.6820	9.6000	9.5805	9.5237	9.4485	9.3780	9.3278	9.3000	9.5432	9.5184	9.1520	51
	USD/SEK	↓	8.6180	8.5825	8.4830	8.4582	8.4081	8.3605	8.3237	8.3000	8.2871	8.5289	8.5107	8.4522	35
	USD/NOK	↓	8.7565	8.7462	8.6000	8.5882	8.5068	8.4465	8.4311	8.4000	8.3206	8.7346	8.7332	8.2805	30
	EUR/DKK	→	7.47~	7.4685	7.4665	7.4655	7.4631	7.4595	7.4570	7.4568	7.4545	7.4632	7.4623	7.4614	49
	NOK/SEK	↗	1.0000	0.9977	0.9934	0.9926	0.9865	0.9827	0.9792	0.9766	0.9746	0.9748	0.9731	1.0210	64
Majors	EUR/USD	↗	1.1396	1.1351	1.1306	1.1270	1.1188	1.1158	1.1060	1.0993	1.0968	1.0920	1.0894	1.1053	74
	USD/JPY	↘	118.24	117.80	117.66	117.33	116.70	116.47	115.98	115.57	115.31	118.19	119.91	121.45	35
	EUR/GBP	↗	.7875	.7830	.7800	.7756	0.7684	.7666	.7592	.7526	.7493	0.7605	0.7416	0.7248	64
	GBP/USD	↑	1.4786	1.4703	1.4668	1.4613	1.4556	1.4530	1.4446	1.4384	1.4327	1.4356	1.4692	1.5251	60
	USD/CHF	↘	1.0110	1.0074	1.0033	0.9990	0.9942	0.9881	0.9853	0.9811	0.9786	1.0079	1.0007	0.9716	35
	EUR/JPY	→	132.47	132.32	132.03	131.66	130.60	130.06	129.60	128.95	128.76	129.06	130.61	134.22	60
	EUR/CHF	↗	1.0300	1.0256	1.1200	1.1155	1.1124	1.1100	1.1062	1.1050	1.1030	1.1009	1.0905	1.0737	77
	AUD/USD	↑	.7328	.7305	.7265	.7246	0.7181	.7154	.7140	.7074	.7043	0.7015	0.7138	0.7322	64
	USD/CAD	↘	1.4000	1.3908	1.3800	1.3753	1.3732	1.3639	1.3625	1.3600	1.3547	1.4174	1.3927	1.3140	30
	NZD/USD	↑	.6883	.6858	.6800	.6758	0.6687	.6642	.6606	.6590	.6560	0.6514	0.6645	0.6705	64
	EUR/CAD	↘	1.5875	1.5675	1.5550	1.5440	1.5366	1.5110	1.4955	1.4800	1.4675	1.5480	1.5173	1.4516	50
	GBP/JPY	↘	174.52	173.76	172.48	171.28	169.9300	169.59	168.57	166.98	165.00	169.7010	176.2250	185.2723	44
EM	USD/CNH	↓	6.6557	6.6412	6.6188	6.5918	6.5773	6.5604	6.5252	6.5142	6.5000	6.5985	6.5644	6.3744	41
	USD/ZAR	↘	17.100	16.970	16.650	16.440	15.8754	15.610	15.270	15.055	14.790	16.3876	15.6566	13.6472	40
	USD/BRL	↘	4.0280	4.0000	3.9470	3.9070	3.8884	3.8450	3.8000	3.7700	3.7000	4.0266	3.9530	3.6081	32
	USD/MXN	→	18.799	18.680	18.607	18.500	18.259	18.015	18.000	17.844	17.547	18.268	17.593	16.537	52
	EUR/PLN	↗	4.5975	4.5235	4.50~	4.4300	4.4213	4.3762	4.3700	4.3695	4.3285	4.4299	4.3488	4.2261	51
	EUR/CZK	→	27.19~	27.140	27.105	27.080	27.014	26.960	26.949	26.914	25.710	27.011	27.015	27.109	51
	EUR/HUF	↘	318.00	316.35	314.65	312.10	310.25	309.60	309.35	308.62	306.70	313.14	313.76	311.64	37
	EUR/TRY	↗	3.4000	3.3760	3.3545	3.2985	3.2605	3.1980	3.1635	3.1380	3.1175	3.2696	3.2209	3.1512	54
	USD/PLN	↘	4.1000	4.0481	4.0000	3.9957	3.9500	3.9200	3.9172	3.9000	3.8590	4.0578	3.9930	3.8262	29
	USD/RUB	↘	85.95	82.25	80.00	79.90	76.70	74.55	73.25	72.32	71.70	77.98	73.64	63.72	48
Other Markets	S&P 500 Futures	↘	1983	1953	1947	1940	1904	1865	1850	1824	1800	1896	1983	2025	47
	DAX Futures	↘	10119	10000	9923	9635	9394	9262	9217	9125	9000	9691	10307	10742	34
	US 10y Futures	→	131-05+	131-00	130-30	130-24	130.15	129-22	128-00	127-10	127-09	128.80	127.31	126.54	78
	Bund Futures	→	166.00	165.00	164.90	164.30	163.52	162.70	161.55	161.13	160.66	157.92	159.02	157.11	59
	WTI Oil Futures	→	36.48	35.00	34.82	34.18	31.75	30.00	29.40	29.25	27.56	31.50	36.41	49.06	48

Copyright and other intellectual property rights in the material in this document belong to 4CAST Limited and/or 4CAST Inc (4CAST). The material shall not, under any circumstances, be reproduced or distributed in whole or part without the prior written consent of 4CAST. The material in this document is based upon information which 4CAST considers to be reliable and the analysis and opinion in the material represents the view of 4CAST at the time of transmission (unless stated otherwise). Such analysis and opinion is subject to change without notice. The material is intended for use by parties knowledgeable and experienced in the financial sector and is only one source amongst others to be considered in carrying on their business or activity. ACCORDINGLY 4CAST MAKES NO REPRESENTATION OR WARRANTY EXPRESS OR IMPLIED STATUTORY OR OTHERWISE (INCLUDING BUT NOT LIMITED TO) THE ACCURACY OF THE MATERIAL IN THIS DOCUMENT OR THE FITNESS FOR PURPOSE AND ALL SUCH REPRESENTATIONS AND WARRANTIES ARE HEREBY EXPRESSLY EXCLUDED. 4CAST does not give or purport to give investment advice. Any action taken by users on the basis of material in this document is entirely at their own risk. Independent investment advice should be sought where appropriate. 4CAST website may link to or be linked to other Internet sites. 4CAST does not accept responsibility for the content of such other sites. 4CAST's terms and conditions of business apply to all fee-paying subscribers and trial users.

www.danskeresearch.com

Danske Technical Update

Published - 5 February 2016 05:39

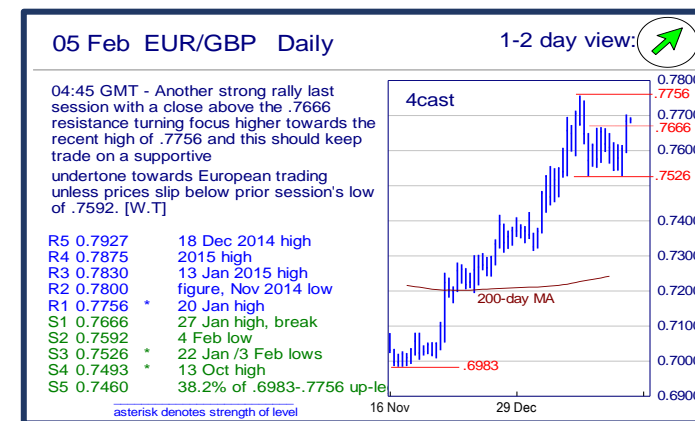
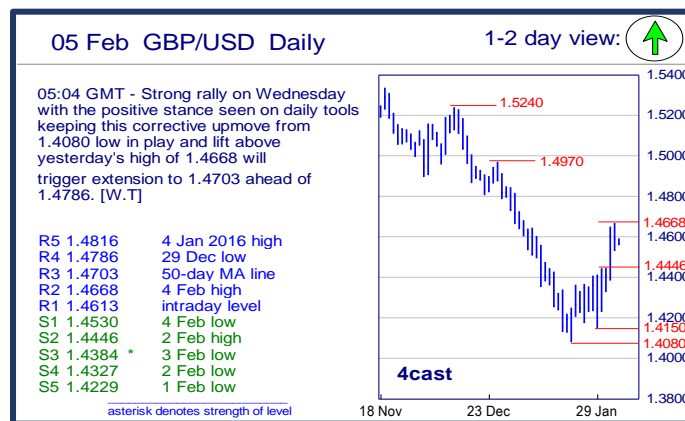
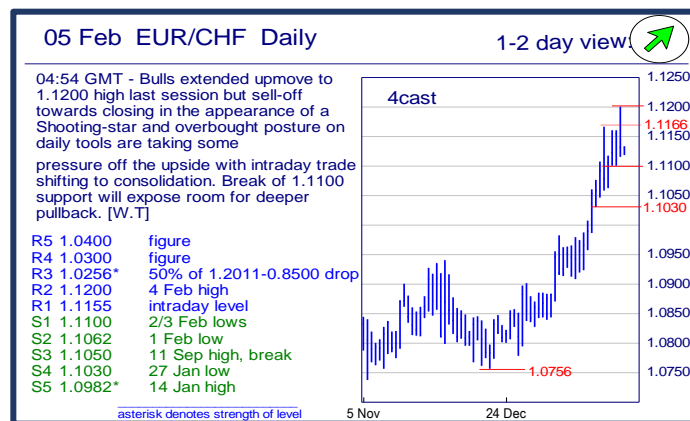
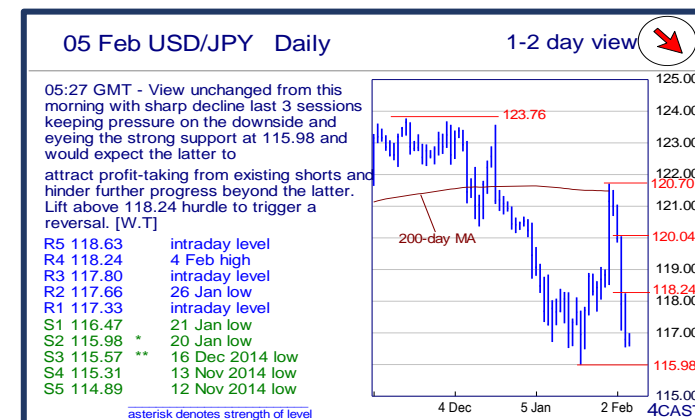
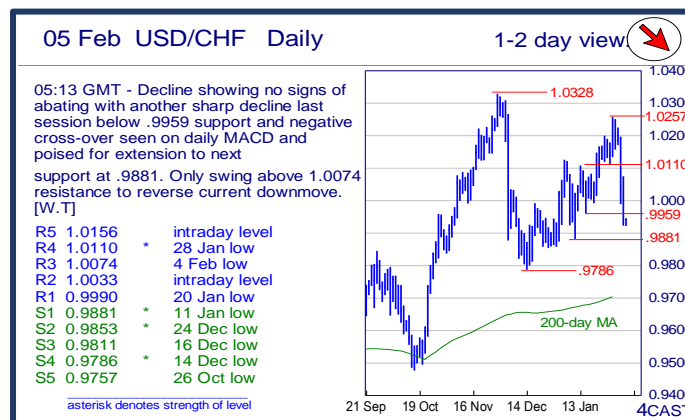
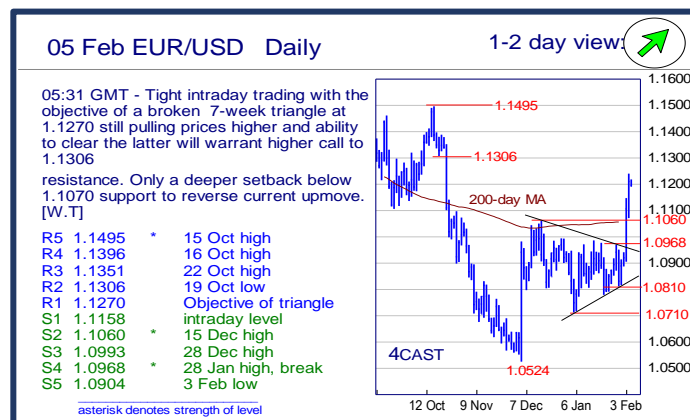
Powered by **4CAST**
4castweb.com

Danske Bank

		Trends	Res 4	Res 3	Res 2	Res 1	Spot	Sup 1	Sup 2	Sup 3	Sup 4	MA20	MA 50	MA 200	RSI 9
Scandies	EUR/SEK	↗	9.5488 1Sep high	9.5304 28 Sep high	9.4498 21Oct high	9.4353 28 Oct high	9.4113	9.3794 14 Dec high	9.3517 4 Feb low	9.3250 3 Feb low	9.2844 2 Feb low	9.3166	9.2734	9.3427	69
	EUR/NOK	→	9.7000 figure	9.6820 4 Jan high	9.6000 figure	9.5805 3 Feb high	9.5237	9.4485 2 Feb low	9.3780 29 Jan low	9.3278 3 Dec high	9.3000 figure	9.5432	9.5184	9.1520	51
	USD/SEK	↓	8.6180 29 Jan high	8.5825 3 Feb high	8.4830 27 Jan low	8.4582 4 Feb high	8.4081	8.3605 4 Feb low	8.3237 29 Dec low	8.3000 figure	8.2871 21Oct low	8.5289	8.5107	8.4522	35
	USD/NOK	↓	8.7565 15 Jan low	8.7462 2 Feb high	8.6000 29 Jan low	8.5882 4 Feb high	8.5068	8.4465 4 Feb low	8.4311 2 Nov low	8.4000 figure	8.3206 26 Oct low	8.7346	8.7332	8.2805	30
	EUR/DKK	→	7.47~ early Apr lows	7.4685 May-15 high	7.4665 24-Dec high	7.4655 20-1-Jan YTD hig	7.4631	7.4595 22-Jan low	7.4570 7-Jan low	7.4568 Dec-15 low	7.4545 Oct-15 low	7.4632	7.4623	7.4614	49
	NOK/SEK	↗	1.0000 figure	0.9977 7 Dec high	0.9934 12 Nov low	0.9926 4 Feb high	0.9865	0.9827 4 Feb low	0.9792 3 Feb low	0.9766 2 Feb low	0.9746 25 Jan low	0.9748	0.9731	1.0210	64
Majors	EUR/USD	↗	1.1396 16 Oct high	1.1351 22 Oct high	1.1306 19 Oct low	1.1270 Objective of trian	1.1188	1.1158 intraday level	1.1060 15 Dec high	1.0993 28 Dec high	1.0968 28 Jan high, break	1.0920	1.0894	1.1053	74
	USD/JPY	↘	118.24 4 Feb high	117.80 intraday level	117.66 26 Jan low	117.33 intraday level	116.70	116.47 21 Jan low	115.98 20 Jan low	115.57 16 Dec 2014 low	115.31 13 Nov 2014 low	118.19	119.91	121.45	35
	EUR/GBP	↗	.7875 2015 high	.7830 13 Jan 2015 high	.7800 figure, Nov 2014 l	.7756 20 Jan high	0.7684	.7666 27 Jan high, break	.7592 4 Feb low	.7526 22 Jan/3 Feb low	.7493 13 Oct high	0.7605	0.7416	0.7248	64
	GBP/USD	↗	1.4786 29 Dec low	1.4703 50-day MA line	1.4668 4 Feb high	1.4613 intraday level	1.4556	1.4530 4 Feb low	1.4446 2 Feb high	1.4384 3 Feb low	1.4327 2 Feb low	1.4356	1.4692	1.5251	60
	USD/CHF	↘	1.0110 28 Jan low	1.0074 4 Feb low	1.0033 intraday level	0.9990 20 Jan low	0.9942	0.9881 11 Jan low	0.9853 24 Dec low	0.9811 16 Dec low	0.9786 14 Dec low	1.0079	1.0007	0.9716	35
	EUR/JPY	→	132.47 28 Dec high	132.32 29 Jan high	132.03 1Feb high	131.66 4 Feb high	130.60	130.06 3 Feb low	129.60 29 Jan low	128.95 28 Jan low	128.76 14 Jan high	129.06	130.61	134.22	60
	EUR/CHF	↗	1.0300 figure	1.0256 50%of 12011-0.8	1.1200 4 Feb high	1.1155 intraday level	1.1124	1.1100 2/3 Feb lows	1.1062 1Feb low	1.1050 11Sep high, break	1.1030 27 Jan low	1.1009	1.0905	1.0737	77
	AUD/USD	↗	.7328 31Dec high, 200~	.7305 4 Jan high	.7265 Objective of inver	.7246 29 Dec low	0.7181	.7154 4 Feb low	.7140 29 Jan high, break	.7074 intraday level	.7043 intraday level	0.7015	0.7138	0.7322	64
	USD/CAD	↘	1.4000 figure	1.3908 50-day MA	1.3800 break level	1.3753 03 Feb low	1.3732	1.3639 intraday low	1.3625 early-Dec breako	1.3600 figure	1.3547 100-day MA	1.4174	1.3927	1.3140	30
	NZD/USD	↗	.6883 29 Dec high	.6858 4 Jan high	.6800 figure	.6758 5 Jan high	0.6687	.6642 4 Feb low	.6606 100-day MA line	.6590 13 Jan high	.6560 21 Jan high, break	0.6514	0.6645	0.6705	64
	EUR/CAD	↘	1.5875 21-Jan high	1.5675 19-Jan low	1.5550 24-Aug 15 high	1.5440 27-Jan high	1.5366	1.5110 1-Feb low	1.4955 5-Jan low	1.4800 figure	1.4675 7-Dec high	1.5480	1.5173	1.4516	50
	GBP/JPY	↘	174.52 intraday level	173.76 3 Feb high	172.48 4 Feb high	171.28 intraday level	169.93	169.59 intraday level	168.57 27 Jan low	166.98 26 Jan low	165.00 figure	169.70	176.23	185.27	44
EM	USD/CNH	↓	6.6557 50%of 6.7510-6.5	6.6412 intraday level	6.6188 4 Feb high	6.5918 29 Jan low	6.5773	6.5604 13 Jan low	6.5252 22 Dec low	6.5142 16 Dec low	6.5000 figure	6.5985	6.5644	6.3744	41
	USD/ZAR	↘	17.100 figure	16.970 18-Jan high	16.650 26-Jan high	16.440 3-Feb high	15.875	15.610 6-Jan low	15.270 30-Dec low	15.055 28-Dec low	14.790 16-Dec low	16.388	15.657	13.647	40
	USD/BRL	↘	4.0280 break level	4.0000 figure	3.9470 50-day MA	3.9070 100-day MA	3.8884	3.8450 intraday low	3.8000 break level	3.7700 projection	3.7000 Nov lows	4.0266	3.9530	3.6081	32
	USD/MXN	→	18.799 21 Jan high	18.680 break level	18.607 03 Feb high	18.500 break level	18.259	18.015 intraday low	18.000 break level	17.844 15 Jan low	17.547 50-day MA	18.268	17.593	16.537	52
	EUR/PLN	↗	4.5975 Dec 2011 high	4.5235 Jan 2012 high	4.50~ fr mid-Jan highs	4.4300 19-Jan low	4.4213	4.3762 12-Jan high	4.3700 Tues low	4.3695 2015 high	4.3285 13-Jan low	4.4299	4.3488	4.2261	51
	EUR/CZK	→	27.19~ 1-Oct high	27.140 Oct high	27.105 3-Dec high	27.080 21-Jan high	27.014	26.960 11-Dec low	26.949 Dec-15/ last year l	26.914 8-Nov-13 low	25.710 7-Nov-13 low	27.011	27.015	27.109	51
	EUR/HUF	↘	318.00 Jul high, 11-Dec hi	316.35 20-Jan high	314.65 last week high	312.10 2, 3-Feb highs	310.25	309.60 2-Feb YTD low	309.35 3-Dec low	308.62 20-Nov ow	306.70 start Aug low	313.14	313.76	311.64	37
	EUR/TRY	↗	3.4000 figure	3.3760 14-Oct high	3.3545 20-Jan high	3.2985 26-Jan high	3.2605	3.1980 1-Feb low	3.1635 4-Jan low	3.1380 18-Dec low	3.1175 27-Nov high	3.2696	3.2209	3.1512	54
	USD/PLN	↘	4.1000 break level	4.0481 03 Feb high	4.0000 figure	3.9957 50-day MA	3.9500	3.9200 projection	3.9172 100-day MA	3.9000 break level	3.8590 28 Dec low	4.0578	3.9930	3.8262	29
	USD/RUB	↘	85.95 21 Jan high	82.25 26 Jan high	80.00 Dec '14 high; brea	79.90 02, 03 Feb highs	76.70	74.55 29 Dec low	73.25 50-day MA	72.32 05 Jan low	71.70 2015 tops	77.98	73.64	63.72	48
Other Markets	S&P 500 Futures	↘	1983 break level	1953 50%from Nov '15	1947 13 Jan high	1940 01Feb high	1904	1865 03 Feb low	1850 break level	1824 24 Aug low	1800 figure	1896	1983	2025	47
	DAX Futures	↘	10119 Dec '15 low	10000 figure	9923 27 Jan high	9635 break level	9394	9262 04 Feb low	9217 Dec '14 low	9125 Nov '14 low	9000 figure	9691	10307	10742	34
	US 10y Futures	→	131-05+ Jan '15 contin high	131-00 figure	130-30 projection	130-24 03 Feb high	130.15	129-22 29 Jan high	128-00 break level	127-10 11Dec high	127-09 50-day MA	128.80	127.31	126.54	78
	Bund Futures	→	166.00 figure	165.00 figure	164.90 range MM	164.30 channel line	163.52	162.70 29-Jan low, gap	161.55 26-Jan low	161.13 25-Jan low	160.66 last year's high	157.92	159.02	157.11	59
	WTI Oil Futures	→	36.48 21Dec low	35.00 figure	34.82 figure	34.18 01Feb high	31.75	30.00 figure	29.40 03 Feb low	29.25 26 Jan low	27.56 20 Jan low	31.50	36.41	49.06	48

Copyright and other intellectual property rights in the material in this document belong to 4CAST Limited and/or 4CAST Inc (4CAST). The material shall not, under any circumstances, be reproduced or distributed in whole or part without the prior written consent of 4CAST. The material in this document is based upon information which 4CAST considers to be reliable and the analysis and opinion in the material represents the view of 4CAST at the time of transmission (unless stated otherwise). Such analysis and opinion is subject to change without notice. The material is intended for use by parties knowledgeable and experienced in the financial sector and is only one source amongst others to be considered in carrying on their business or activity. ACCORDINGLY 4CAST MAKES NO REPRESENTATION OR WARRANTY EXPRESS OR IMPLIED STATUTORY OR OTHERWISE (INCLUDING BUT NOT LIMITED TO) THE ACCURACY OF THE MATERIAL IN THIS DOCUMENT OR THE FITNESS FOR PURPOSE AND ALL SUCH REPRESENTATIONS AND WARRANTIES ARE HEREBY EXPRESSLY EXCLUDED. 4CAST does not give or purport to give investment advice. Any action taken by users on the basis of material in this document is entirely at their own risk. Independent investment advice should be sought where appropriate. 4CAST website may link to or be linked to other Internet sites. 4CAST does not accept responsibility for the content of such other sites. 4CAST's terms and conditions of business apply to all fee-paying subscribers and trial users.

www.danskeresearch.com



Strong uptrend



Weak uptrend or higher in range



Sideways or in range



Weak downtrend or lower in range



Strong downtrend

Danske Technical Update

Published - 5 February 2016 05:39

Powered by

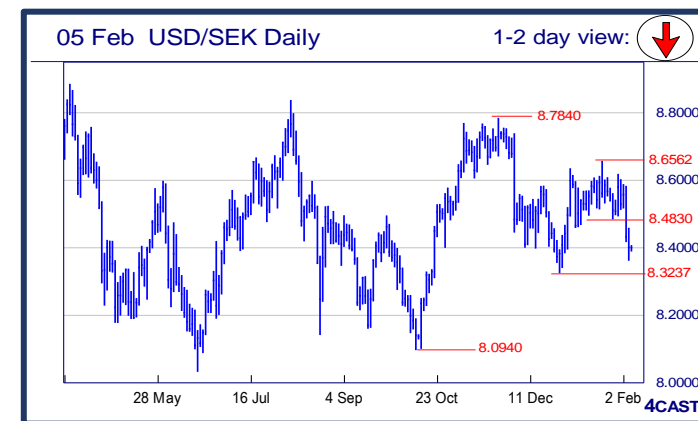
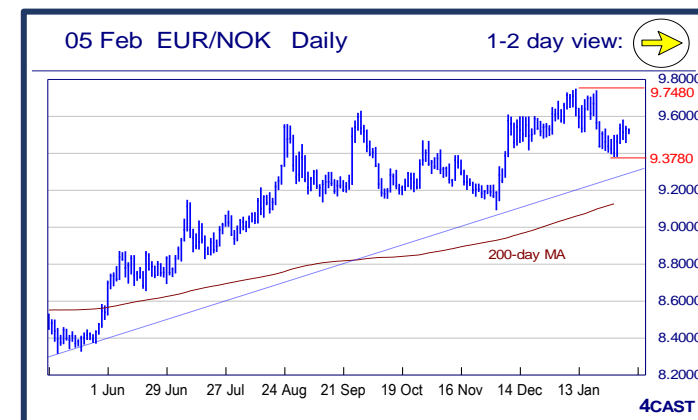


Danske Bank



NOK, SEK opening updates

	1 day view	Resistance	Support	4cast
EUR/NOK		9.7000 9.6820 9.6000 9.5805	9.4485 9.3780 9.3278 9.3000	View little changed from last session with corrective consolidation still in play and need push above 9.5805 resistance to garner stronger momentum to 9.6000 ahead of 9.6820. [W.T]
EUR/SEK		9.5488 9.5304 9.4498 9.4353	9.3794 9.3517 9.3250 9.2844	Positive tone appearing with prices closed above the 9.3982 strong hurdle last session and supported by the positive stance seen on daily tools and shifting focus higher to 9.4353 then 9.4498. [W.T]
USD/NOK		8.7565 8.7462 8.6000 8.5882	8.4465 8.4311 8.4000 8.3206	Another sharp decline last session below 8.4601 strong support, enforced by the negative stance seen on daily tools setting bears on firmer footing and eyes lower support at 8.4311 then 8.4000. [W.T]
USD/SEK		8.6180 8.5825 8.4830 8.4582	8.3605 8.3237 8.3000 8.2871	Decline extending and further enforced by the negative cross-over seen on daily MACD and targets the strong support at 8.3237 and need clearance to warrant further call on the downside. [W.T]



Strong uptrend



Weak uptrend or higher in range



Sideways or in range



Weak downtrend or lower in range



Strong downtrend

Copyright and other intellectual property rights in the material in this document belong to 4CAST Limited and/or 4CAST Inc (4CAST). The material shall not, under any circumstances, be reproduced or distributed in whole or part without the prior written consent of 4CAST. The material in this document is based upon information which 4CAST considers to be reliable and the analysis and opinion in the material represents the view of 4CAST at the time of transmission (unless stated otherwise). Such analysis and opinion is subject to change without notice. The material is intended for use by parties knowledgeable and experienced in the financial sector and is only one source amongst others to be considered in carrying on their business or activity. ACCORDINGLY 4CAST MAKES NO REPRESENTATION OR IMPLIED STATUTORY OR OTHERWISE (INCLUDING BUT NOT LIMITED TO) THE ACCURACY OF THE MATERIAL IN THIS DOCUMENT OR THE FITNESS FOR PURPOSE AND ALL SUCH REPRESENTATIONS AND WARRANTIES ARE HEREBY EXPRESSLY EXCLUDED. 4CAST does not give or purport to give investment advice. Any action taken by users on the basis of material in this document is entirely at their own risk. Independent investment advice should be sought where appropriate. 4CAST website may link to or be linked to other Internet sites. 4CAST does not accept responsibility for the content of such other sites. 4CAST's terms and conditions of business apply to all fee-paying subscribers and trial users.

www.danskeresearch.com