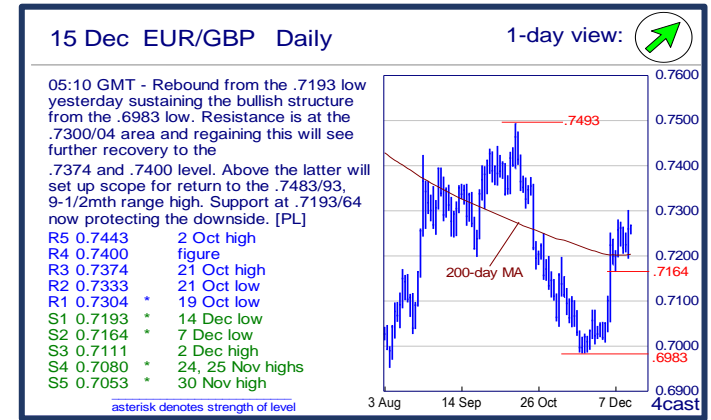
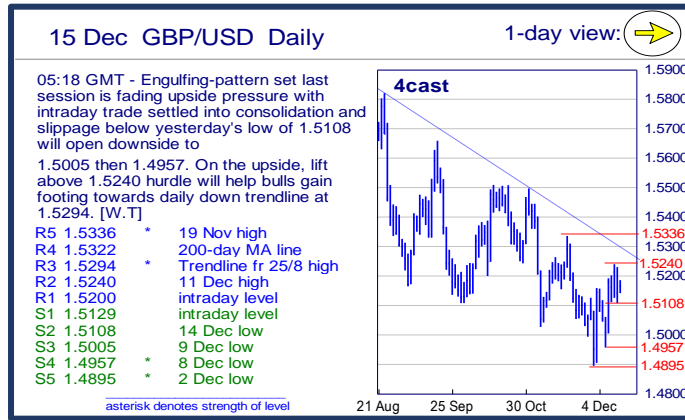
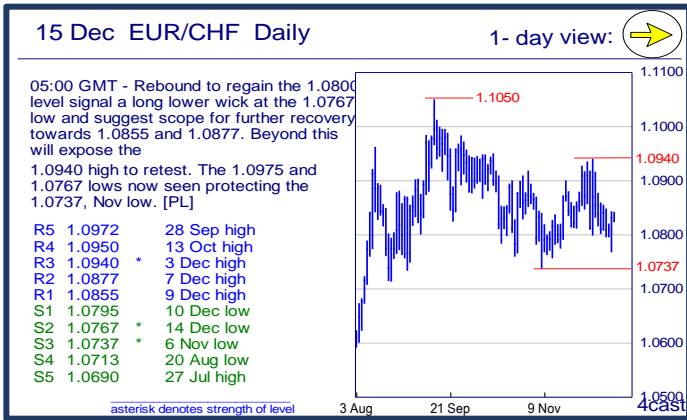
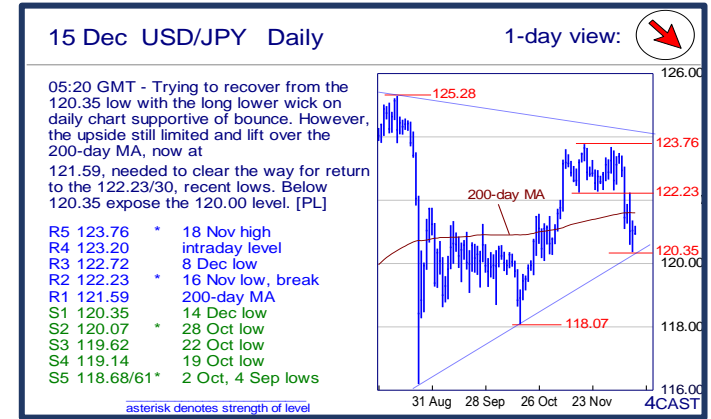
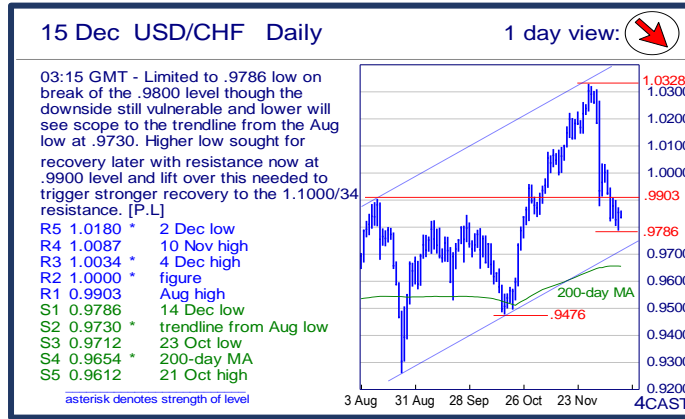
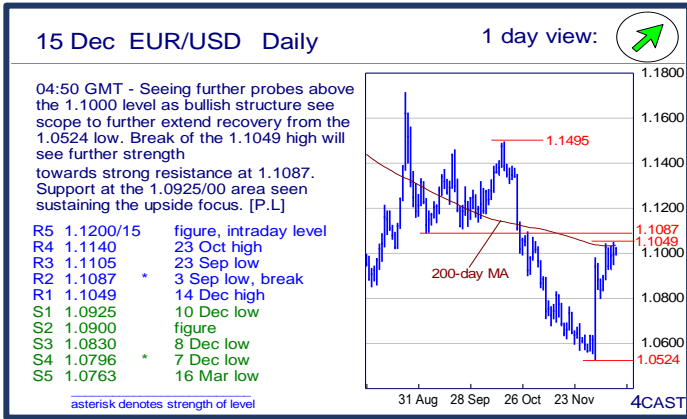


	Trends	Res 4	Res 3	Res 2	Res 1	Spot	Sup 1	Sup 2	Sup 3	Sup 4	MA20	MA50	MA200	RSI 9	
Scandies	EUR/SEK	→	9.4096	9.4000	9.3794	9.3526	9.3263	9.3055	9.2967	9.2415	9.2208	9.2737	9.3213	9.3499	60
	EUR/NOK	→	9.8100	9.7455	9.6280	9.6080	9.5319	9.4540	9.4260	9.4000	9.3280	9.3146	9.2929	8.9658	68
	USD/SEK	→	8.6445	8.6045	8.5775	8.5583	8.4627	8.4563	8.3990	8.3575	8.3287	8.6090	8.5236	8.4738	37
	USD/NOK	↘	8.8780	8.8595	8.8215	8.7485	8.6448	8.6100	8.5800	8.5500	8.4600	8.6433	8.4950	8.1246	51
	EUR/DKK	→	7.4660	7.4635	7.4630	7.4628	7.4615	7.4585	7.4545	7.4518	7.4515	7.4607	7.4607	7.4618	54
	NOK/SEK	→	1.0000	0.9977	0.9934	0.9878	0.9785	0.9727	0.9662	0.9624	0.9600	0.9947	1.0019	1.0428	38
Majors	EUR/USD	↗	1.1140	1.1105	1.1087	1.1049	1.1021	1.0925	1.0900	1.0830	1.0796	1.0773	1.0939	1.1034	66
	USD/JPY	↘	123.20	122.72	122.23	121.59	120.84	120.35	120.07	119.62	119.14	122.49	121.63	121.58	31
	EUR/GBP	↗	.7400	.7374	.7333	.7304	0.7264	.7193	.7164	.7111	.7080	0.7122	0.7177	0.7200	71
	GBP/USD	→	1.5322	1.5294	1.5240	1.5200	1.5165	1.5129	1.5108	1.5005	1.4957	1.5122	1.5236	1.5320	53
	USD/CHF	↘	1.0087	1.0034	1.0000	0.9903	0.9829	0.9786	0.9730	0.9712	0.9654	1.0067	0.9917	0.9651	33
	EUR/JPY	→	135.07	134.60	134.22	133.30	133.22	132.23	131.51	131.00	130.30	131.95	133.03	134.13	60
	EUR/CHF	→	1.0950	1.0940	1.0877	1.0855	1.0834	1.0795	1.0767	1.0737	1.0713	1.0844	1.0845	1.0647	50
	AUD/USD	→	.7445	.7385	.7335	.7283	0.7253	.7190	.7159	.7100	.7080	0.7242	0.7205	0.7442	52
	USD/CAD	↗	1.3875	1.3800	1.3790	1.3781	1.3703	1.3639	1.3600	1.3455	1.3400	1.3438	1.3252	1.2835	77
	NZD/USD	↗	.6897	.6885	.6866	.6813	0.6799	.6692	.6660	.6582	.6515	0.6632	0.6652	0.6879	67
	EUR/CAD	↗	1.5550	1.5430	1.5290	1.5160	1.5099	1.5000~	1.4800	1.4680	1.4500	1.4480	1.4493	1.4159	79
GBP/JPY	↘	185.39	185.06	184.59	183.98	183.3200	182.80	182.13	181.84	180.67	185.2210	185.3140	186.2714	33	
EM	USD/CNH	↗	6.6175	6.6025	6.5946	6.5614	6.5489	6.5285	6.4857	6.4607	6.4161	6.4582	6.4043	6.3027	79
	USD/ZAR	↘	16.200	16.100	16.025	15.355	15.1288	15.000	14.800	14.600	14.495	14.5307	14.0432	12.9095	60
	USD/BRL	→	4.0000	3.9660	3.9220	3.9210	3.8751	3.8200	3.7580	3.6920	3.6000	3.7877	3.8164	3.4391	63
	USD/MXN	↗	17.735	17.500	17.465	17.464	17.335	17.208	17.098	17.000	16.918	16.792	16.665	16.047	77
	EUR/PLN	↗	4.4215	4.3985	4.3740	4.3700	4.3613	4.3440	4.3400~	4.2995	4.2955	4.2979	4.2666	4.1693	79
	EUR/CZK	→	27.290	27.13~	27.120	27.055	27.012	26.97~	26.960	26.914	25.710	27.018	27.045	27.181	47
	EUR/HUF	↑	324.20	322.00	320.25	318.00	317.04	316.00	315.40	314.50~	313.10	312.86	311.96	309.12	71
	EUR/TRY	↗	3.4295	3.3760	3.3465	3.3105	3.2908	3.2325	3.1520	3.1175	3.0775	3.1286	3.1712	3.0768	78
	USD/PLN	→	4.0581	4.02~	3.9950~	3.9800	3.9592	3.9325	3.9282	3.8981	3.86~	3.9899	3.9031	3.7809	44
USD/RUB	↑	72.575	71.783	71.620	71.315	70.29	68.830	67.946	67.05~	65.682	67.31	64.95	59.95	72	
Other Markets	S&P 500 Futures	→	2102	2097	2044	2026	2022	1991	1975	1950	1900	2066	2054	2058	37
	DAX Futures	→	11433	11324	10995	10630	10354	10128	10052	10000	9885	10942	10684	11069	26
	US 10y Futures	→	129-18+	128-00	127-29+	127-10	127.09	126-12+	126-03+	126-00	125-09	126.95	127.52	127.62	51
	Bund Futures	→	161.50	161.00	160.66	159.45	158.73	158.13	157.74	156.42	155.67	157.86	157.14	155.50	60
	WTI Oil Futures	↘	40.41	40.00	39.00	36.64	36.20	34.53	34.25	34.00	33.55	39.67	43.21	49.37	28

	Trends	Res 4	Res 3	Res 2	Res 1	Spot	Sup 1	Sup 2	Sup 3	Sup 4	MA20	MA 50	MA 200	RSI 9	
Scandies	EUR/SEK	→	9.4096 2 Nov high	9.4000 figure	9.3794 9 Nov high	9.3526 intraday level	9.3263	9.3055 25 Nov high	9.2967 11 Dec low	9.2415 10 Dec low	9.2208 8 Dec low	9.2737	9.3213	9.3499	60
	EUR/NOK	→	9.8100 24 Dec 08 low	9.7455 2 Jan 09 high	9.6280 Sep YTD high	9.6080 8 Dec high	9.5319	9.4540 14 Dec low	9.4260 10 Dec low	9.4000 figure	9.3280 3 Dec high	9.3146	9.2929	8.9658	68
	USD/SEK	→	8.6445 19 Nov low	8.6045 12 Nov low	8.5775 29 Oct high	8.5583 7 Dec high	8.4627	8.4563 11 Dec low	8.3990 9 Dec low	8.3575 618 retrace	8.3287 19 Oct high	8.6090	8.5236	8.4738	37
	USD/NOK	↘	8.8780 12 Mar 02 high	8.8595 29 Mar 02 high	8.8215 8 Dec high	8.7485 14 Dec high	8.6448	8.6100 10 Dec low	8.5800 19 Nov low	8.5500 4 Dec high	8.4600 4 Dec low	8.6433	8.4950	8.1246	51
	EUR/DKK	→	7.4660 Aug high	7.4635 Oct high	7.4630 mid-Nov highs	7.4628 Fri high	7.4615	7.4585 last week low	7.4545 Oct low	7.4518 Jul low	7.4515 May low	7.4607	7.4607	7.4618	54
	NOK/SEK	→	1.0000 figure	0.9977 7 Dec high	0.9934 12 Nov low	0.9878 8 Dec high	0.9785	0.9727 11 Dec low	0.9662 9 Dec low	0.9624 8 Dec low	0.9600 figure	0.9947	1.0019	1.0428	38
Majors	EUR/USD	↗	1.1140 23 Oct high	1.1105 23 Sep low	1.1087 3 Sep low, break	1.1049 14 Dec high	1.1021	1.0925 10 Dec low	1.0900 figure	1.0830 8 Dec low	1.0796 7 Dec low	1.0773	1.0939	1.1034	66
	USD/JPY	↘	123.20 intraday level	122.72 8 Dec low	122.23 16 Nov low, break	121.59 200-day MA	120.84	120.35 14 Dec low	120.07 28 Oct low	119.62 22 Oct low	119.14 19 Oct low	122.49	121.63	121.58	31
	EUR/GBP	↗	.7400 figure	.7374 21 Oct high	.7333 21 Oct low	.7304 19 Oct low	0.7264	.7193 14 Dec low	.7164 7 Dec low	.7111 2 Dec high	.7080 24, 25 Nov highs	0.7122	0.7177	0.7200	71
	GBP/USD	→	1.5322 200-day MA line	1.5294 Trendline fr 25/8 l	1.5240 11 Dec high	1.5200 intraday level	1.5165	1.5129 intraday level	1.5108 14 Dec low	1.5005 9 Dec low	1.4957 8 Dec low	1.5122	1.5236	1.5320	53
	USD/CHF	↘	1.0087 10 Nov high	1.0034 4 Dec high	1.0000 figure	0.9903 Aug high	0.9829	0.9786 14 Dec low	0.9730 trendline from Aug	0.9712 23 Oct low	0.9654 200-day MA	1.0067	0.9917	0.9651	33
	EUR/JPY	→	135.07 19 Oct low	134.60 4 Dec high	134.22 9 Dec high	133.30 7 Dec low	133.22	132.23 Sep low	131.51 6 Nov low	131.00 figure	130.30 30 Nov high	131.95	133.03	134.13	60
	EUR/CHF	→	1.0950 13 Oct high	1.0940 3 Dec high	1.0877 7 Dec high	1.0855 9 Dec high	1.0834	1.0795 10 Dec low	1.0767 14 Dec low	1.0737 6 Nov low	1.0713 20 Aug low	1.0844	1.0845	1.0647	50
	AUD/USD	→	.7445 200-day MA	.7385 4 Dec high	.7335 10 Dec high	.7283 25 Nov high	0.7253	.7190 intraday level	.7159 13 Nov high, break	.7100 figure	.7080 trendline from Sep	0.7242	0.7205	0.7442	52
	USD/CAD	↗	1.3875 projection	1.3800 figure	1.3790 projection	1.3781 14 Dec high	1.3703	1.3639 10 Dec high	1.3600 figure	1.3455 29 Sep high	1.3400 break level	1.3438	1.3252	1.2835	77
	NZD/USD	↗	.6897 15 Oct high	.6885 t/line from Jul 14 t	.6866 23 Oct high	.6813 27 Oct high	0.6799	.6692 14 Dec low	.6660 intraday level	.6582 9 Dec low	.6515 30 Nov low	0.6632	0.6652	0.6879	67
	EUR/CAD	↗	1.5550 24-Aug YTD high	1.5430 26-Aug high	1.5290 May 14 high	1.5160 29-Sep high	1.5099	1.5000~ 9-Dec high	1.4800 S/R level	1.4680 7-Dec high	1.4500 7-Dec low	1.4480	1.4493	1.4159	79
GBP/JPY	↘	185.39 9 Dec high	185.06 11 Dec high	184.59 14 Dec high	183.98 2 Dec low	183.32	182.80 intraday level	182.13 14 Dec low	181.84 13 Oct low	180.67 2 Oct low	185.22	185.31	186.27	33	
EM	USD/CNH	↗	6.6175 30 Dec 2010 high	6.6025 6 Jan 2011 high	6.5946 12 Aug high	6.5614 11 Dec high	6.5489	6.5285 14 Dec low	6.4857 9 Dec low	6.4607 30 Nov high, break	6.4161 30 Nov low	6.4582	6.4043	6.3027	79
	USD/ZAR	↘	16.200 figure	16.100 figure	16.025 11-Dec YTD high	15.355 11-Dec low	15.129	15.000 figure	14.800 figure	14.600 spike accel	14.495 1-Dec high	14.531	14.043	12.910	60
	USD/BRL	→	4.0000 figure	3.9660 21 Oct high	3.9220 30 Nov high	3.9210 intraday high	3.8751	3.8200 break level	3.7580 100-day MA	3.6920 24 Nov low	3.6000 break level	3.7877	3.8164	3.4391	63
	USD/MXN	↗	17.735 projection	17.500 projection	17.465 trend acr Aug, Sep	17.464 14 Dec high	17.335	17.208 10 Dec high	17.098 09 Dec high	17.000 figure	16.918 09 Nov high	16.792	16.665	16.047	77
	EUR/PLN	↗	4.4215 4-Jun-12 high	4.3985 26-Dec 14 high	4.3740 29-Dec 14 high	4.3700 Mon am high	4.3613	4.3440 Jan-15 high	4.3400~ 3-Dec hi/ Fri low	4.2995 7-Dec low	4.2955 28-Oct high	4.2979	4.2666	4.1693	79
	EUR/CZK	→	27.290 25-Sep high	27.13~ downtrend fr April	27.120 Nov high	27.055 last week high	27.012	26.97~ fr Sep lows	26.960 11-Dec YTD low	26.914 8-Nov-13 low	25.710 7-Nov-13 low	27.018	27.045	27.181	47
	EUR/HUF	↑	324.20 Jan 2012 high	322.00 figure	320.25 Jan highs blw spik	318.00 Jul high	317.04	316.00 Fri low	315.40 6-Nov high	314.50~ Jul-Dec apex brk	313.10 9-Dec low	312.86	311.96	309.12	71
	EUR/TRY	↗	3.4295 2-Oct high	3.3760 14-Oct high	3.3465 15-Oct high	3.3105 21-Oct high	3.2908	3.2325 30-Oct high	3.1520 8-Dec low	3.1175 27-Nov high	3.0775 2-Dec high	3.1286	3.1712	3.0768	78
	USD/PLN	→	4.0581 03 Dec high	4.02~ start Dec lows	3.9950~ 7-9-Dec highs	3.9800 Thur, Fri pm highs	3.9592	3.9325 9-Dec low	3.9282 12-Nov low	3.8981 50-day MA	3.86~ Jul, Aug highs	3.9899	3.9031	3.7809	44
USD/RUB	↑	72.575 17-Dec-14 high	71.783 Jan' YTD high	71.620 Aug high	71.315 14-Dec high	70.29	68.830 14-Dec low	67.946 16-Nov high	67.05~ earlier Nov highs	65.682 30-Nov low	67.31	64.95	59.95	72	
Other Markets	S&P 500 Futures	→	2102 03 Nov high	2097 02 Dec high	2044 50-day MA	2026 break level	2022	1991 16 Nov low	1975 14 Oct low	1950 break level	1900 figure	2066	2054	2058	37
	DAX Futures	→	11433 30 Nov high	11324 3-Dec high	10995 7-Dec high	10630 04 Dec low	10354	10128 14 Dec low	10052 16 Oct low	10000 figure	9885 14 Oct low	10942	10684	11069	26
	US 10y Futures	→	129-18+ 02 Oct high	128-00 figure	127-29+ break level	127-10 11 Dec high	127.09	126-12+ 14 Dec low	126-03+ 09 Dec low	126-00 figure	125-09 04 Dec low	126.95	127.52	127.62	51
	Bund Futures	→	161.50 figure	161.00 figure	160.66 27-Nov high	159.45 1-Dec low	158.73	158.13 9-Dec low	157.74 4-Dec high	156.42 4-Dec low	155.67 16-Sep high	157.86	157.14	155.50	60
	WTI Oil Futures	↘	40.41 23 Nov low	40.00 figure	39.00 figure	36.64 08 Dec low	36.20	34.53 14 Dec low	34.25 projection	34.00 figure	33.55 Feb '09 contin lo	39.67	43.21	49.37	28

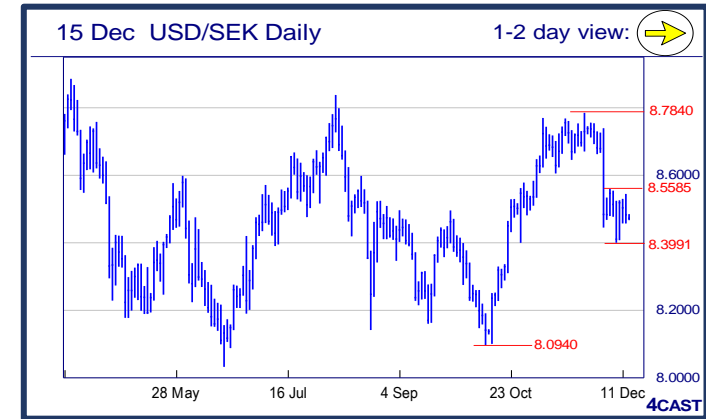
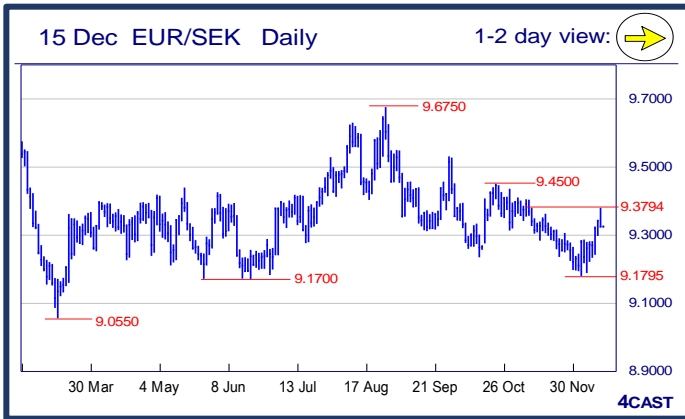
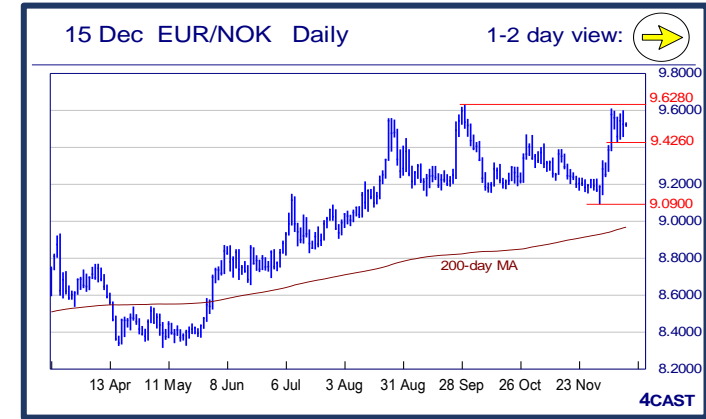


Strong uptrend    Weak uptrend or higher in range    Sideways or in range    Weak downtrend or lower in range    Strong downtrend



### NOK, SEK opening updates

	1 day view	Resistance	Support	4cast
EUR/NOK	→	9.8100	9.4540	Choppy in consolidation below the 9.6080 high of last week though hold above the 9.4260 support seen sustaining the bullish structure. Break needed to swing focus lower below the 9.4000 level towards 9.3280 and 9.2370. [P.L]
		9.7455	9.4260	
		9.6280	9.4000	
		9.6080	9.3280	
EUR/SEK	→	9.4096	9.3055	Corrective upmove extended to 9.3794 resistance last session but found the latter a hard nut to crack and strong reaction from the latter towards closing in the appearance of a long upper shadow is taking pressure of the upside. [W.T]
		9.4000	9.2967	
		9.3794	9.2415	
		9.3526	9.2208	
USD/NOK	↘	8.8780	8.6100	Rejection from the 8.7485 high keep the 8.8215 high out of reach and see scope for retest of the 8.6100 support. Below this will expose the 8.5800 support to retest and see risk for setback to the 8.4600 low. [P.L]
		8.8595	8.5800	
		8.8215	8.5500	
		8.7485	8.4600	
USD/SEK	→	8.6445	8.4563	Corrective upmove failed to gain towards strong hurdle at 8.5883 last session and lower closing in the appearance of a High-wave candle is setting prices lower in consolidation with strong support seen at 8.3990. [W.T]
		8.6045	8.3990	
		8.5775	8.3575	
		8.5583	8.3287	



↑ Strong uptrend    
 ↗ Weak uptrend or higher in range    
 → Sideways or in range    
 ↘ Weak downtrend or lower in range    
 ↓ Strong downtrend