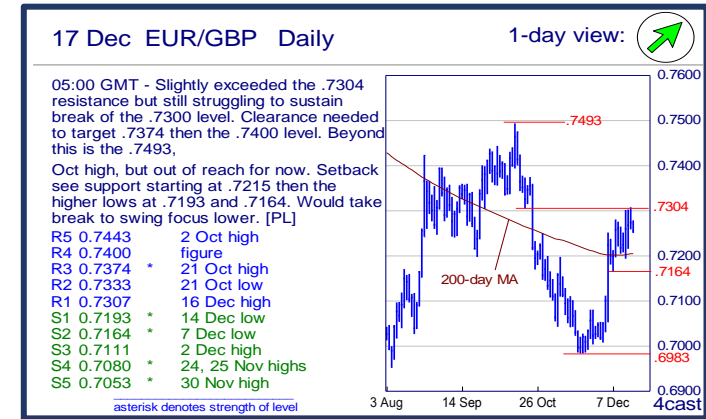
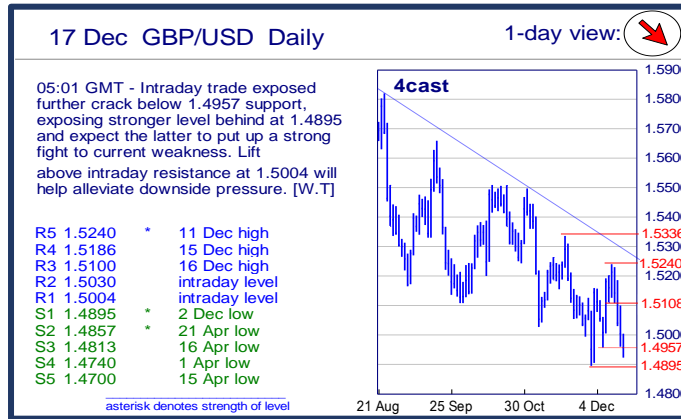
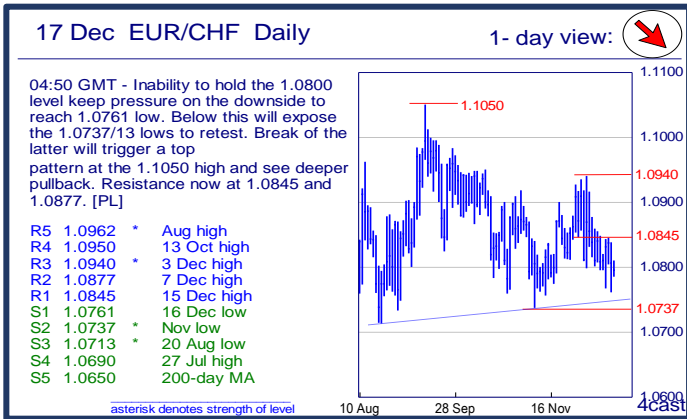
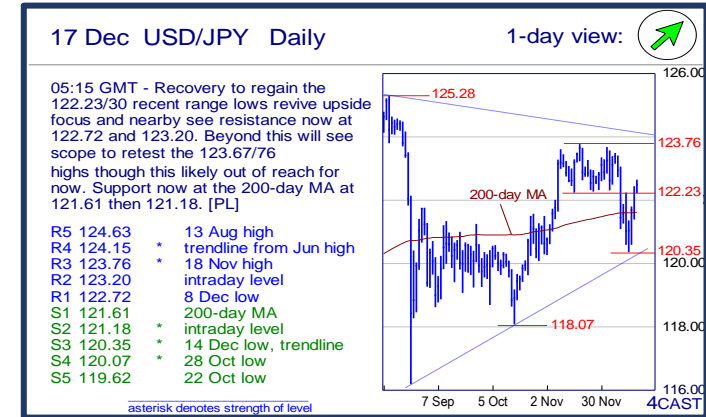
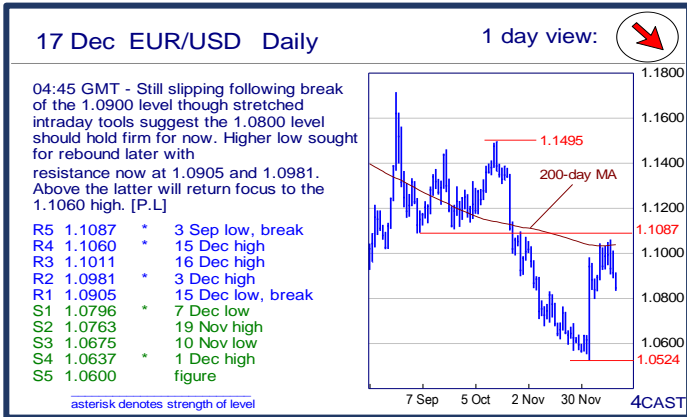
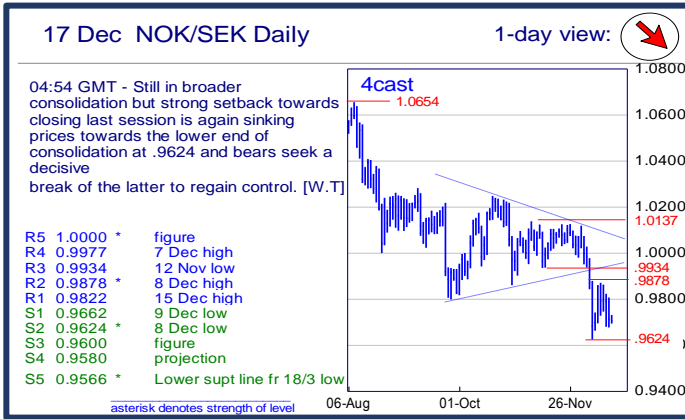


	Trends	Res 4	Res 3	Res 2	Res 1	Spot	Sup 1	Sup 2	Sup 3	Sup 4	MA20	MA50	MA200	RSI 9	
Scandies	EUR/SEK	↘	9.4000	9.3794	9.3505	9.3357	9.2755	9.2573	9.2415	9.2208	9.1880	9.2699	9.3205	9.3512	47
	EUR/NOK	↗	9.8100	9.7455	9.6280	9.6080	9.5602	9.4540	9.4260	9.4000	9.3280	9.3455	9.3065	8.9749	69
	USD/SEK	→	8.6445	8.6045	8.5775	8.5583	8.5534	8.4749	8.4430	8.3967	8.3575	8.5942	8.5358	8.4733	50
	USD/NOK	↗	8.9000	8.8780	8.8595	8.8215	8.8133	8.7000	8.6710	8.6100	8.5800	8.6608	8.5204	8.1311	65
	EUR/DKK	↗	7.47~	7.4685	7.4660	7.4640	7.4614	7.4598	7.4585	7.4565	7.4545	7.4609	7.4607	7.4619	51
	NOK/SEK	↘	0.9977	0.9934	0.9878	0.9822	0.9691	0.9662	0.9624	0.9600	0.9580	0.9910	1.0004	1.0420	32
Majors	EUR/USD	↘	1.1060	1.1011	1.0981	1.0905	1.0843	1.0796	1.0763	1.0675	1.0637	1.0786	1.0922	1.1036	48
	USD/JPY	↗	124.15	123.76	123.20	122.72	122.48	121.61	121.18	120.35	120.07	122.44	121.74	121.59	54
	EUR/GBP	↗	.7400	.7374	.7333	.7307	0.7251	.7193	.7164	.7111	.7080	0.7148	0.7174	0.7202	65
	GBP/USD	↘	1.5186	1.5100	1.5030	1.5004	1.4951	1.4895	1.4857	1.4813	1.4740	1.5086	1.5219	1.5320	37
	USD/CHF	↗	1.0180	1.0087	1.0034	1.0000	0.9956	0.9865	0.9786	0.9730	0.9712	1.0048	0.9927	0.9650	48
	EUR/JPY	↗	135.07	134.60	134.22	133.78	132.82	132.71	132.44	132.23	131.51	132.06	132.95	134.18	52
	EUR/CHF	↘	1.0950	1.0940	1.0877	1.0845	1.0799	1.0761	1.0737	1.0713	1.0690	1.0838	1.0840	1.0648	42
	AUD/USD	→	.7440	.7385	.7335	.7283	0.7179	.7159	.7100	.7085	.7017	0.7245	0.7203	0.7437	44
	USD/CAD	↗	1.3950	1.3900	1.3875	1.3847	1.3794	1.3639	1.3600	1.3455	1.3400	1.3489	1.3282	1.2846	85
	NZD/USD	↗	.6897	.6877	.6866	.6834	0.6731	.6717	.6692	.6660	.6600	0.6656	0.6657	0.6873	56
	EUR/CAD	→	1.5550	1.5430	1.5290	1.5200	1.4959	1.4800	1.4680	1.4500	1.4380	1.4553	1.4504	1.4174	66
GBP/JPY	→	185.06	184.59	184.23	183.74	183.1400	182.52	182.13	181.84	180.67	184.7155	185.2788	186.2932	33	
EM	USD/CNH	→	6.6175	6.6025	6.5946	6.5614	6.5517	6.5230	6.5142	6.4857	6.4590	6.4703	6.4118	6.3052	72
	USD/ZAR	↘	16.200	16.100	16.025	15.355	15.0093	14.800	14.600	14.495	14.240	14.6084	14.1029	12.9354	57
	USD/BRL	→	4.0000	3.9800	3.9660	3.9570	3.8932	3.8720	3.8200	3.7700	3.6920	3.8022	3.8186	3.4465	65
	USD/MXN	↘	17.735	17.500	17.465	17.191	17.010	16.918	16.800	16.665	16.319	16.812	16.678	16.062	55
	EUR/PLN	↘	4.3985	4.3740	4.3700	4.3360	4.2890	4.2630	4.2350	4.2245	4.2073	4.2999	4.2684	4.1707	42
	EUR/CZK	→	27.290	27.13~	27.120	27.055	26.997	26.97~	26.960	26.914	25.710	27.017	27.040	27.179	42
	EUR/HUF	↗	324.20	322.00	320.25	318.00	315.52	315.40	314.50~	313.10	311.00	313.34	312.09	309.23	59
	EUR/TRY	↘	3.3760	3.3465	3.3105	3.2560	3.1959	3.1520	3.1175	3.0775	3.0320	3.1407	3.1668	3.0810	55
	USD/PLN	↘	4.0581	4.02~	3.9950~	3.9687	3.9585	3.9282	3.9055	3.8975	3.86~	3.9871	3.9107	3.7814	46
USD/RUB	↗	72.58	71.78	71.620	71.20	70.51	69.51	68.19	68.14	67.05~	67.87	65.30	60.04	70	
Other Markets	S&P 500 Futures	↗	2110	2102	2097	2075	2066	2031	2010	1983	1975	2068	2058	2058	53
	DAX Futures	→	11433	11324	10995	10650	10463	10119	10052	10000	9885	10881	10701	11058	40
	US 10y Futures	→	128-00	127-29+	127-10	126-30	126.53	126-00	125-26+	125-25	125-09	126.91	127.42	127.61	44
	Bund Futures	↘	161.00	160.66	159.36	158.13	157.32	156.42	155.67	155.11	154.54	157.85	157.19	155.48	45
	WTI Oil Futures	→	40.00	39.00	37.88	37.35	35.42	34.53	34.00	33.55	33.20	39.20	42.72	49.23	30

	Trends	Res 4	Res 3	Res 2	Res 1	Spot	Sup 1	Sup 2	Sup 3	Sup 4	MA20	MA 50	MA 200	RSI 9	
Scandies	EUR/SEK	↘	9.4000 figure	9.3794 9 Nov high	9.3505 200-day MA	9.3357 16 Dec high	9.2755	9.2573 15 Dec low	9.2415 10 Dec low	9.2208 8 Dec low	9.1880 7 Dec low	9.2699	9.3205	9.3512	47
	EUR/NOK	↗	9.8100 24 Dec 08 low	9.7455 2 Jan 09 high	9.6280 Sep YTD high	9.6080 8 Dec high	9.5602	9.4540 14 Dec low	9.4260 10 Dec low	9.4000 figure	9.3280 3 Dec high	9.3455	9.3065	8.9749	69
	USD/SEK	→	8.6445 19 Nov low	8.6045 12 Nov low	8.5775 29 Oct high	8.5583 7 Dec high	8.5534	8.4749 200-day MA	8.4430 16 Dec low	8.3967 15 Dec low	8.3575 16 Dec retrace	8.5942	8.5358	8.4733	50
	USD/NOK	↗	8.9000 figure	8.8780 12 Mar 02 high	8.8595 29 Mar 02 high	8.8215 8 Dec high	8.8133	8.7000 figure	8.6710 16 Dec low	8.6100 10 Dec low	8.5800 19 Nov low	8.6608	8.5204	8.1311	65
	EUR/DKK	↗	7.47~ early Apr lows	7.4685 May high	7.4660 Aug high	7.4640 Tues high	7.4614	7.4598 Tues low	7.4585 last week low	7.4565 Nov low	7.4545 Oct low	7.4609	7.4607	7.4619	51
	NOK/SEK	↘	0.9977 7 Dec high	0.9934 12 Nov low	0.9878 8 Dec high	0.9822 15 Dec high	0.9691	0.9662 9 Dec low	0.9624 8 Dec low	0.9600 figure	0.9580 projection	0.9910	1.0004	1.0420	32
Majors	EUR/USD	↘	1.1060 15 Dec high	1.1011 16 Dec high	1.0981 3 Dec high	1.0905 15 Dec low, break	1.0843	1.0796 7 Dec low	1.0763 19 Nov high	1.0675 10 Nov low	1.0637 1 Dec high	1.0786	1.0922	1.1036	48
	USD/JPY	↗	124.15 trendline from Jun	123.76 18 Nov high	123.20 intraday level	122.72 8 Dec low	122.48	121.61 200-day MA	121.18 intraday level	120.35 14 Dec low, trendl	120.07 28 Oct low	122.44	121.74	121.59	54
	EUR/GBP	↗	.7400 figure	.7374 21 Oct high	.7333 21 Oct low	.7307 16 Dec high	0.7251	.7193 14 Dec low	.7164 7 Dec low	.7111 2 Dec high	.7080 24, 25 Nov highs	0.7148	0.7174	0.7202	65
	GBP/USD	↘	1.5186 15 Dec high	1.5100 16 Dec high	1.5030 intraday level	1.5004 intraday level	1.4951	1.4895 2 Dec low	1.4857 21 Apr low	1.4813 16 Apr low	1.4740 1 Apr low	1.5086	1.5219	1.5320	37
	USD/CHF	↗	1.0180 2 Dec low	1.0087 10 Nov high	1.0034 4 Dec high	1.0000 figure	0.9956	0.9865 intraday level	0.9786 14 Dec low	0.9730 trendline from Aug	0.9712 23 Oct low	1.0048	0.9927	0.9650	48
	EUR/JPY	↗	135.07 19 Oct low	134.60 4 Dec high	134.22 9 Dec high	133.78 11, 16 Dec highs	132.82	132.71 15 Dec low	132.44 14 Dec low	132.23 Sep low	131.51 6 Nov low	132.06	132.95	134.18	52
	EUR/CHF	↘	1.0950 13 Oct high	1.0940 3 Dec high	1.0877 7 Dec high	1.0845 15 Dec high	1.0799	1.0761 16 Dec low	1.0737 Nov low	1.0713 20 Aug low	1.0690 27 Jul high	1.0838	1.0840	1.0648	42
	AUD/USD	→	.7440 200-day MA	.7385 4 Dec high	.7335 10 Dec high	.7283 25 Nov high	0.7179	.7159 13 Nov high, break	.7100 figure	.7085 trendline from Sep	.7017 9, 10 Oct lows	0.7245	0.7203	0.7437	44
	USD/CAD	↗	1.3950 projection	1.3900 figure	1.3875 projection	1.3847 intraday high	1.3794	1.3639 10 Dec high	1.3600 figure	1.3455 29 Sep high	1.3400 break level	1.3489	1.3282	1.2846	85
	NZD/USD	↗	.6897 Oct high	.6877 200-day MA, trer	.6866 23 Oct high	.6834 16 Dec high	0.6731	.6717 16 Dec low	.6692 14 Dec low	.6660 intraday level	.6600 figure	0.6656	0.6657	0.6873	56
	EUR/CAD	→	1.5550 24-Aug YTD high	1.5430 26-Aug high	1.5290 May 14 high	1.5200 14-Dec high	1.4959	1.4800 S/R level	1.4680 7-Dec high	1.4500 7-Dec low	1.4380 12-Nov high	1.4553	1.4504	1.4174	66
GBP/JPY	→	185.06 11 Dec high	184.59 14 Dec high	184.23 16 Dec high	183.74 16 Dec high	183.14	182.52 16 Dec low	182.13 14 Dec low	181.84 13 Oct low	180.67 2 Oct low	184.72	185.28	186.29	33	
EM	USD/CNH	→	6.6175 30 Dec 2010 high	6.6025 6 Jan 2011 high	6.5946 12 Aug high	6.5614 11 Dec high	6.5517	6.5230 intraday level	6.5142 16 Dec low	6.4857 9 Dec low	6.4590 Uptrend line fr 30	6.4703	6.4118	6.3052	72
	USD/ZAR	↘	16.200 figure	16.100 figure	16.025 11-Dec YTD high	15.355 11-Dec low	15.009	14.800 figure	14.600 spike accel	14.495 1-Dec high	14.240 3-Dec low	14.608	14.103	12.935	57
	USD/BRL	→	4.0000 figure	3.9800 break level	3.9660 21 Oct high	3.9570 intraday high	3.8932	3.8720 16 Dec low	3.8200 break level	3.7700 100-day MA	3.6920 24 Nov low	3.8022	3.8186	3.4465	65
	USD/MXN	↘	17.735 projection	17.500 projection	17.465 14 Dec high	17.191 26 Dec high	17.010	16.918 09 Nov high	16.800 break level	16.665 50-day MA	16.319 15 Oct low	16.812	16.678	16.062	55
	EUR/PLN	↘	4.3985 26-Dec 14 high	4.3740 29-Dec 14 high	4.3700 14, 15-Dec highs	4.3360 Wed high	4.2890	4.2630 3-Dec low	4.2350 20-Nov low	4.2245 16 Nov low	4.2073 11 Nov low	4.2999	4.2684	4.1707	42
	EUR/CZK	→	27.290 25-Sep high	27.13~ downtrend fr April	27.120 Nov high	27.055 last week high	26.997	26.97~ 1r Sep lows	26.960 11-Dec YTD low	26.914 8-Nov-13 low	25.710 7-Nov-13 low	27.017	27.040	27.179	42
	EUR/HUF	↗	324.20 Jan 2012 high	322.00 figure	320.25 Jan highs blw spik	318.00 Jul high, 11-Dec hi	315.52	315.40 6-Nov high	314.50~ Jul-Dec apex brk	313.10 9-Dec low	311.00 7-Dec low	313.34	312.09	309.23	59
	EUR/TRY	↘	3.3760 14-Oct high	3.3465 15-Oct high	3.3105 21-Oct high	3.2560 16 Dec high	3.1959	3.1520 8-Dec low	3.1175 27-Nov high	3.0775 2-Dec high	3.0320 23-Nov high	3.1407	3.1668	3.0810	55
	USD/PLN	↘	4.0581 03 Dec high	4.02~ start Dec lows	3.9950~ 7-9-Dec highs	3.9687 16 Dec high	3.9585	3.9282 12-Nov low	3.9055 50-day MA	3.8975 06 Nov low	3.86~ Jul, Aug highs	3.9871	3.9107	3.7814	46
USD/RUB	↗	72.58 17-Dec-14 high	71.78 Jan'1 YTD high	71.620 Aug high	71.20 14-Dec high	70.51	69.51 16 Dec low	68.19 10-Dec low	68.14 last week low	67.05~ earlier Nov highs	67.87	65.30	60.04	70	
Other Markets	S&P 500 Futures	↗	2110 Jul high	2102 03 Nov high	2097 02 Dec high	2075 break level	2066	2031 16 Dec low	2010 15 Dec low	1983 14 Dec low	1975 14 Oct low	2068	2058	2058	53
	DAX Futures	→	11433 30 Nov high	11324 3-Dec high	10995 7-Dec high	10650 16 Dec high	10463	10119 14 Dec low	10052 16 Oct low	10000 figure	9885 14 Oct low	10881	10701	11058	40
	US 10y Futures	→	128-00 figure	127-29+ break level	127-10 11 Dec high	126-30 50-day MA	126.53	126-00 figure	125-26+ intraday low	125-25 07 Dec low	125-09 04 Dec low	126.91	127.42	127.61	44
	Bund Futures	↘	161.00 figure	160.66 27-Nov high	159.36 11-Dec high	158.13 9-Dec low	157.32	156.42 4-Dec low	155.67 16-Sep high	155.11 16-Sep low	154.54 1-Dec low	157.85	157.19	155.48	45
	WTI Oil Futures	→	40.00 figure	39.00 09 Dec high	37.88 15 Dec high	37.35 16 Dec high	35.42	34.53 14 Dec low	34.00 figure	33.55 Feb '09 contin low	33.20 Jan '09 contin low	39.20	42.72	49.23	30

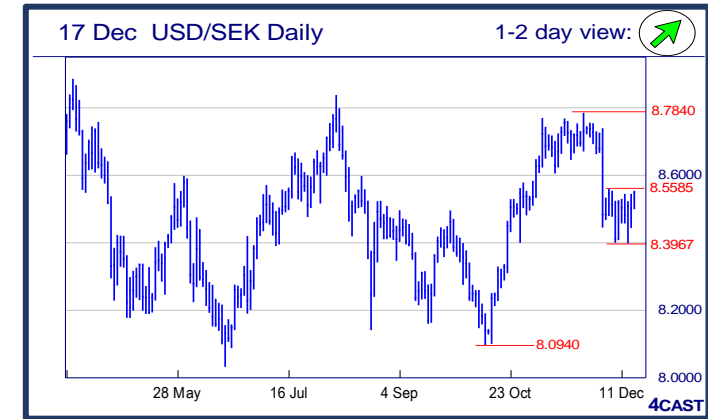
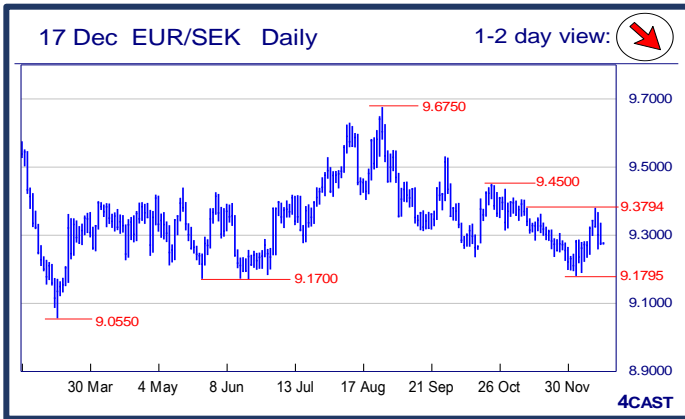
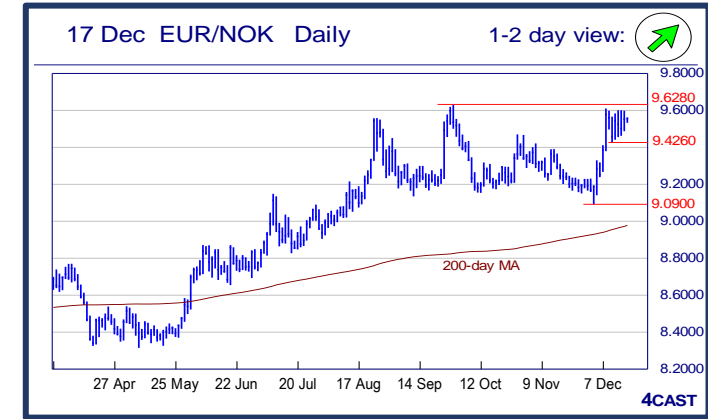


Strong uptrend  
 Weak uptrend or higher in range  
 Sideways or in range  
 Weak downtrend or lower in range  
 Strong downtrend



### NOK, SEK opening updates

	1 day view	Resistance	Support	4cast
EUR/NOK		9.8100 9.7455 9.6280 9.6080	9.4540 9.4260 9.4000 9.3280	Ascending triangle keeping pressure on the upside and break of the 9.6080 high will resume the rally from the 9.0900 low to retest 9.6280 high and beyond. Would take break of the 9.4260 support to swing focus lower. [P.L]
EUR/SEK		9.4000 9.3794 9.3505 9.3357	9.2573 9.2415 9.2208 9.1880	Reversal from this week's high of 9.3794 with the negative stance of daily technical tools helping to retain downside pressure and slippage below 6.2573 support will expose deeper setback to 9.2415/2208. [W.T]
USD/NOK		8.9000 8.8780 8.8595 8.8215	8.7000 8.6710 8.6100 8.5800	Rally to break the 8.7485 high shift focus to the 8.8215 high of last week. Break here will resume the underlying bull trend and see extension to target 8.8595 and 8.8780. Support now at 8.7000 figure and 8.6100 protecting the downside. [P.L]
USD/SEK		8.6445 8.6045 8.5775 8.5583	8.4749 8.4430 8.3967 8.3575	Corrective gain now approaching the consolidative high at 8.5583 and would expect the latter to put up a strong fight to current rebound as the preceding downmove from 8.7839 high is still dominating. [W.T]



Strong uptrend   
 Weak uptrend or higher in range   
 Sideways or in range   
 Weak downtrend or lower in range   
 Strong downtrend