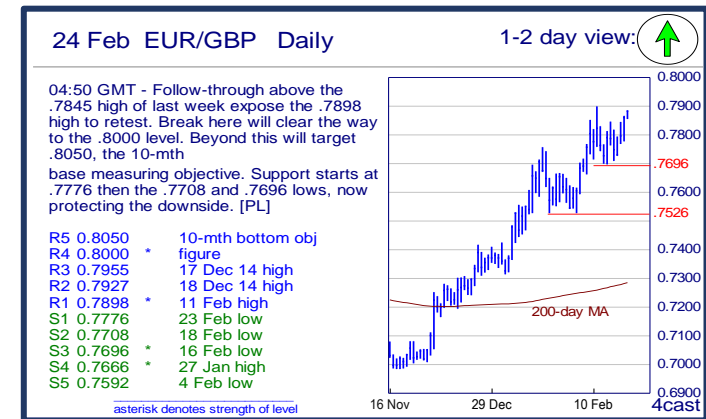
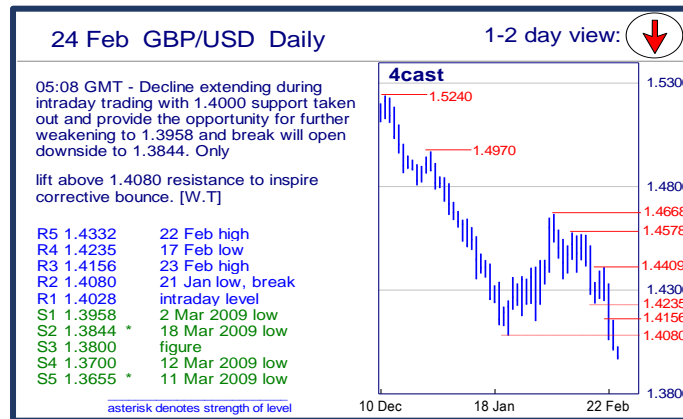
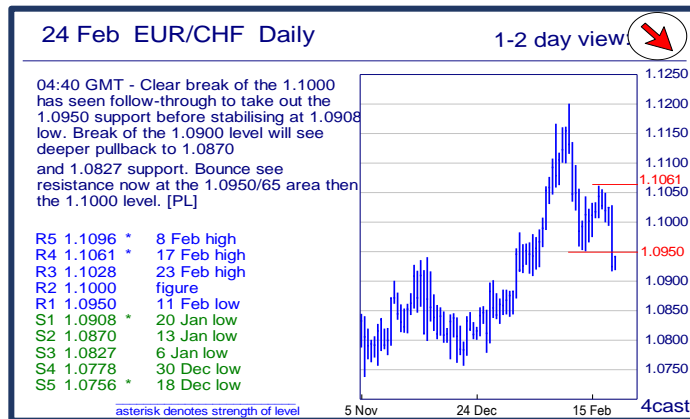
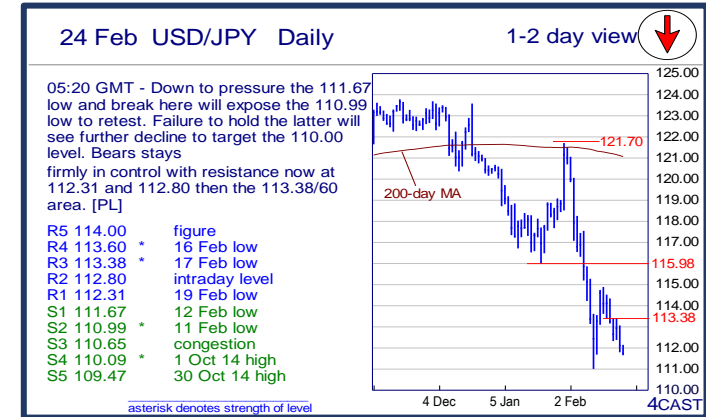
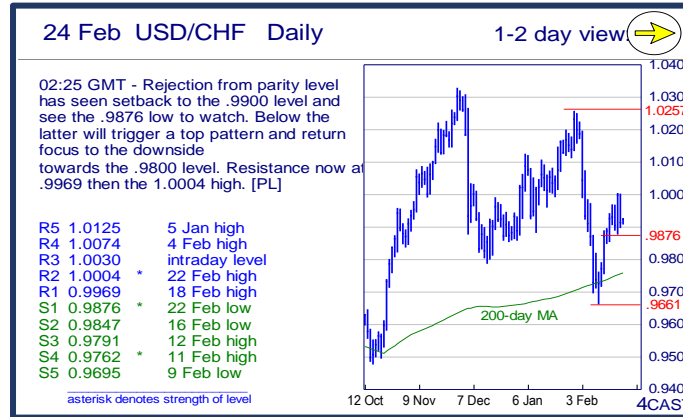
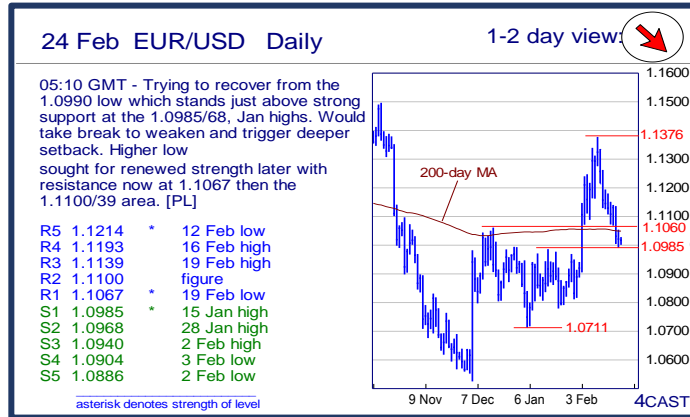


	Trends	Res 4	Res 3	Res 2	Res 1	Spot	Sup 1	Sup 2	Sup 3	Sup 4	MA20	MA50	MA200	RSI 9	
Scandies	EUR/SEK	↘	9.4797	9.4312	9.4088	9.3830	9.3501	9.3250	9.2844	9.2514	9.2304	9.4056	9.3168	9.3503	40
	EUR/NOK	↘	9.6475	9.6000	9.5660	9.5100	9.4840	9.4430	9.4210	9.3780	9.3280	9.5487	9.5670	9.2284	40
	USD/SEK	→	8.6180	8.5825	8.5342	8.5203	8.4875	8.4422	8.4242	8.4086	8.3395	8.4673	8.4893	8.4636	53
	USD/NOK	→	8.7565	8.7460	8.6570	8.6340	8.6075	8.5335	8.5000	8.4465	8.4310	8.5942	8.7160	8.3531	50
	EUR/DKK	↘	7.47~	7.4685	7.4665	7.4662	7.4623	7.4608	7.4570	7.4568	7.4545	7.4635	7.4629	7.4615	42
	NOK/SEK	→	0.9985	0.9960	0.9920	0.9899	0.9849	0.9810	0.9734	0.9613	0.9600	0.9835	0.9725	1.0129	53
Majors	EUR/USD	↘	1.1193	1.1139	1.1100	1.1067	1.1014	1.0985	1.0968	1.0940	1.0904	1.1105	1.0972	1.1047	40
	USD/JPY	↓	113.60	113.38	112.80	112.31	111.72	111.67	110.99	110.65	110.09	115.37	117.61	121.03	27
	EUR/GBP	↑	.8000	.7955	.7927	.7898	0.7883	.7776	.7708	.7696	.7666	0.7726	0.7570	0.7282	70
	GBP/USD	↓	1.4235	1.4156	1.4080	1.4028	1.3967	1.3958	1.3844	1.3800	1.3700	1.4371	1.4494	1.5175	26
	USD/CHF	→	1.0074	1.0030	1.0004	0.9969	0.9931	0.9876	0.9847	0.9791	0.9762	0.9937	0.9975	0.9754	51
	EUR/JPY	↓	126.10	125.00	124.24	123.78	123.07	123.07	121.95	121.00	120.00	128.11	129.01	133.69	15
	EUR/CHF	↘	1.1061	1.1028	1.1000	1.0950	1.0936	1.0908	1.0870	1.0827	1.0778	1.1037	1.0947	1.0774	35
	AUD/USD	→	.7328	.7305	.7271	.7259	0.7178	.7153	.7100	.7069	.7046	0.7126	0.7104	0.7268	57
	USD/CAD	→	1.4015	1.4000	1.3910	1.3846	1.3808	1.3649	1.3640	1.3625	1.3620	1.3854	1.4003	1.3254	46
	NZD/USD	→	.6752	.6739	.6726	.6680	0.6620	.6600	.6565	.6545	.6509	0.6619	0.6629	0.6653	49
	EUR/CAD	↘	1.5975	1.5910	1.5530	1.5390	1.5210	1.4955	1.4800	1.4675	1.4500	1.5389	1.5363	1.4636	41
GBP/JPY	↓	159.14	158.88	158.47	157.26	156.0900	156.00	155.29	154.73	154.15	165.8325	170.5282	183.7695	17	
EM	USD/CNH	→	6.5678	6.5578	6.5504	6.5384	6.5348	6.5256	6.5164	6.4988	6.4866	6.5552	6.5767	6.3955	44
	USD/ZAR	↘	16.650	16.440	16.270	15.870	15.2400	15.055	14.790	14.490	14.240	15.7551	15.8764	13.8878	28
	USD/BRL	↘	4.1230	4.0950	4.0730	4.0220	3.9559	3.9290	3.9030	3.8000	3.7700	3.9681	3.9927	3.6699	45
	USD/MXN	↘	19.440	19.000	18.620	18.394	18.210	18.038	18.000	17.952	17.465	18.475	18.027	16.755	42
	EUR/PLN	↘	4.5235	4.50~	4.4720	4.4175	4.3856	4.3695	4.35~	4.3285	4.2680	4.4046	4.3688	4.2481	46
	EUR/CZK	→	27.19~	27.140	27.131	27.087	27.036	26.960	26.949	26.914	25.710	27.021	27.017	27.085	56
	EUR/HUF	↘	316.35	313.00	311.85	308.65	307.64	306.70	306.48	304.40	301.90	309.99	312.56	311.91	37
	EUR/TRY	↘	3.3760	3.3545	3.3420	3.3145	3.2396	3.1980	3.1635	3.1380	3.1175	3.2670	3.2501	3.1712	40
	USD/PLN	→	4.1247	4.1000	4.0481	4.0000	3.9819	3.9401	3.8881	3.8590	3.8438	3.9674	3.9831	3.8480	55
USD/RUB	↘	85.95	82.25	80.63	78.56	76.47	73.87	72.32	71.70	70.20	77.33	75.93	65.50	47	
Other Markets	S&P 500 Futures	→	1953	1947	1942	1922	1912	1900	1860	1804	1800	1892	1939	2013	54
	DAX Futures	→	9923	9800	9620	9586	9424	9316	9000	8690	8350	9338	9827	10583	52
	US 10y Futures	↘	133-01+	132-00	131-21+	131-09	131.17	130-11+	130-06	130-00	129-08	130.53	128.44	126.80	63
	Bund Futures	↗	167.00	166.50	166.16	165.59	165.44	164.25	163.72	162.70	161.55	158.71	161.06	157.62	52
	WTI Oil Futures	→	34.80	34.21	34.00	33.84	31.15	30.66	30.00	28.74	25.00	30.48	33.59	47.35	56

Copyright and other intellectual property rights in the material in this document belong to 4CAST Limited and/or 4CAST Inc (4CAST). The material shall not, under any circumstances, be reproduced or distributed in whole or part without the prior written consent of 4CAST. The material in this document is based upon information which 4CAST considers to be reliable and the analysis and opinion in the material represents the view of 4CAST at the time of transmission (unless stated otherwise). Such analysis and opinion is subject to change without notice. The material is intended for use by parties knowledgeable and experienced in the financial sector and is only one source amongst others to be considered in carrying on their business or activity. ACCORDINGLY 4CAST MAKES NO REPRESENTATION OR WARRANTY EXPRESS OR IMPLIED STATUTORY OR OTHERWISE (INCLUDING BUT NOT LIMITED TO) THE ACCURACY OF THE MATERIAL IN THIS DOCUMENT OR THE FITNESS FOR PURPOSE AND ALL SUCH REPRESENTATIONS AND WARRANTIES ARE HEREBY EXPRESSLY EXCLUDED. 4CAST does not give or purport to give investment advice. Any action taken by users on the basis of material in this document is entirely at their own risk. Independent investment advice should be sought where appropriate. 4CAST website may link to or be linked to other Internet sites. 4CAST does not accept responsibility for the content of such other sites. 4CAST's terms and conditions of business apply to all fee-paying subscribers and trial users.


	Trends	Res 4	Res 3	Res 2	Res 1	Spot	Sup 1	Sup 2	Sup 3	Sup 4	MA20	MA 50	MA 200	RSI 9	
Scandies	EUR/SEK	↘	9.4797 18 Feb high	9.4312 12 Feb low	9.4088 22 Feb high	9.3830 23 Feb high	9.3501	9.3250 3 Feb low	9.2844 2 Feb low	9.2514 27 Jan low	9.2304 8 Jan low	9.4056	9.3168	9.3503	40
	EUR/NOK	↘	9.6475 17 Feb high	9.6000 figure	9.5660 19 Feb high	9.5100 23 Feb high	9.4840	9.4430 23 Feb low	9.4210 25 Jan low	9.3780 29 Jan low	9.3280 3 Dec high	9.5487	9.5670	9.2284	40
	USD/SEK	→	8.6180 29 Jan high	8.5825 3 Feb high	8.5342 17 Feb high	8.5203 18 Feb high	8.4875	8.4422 22 Feb low	8.4242 19 Feb low	8.4086 15 Feb low	8.3395 11 Feb low	8.4673	8.4893	8.4636	53
	USD/NOK	→	8.7565 15 Jan low	8.7460 2 Feb high	8.6570 15 Feb high	8.6340 23 Feb high	8.6075	8.5335 18 Feb low	8.5000 figure	8.4465 4 Feb low	8.4310 2 Nov low	8.5942	8.7160	8.3531	50
	EUR/DKK	↘	7.47~ early Apr lows	7.4685 May-15 high	7.4665 24-Dec high	7.4662 16-Feb YTD high	7.4623	7.4608 22-Feb low	7.4570 7-Jan low	7.4568 Dec-15 low	7.4545 Oct-15 low	7.4635	7.4629	7.4615	42
	NOK/SEK	→	0.9985 18 Feb high	0.9960 intraday level	0.9920 intraday level	0.9899 23 Feb high	0.9849	0.9810 Support line fr 4/	0.9734 11 Feb low	0.9613 21 Jan low	0.9600 figure	0.9835	0.9725	1.0129	53
Majors	EUR/USD	↘	1.1193 16 Feb high	1.1139 19 Feb high	1.1100 figure	1.1067 19 Feb low	1.1014	1.0985 15 Jan high	1.0968 28 Jan high	1.0940 2 Feb high	1.0904 3 Feb low	1.1105	1.0972	1.1047	40
	USD/JPY	↘	113.60 16 Feb low	113.38 17 Feb low	112.80 intraday level	112.31 19 Feb low	111.72	111.67 12 Feb low	110.99 11 Feb low	110.65 congestion	110.09 1 Oct 14 high	115.37	117.61	121.03	27
	EUR/GBP	↑	.8000 figure	.7955 17 Dec 14 high	.7927 18 Dec 14 high	.7898 11 Feb high	0.7883	.7776 23 Feb low	.7708 18 Feb low	.7696 16 Feb low	.7666 27 Jan high	0.7726	0.7570	0.7282	70
	GBP/USD	↘	1.4235 17 Feb low	1.4156 23 Feb high	1.4080 21 Jan low, break	1.4028 intraday level	1.3967	1.3958 2 Mar 2009 low	1.3844 18 Mar 2009 low	1.3800 figure	1.3700 12 Mar 2009 low	1.4371	1.4494	1.5175	26
	USD/CHF	→	1.0074 4 Feb high	1.0030 intraday level	1.0004 22 Feb high	0.9969 18 Feb high	0.9931	0.9876 22 Feb low	0.9847 16 Feb low	0.9791 12 Feb high	0.9762 11 Feb high	0.9937	0.9975	0.9754	51
	EUR/JPY	↘	126.10 20 Feb low	125.00 figure	124.24 intraday level	123.78 intraday level	123.07	123.07 23 Feb low	121.95 50%2012/2014 ur	121.00 projection	120.00 figure	128.11	129.01	133.69	15
	EUR/CHF	↘	1.1061 17 Feb high	1.1028 23 Feb high	1.1000 figure	1.0950 11 Feb low	1.0936	1.0908 20 Jan low	1.0870 13 Jan low	1.0827 6 Jan low	1.0778 30 Dec low	1.1037	1.0947	1.0774	35
	AUD/USD	→	.7328 31 Dec high	.7305 4 Jan YTD high	.7271 200-day MA	.7259 23 Feb high	0.7178	.7153 11 Feb high	.7100 figure	.7069 19 Feb low	.7046 22 Jan high	0.7126	0.7104	0.7268	57
	USD/CAD	→	1.4015 11 Feb high	1.4000 50-day MA	1.3910 16 Feb high	1.3846 19 Feb high	1.3808	1.3649 18 Feb low	1.3640 break level	1.3625 early-Dec break	1.3620 100-day MA	1.3854	1.4003	1.3254	46
	NZD/USD	→	.6752 5 Feb high	.6739 12 Feb high	.6726 22 Feb high	.6680 intraday level	0.6620	.6600 figure	.6565 19 Feb low	.6545 16 Feb low	.6509 3 Feb low	0.6619	0.6629	0.6653	49
	EUR/CAD	↘	1.5975 18-Jan high	1.5910 11-Feb high	1.5530 17-Feb high	1.5390 19-Feb high	1.5210	1.4955 5-Jan low	1.4800 figure	1.4675 7-Dec high	1.4500 7-Dec low	1.5389	1.5363	1.4636	41
GBP/JPY	↘	159.14 intraday level	158.88 intraday level	158.47 intraday level	157.26 intraday level	156.09	156.00 figure	155.29 10 Oct 2013 low	154.73 9 Oct 2013 low	154.15 6 Sep 2013 low	165.83	170.53	183.77	17	
EM	USD/CNH	→	6.5678 10 Feb high	6.5578 5 Feb low	6.5504 11 Feb high	6.5384 17 Feb high	6.5348	6.5256 23 Feb low	6.5164 18 Feb low	6.4988 16 Feb low	6.4866 15 Feb low	6.5552	6.5767	6.3955	44
	USD/ZAR	↘	16.650 26-Jan high	16.440 3-Feb high	16.270 9-Feb high	15.870 17-Feb high	15.240	15.055 28-Dec low	14.790 16-Dec low	14.490 30-Nov high	14.240 3-Dec low	15.755	15.876	13.888	28
	USD/BRL	↘	4.1230 28 Jan high	4.0950 29 Jan high	4.0730 07 Jan high	4.0220 22 Feb high	3.9559	3.9290 22 Feb low	3.9030 100-day MA	3.8000 break level	3.7700 projection	3.9681	3.9927	3.6699	45
	USD/MXN	↘	19.440 11 Feb high	19.000 figure	18.620 10 Feb low	18.394 18 Feb high	18.210	18.038 intraday low	18.000 50-day MA	17.952 17 Feb low	17.465 break level	18.475	18.027	16.755	42
	EUR/PLN	↘	4.5235 Jan 2012 high	4.50~ fr mid-Jan highs	4.4720 9-Feb high	4.4175 16-Feb/ last week	4.3856	4.3695 20 Feb high	4.35~ early Jan high voln	4.3285 13-Jan low	4.2680 4-Jan low	4.4046	4.3688	4.2481	46
	EUR/CZK	→	27.19~ 1-Oct high	27.140 Oct high	27.131 11-Feb YTD high	27.087 5-Feb high	27.036	26.960 Feb low	26.949 Dec-15/ last year l	26.914 8-Nov-13 low	25.710 7-Nov-13 low	27.021	27.017	27.085	56
	EUR/HUF	↘	316.35 20-Jan high	313.00 9 & 11-Feb highs	311.85 17-Feb high	308.65 15-Feb low	307.64	306.70 start Aug-15 lows	306.48 Mon low	304.40 19-May-15 low	301.90 8-May low	309.99	312.56	311.91	37
	EUR/TRY	↘	3.3760 14-Oct high	3.3545 20-Jan high	3.3420 11-Feb high	3.3145 19-Feb high	3.2396	3.1980 1-Feb low	3.1635 4-Jan low	3.1380 18-Dec low	3.1175 27-Nov high	3.2670	3.2501	3.1712	40
	USD/PLN	→	4.1247 27 Jan high	4.1000 break level	4.0481 03 Feb high	4.0000 figure	3.9819	3.9401 100-day MA	3.8881 11 Feb low	3.8590 28 Dec low	3.8438 200-day MA	3.9674	3.9831	3.8480	55
USD/RUB	↘	85.95 21 Jan YTD high	82.25 26 Jan high	80.63 11 Feb high	78.56 22 Feb high	76.47	73.87 23 Feb low	72.32 05 Jan low	71.70 20 Feb tops	70.20 100-day MA	77.33	75.93	65.50	47	
Other Markets	S&P 500 Futures	→	1953 50%from Nov '15	1947 13 Jan high	1942 50-day MA	1922 19 Feb high	1912	1900 figure	1860 12 Feb high	1804 20 Jan low	1800 figure	1892	1939	2013	54
	DAX Futures	→	9923 27 Jan high	9800 break level	9620 04 Feb high	9586 22 Feb high	9424	9316 19 Feb low	9000 gap break	8690 11 Feb low	8350 early-Oct '14 low	9338	9827	10583	52
	US 10y Futures	↘	133-01+ 11 Feb high	132-00 12 Feb high	131-21+ 11 Feb low	131-09 19 Feb high	131.17	130-11+ intraday low	130-06 17 Feb low	130-00 figure	129-08 20 Jan high	130.53	128.44	126.80	63
	Bund Futures	↗	167.00 figure	166.50 projection	166.16 11-Feb high	165.59 11-Feb close	165.44	164.25 18-Feb low	163.72 08-Feb low	162.70 29-Jan low, gap	161.55 26-Jan low	158.71	161.06	157.62	52
	WTI Oil Futures	→	34.80 50-day MA	34.21 18 Feb high	34.00 18 Feb high	33.84 22 Feb high	31.15	30.66 16 Feb low	30.00 figure	28.74 11 Feb low	25.00 psychological lev	30.48	33.59	47.35	56



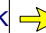
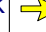


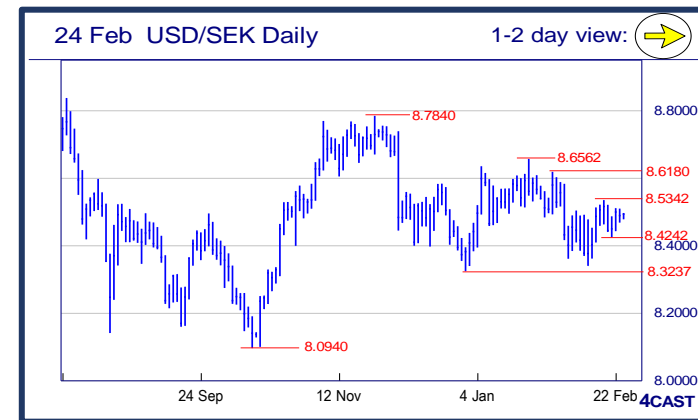
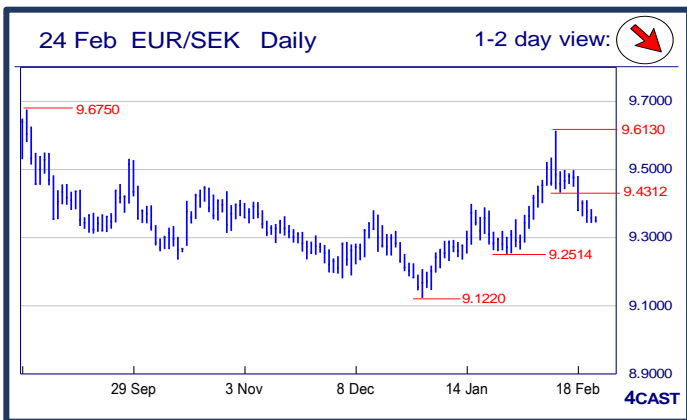
Strong uptrend Weak uptrend or higher in range Sideways or in range Weak downtrend or lower in range Strong downtrend








NOK, SEK opening updates



	1 day view	Resistance	Support	4cast
EUR/NOK		9.6475	9.4430	Steadied at 9.4430 low but the downside still not firm and see risk for setback to 9.4000 level then 9.3780 low. Failure to hold the latter will trigger a 2-mth top pattern and see deeper pullback. Resistance now at 9.5100 and 9.5660. [P..I]
		9.6000	9.4210	
		9.5660	9.3780	
		9.5100	9.3280	
EUR/SEK		9.4797	9.3250	Pressure still on the downside, weighed down by the negative stance seen on daily tools and with breach of 9.3425 support last session, further pullback to target strong support at 9.2514. Only lift above 9.4088 hurdle to reverse current decline. [W..T]
		9.4312	9.2844	
		9.4088	9.2514	
		9.3830	9.2304	
USD/NOK		8.7565	8.5335	Trying to recover though the upside still limited above the 8.6000 level. Would need to break the 8.6570 resistance to trigger stronger recovery from the 8.4465 low. Support is at 8.5335 where break will expose 8.5000, 8.4465 lows. [P..I]
		8.7460	8.5000	
		8.6570	8.4465	
		8.6340	8.4310	
USD/SEK		8.6180	8.4422	Inside-range set last session exposing room for intraday consolidation and lift above higher hurdle at 8.5342 will open upside towards 8.6180. Strong support seen at 8.4242 and break will see 8.3395 strong support targeted. [W..T]
		8.5825	8.4242	
		8.5342	8.4086	
		8.5203	8.3395	



 Strong uptrend
  Weak uptrend or higher in range
  Sideways or in range
  Weak downtrend or lower in range
  Strong downtrend