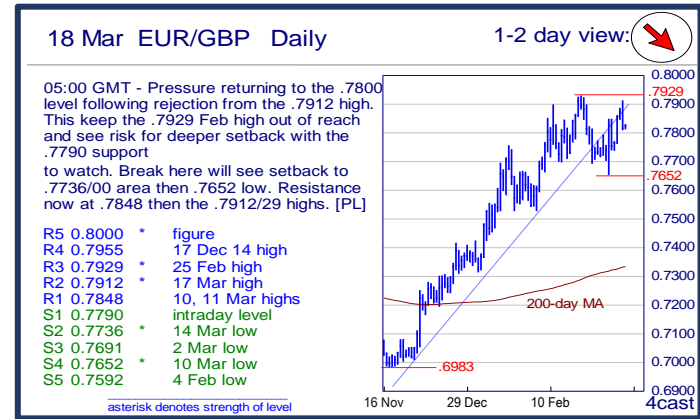
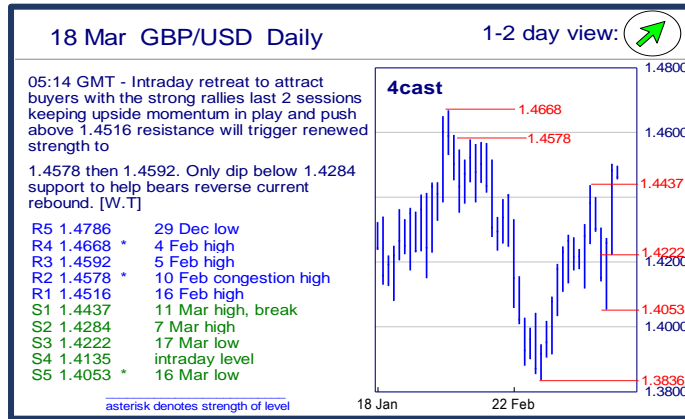
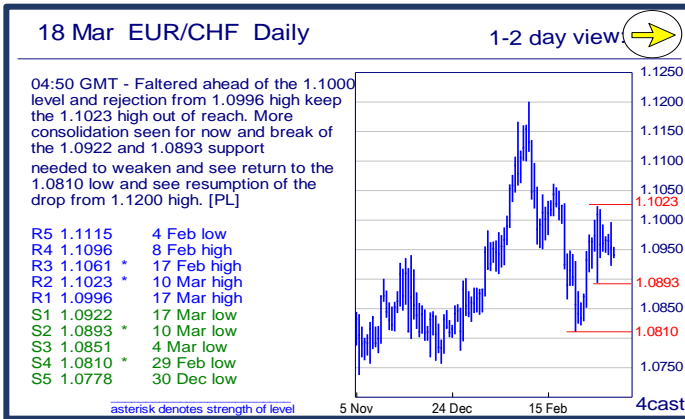
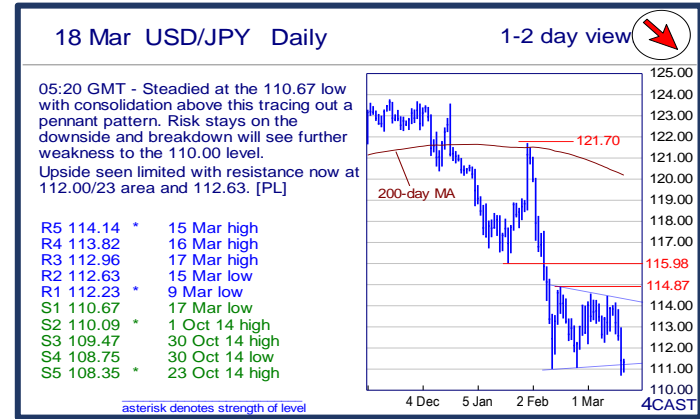
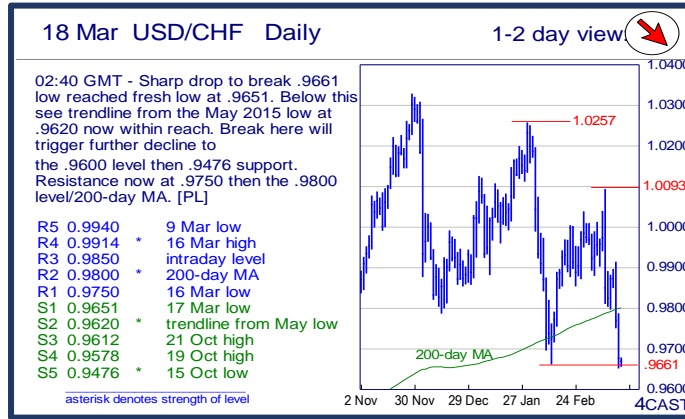
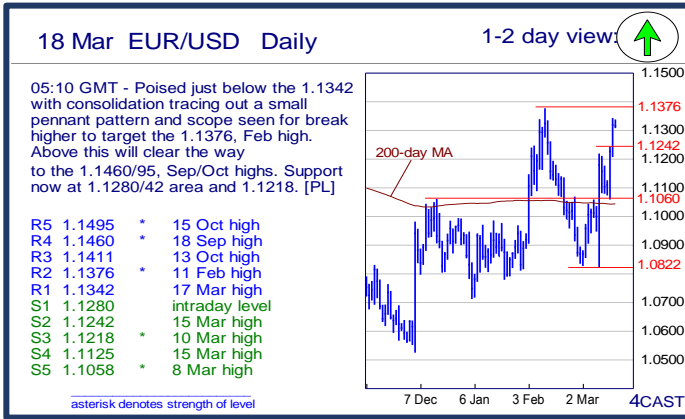


	Trends	Res 4	Res 3	Res 2	Res 1	Spot	Sup 1	Sup 2	Sup 3	Sup 4	MA20	MA50	MA200	RSI 9	
Scandies	EUR/SEK	→	9.3878	9.3511	9.3143	9.3066	9.2542	9.2060	9.1454	9.1220	9.1000	9.3170	9.3458	9.3507	40
	EUR/NOK	→	9.6200	9.5710	9.5280	9.4815	9.4079	9.3730	9.3170	9.2765	9.2370	9.4407	9.5162	9.2960	46
	USD/SEK	↓	8.3395	8.3030	8.2444	8.2246	8.1791	8.1347	8.0940	8.0314	8.0000	8.4334	8.4743	8.4681	17
	USD/NOK	↓	8.5000	8.4415	8.4210	8.3965	8.3148	8.3030	8.2640	8.2000	8.1735	8.5412	8.6267	8.4178	31
	EUR/DKK	↘	7.4647	7.4635~	7.4588	7.4563	7.4531	7.4518	7.4515	7.4472	7.4460	7.4596	7.4619	7.4615	18
	NOK/SEK	↗	1.0010	0.9962	0.9928	0.9859	0.9830	0.9804	0.9750	0.9707	0.9670	0.9857	0.9807	1.0053	49
Majors	EUR/USD	↑	1.1460	1.1411	1.1376	1.1342	1.1315	1.1280	1.1242	1.1218	1.1125	1.1049	1.1027	1.1042	75
	USD/JPY	↘	113.82	112.96	112.63	112.23	111.38	110.67	110.09	109.47	108.75	113.01	115.25	120.15	31
	EUR/GBP	↘	.7955	.7929	.7912	.7848	0.7820	.7790	.7736	.7691	.7652	0.7799	0.7715	0.7331	55
	GBP/USD	↗	1.4668	1.4592	1.4578	1.4516	1.4461	1.4437	1.4284	1.4222	1.4135	1.4163	1.4290	1.5072	63
	USD/CHF	↘	0.9914	0.9850	0.9800	0.9750	0.9666	0.9651	0.9620	0.9612	0.9578	0.9891	0.9953	0.9797	23
	EUR/JPY	→	129.05	128.17	127.29	126.62	126.02	125.10	124.89	123.65	123.06	124.87	127.07	132.65	53
	EUR/CHF	→	1.1096	1.1061	1.1023	1.0996	1.0936	1.0922	1.0893	1.0851	1.0810	1.0929	1.0977	1.0817	46
	AUD/USD	↑	.7772	.7739	.7679	.7657	0.7639	.7592	.7528	.7485	.7445	0.7379	0.7179	0.7241	72
	USD/CAD	↘	1.3816	1.3673	1.3323	1.3120	1.2986	1.2945	1.2900	1.2835	1.2500	1.3373	1.3789	1.3332	29
	NZD/USD	↑	.6924	.6897	.6883	.6859	0.6834	.6800	.6780	.6721	.6650	0.6701	0.6613	0.6614	62
	EUR/CAD	→	1.5265	1.5145	1.5015	1.4875	1.4697	1.4525	1.4380	1.4225	1.4035	1.4776	1.5205	1.4717	44
GBP/JPY	→	164.10	163.41	162.95	161.94	161.1100	159.90	159.02	158.74	158.56	160.0720	164.7236	181.2421	49	
EM	USD/CNH	↓	6.5147	6.4988	6.4866	6.4720	6.4615	6.4423	6.4161	6.4020	6.4023	6.5124	6.5503	6.4213	31
	USD/ZAR	↘	16.440	16.310	16.240	15.750	15.2122	15.025	14.790	14.490	14.240	15.4814	15.9007	14.1693	43
	USD/BRL	↘	3.9380	3.8930	3.8380	3.7200	3.6229	3.6000	3.5710	3.5000	3.3200	3.8015	3.9276	3.7252	34
	USD/MXN	↘	18.394	18.212	17.952	17.555	17.357	17.250	17.158	17.000	16.936	17.861	18.195	16.958	31
	EUR/PLN	↘	4.3770	4.3700	4.3455	4.3120	4.2743	4.2690	4.2600	4.2535	4.2240	4.3236	4.3821	4.2634	32
	EUR/CZK	→	27.19~	27.140	27.131	27.08~	27.028	27.00-3	26.960	26.949	26.914	27.031	27.021	27.056	50
	EUR/HUF	↗	316.35	314.65	312.95~	311.50~	310.00	308.45	307.30	306.72	306.48	309.64	311.12	311.90	50
	EUR/TRY	→	3.3420	3.3145	3.2830	3.2705	3.2201	3.1640	3.1380	3.1175	3.0775	3.2127	3.2526	3.1914	51
	USD/PLN	↓	3.9790	3.9641	3.8925	3.8605	3.7772	3.7667	3.7500	3.7380	3.6787	3.9147	3.9758	3.8636	18
USD/RUB	↘	76.40	75.82	71.80	71.39	68.10	67.93	67.00	66.70	64.08	72.42	75.76	67.07	28	
Other Markets	S&P 500 Futures	→	2105	2068	2036	2033	2031	2011	1998	1939	1877	1984	1927	2005	77
	DAX Futures	↗	11000	10693	10165	10120	9872	9395	9000	8690	8350	9659	9561	10424	57
	US 10y Futures	↗	131-14	130-27	129-26	129-17	129.12	129-04	128-16	128-01+	128-00	129.89	129.63	127.14	51
	Bund Futures	→	166.00	165.00	164.00	163.40	162.32	160.81	160.40	160.02	159.21	162.77	162.69	158.02	37
	WTI Oil Futures	↗	43.78	42.28	41.93	41.01	40.26	38.47	36.28	33.76	30.56	35.90	33.82	45.54	69

	Trends	Res 4	Res 3	Res 2	Res 1	Spot	Sup 1	Sup 2	Sup 3	Sup 4	MA20	MA 50	MA 200	RSI 9	
Scandies	EUR/SEK	→	9.3878 10 Mar high	9.3511 200-day MA	9.3143 14 Mar high	9.3066 17 Mar high	9.2542	9.2060 16/17 Mar low	9.1454 4 Jan low	9.1220 30 Dec low	9.1000 figure	9.3170	9.3458	9.3507	40
	EUR/NOK	→	9.6200 24 Feb high	9.5710 10 Mar high	9.5280 16 Mar high	9.4815 16 Mar low	9.4079	9.3730 17 Mar low	9.3170 7 Mar low	9.2765 10 Mar low	9.2370 4 Dec low	9.4407	9.5162	9.2960	46
	USD/SEK	↓	8.3395 11 Feb low	8.3030 15 Mar low	8.2444 18 Mar high	8.2246 intraday level	8.1791	8.1347 18 Mar low	8.0940 14 Oct low	8.0314 18 Jun low	8.0000 figure	8.4334	8.4743	8.4681	17
	USD/NOK	↓	8.5000 figure	8.4415 16 Mar low	8.4210 200-day MA	8.3965 11 Mar low	8.3148	8.3030 17 Mar low	8.2640 23 Oct low	8.2000 figure	8.1735 22 Oct low	8.5412	8.6267	8.4178	31
	EUR/DKK	↘	7.4647 24-Feb high	7.4635~ 7-9-Mar highs	7.4588 Wed high	7.4563 3 Mar low	7.4531	7.4518 Jul-'15 low	7.4515 May-'15 low	7.4472 mid-Mar-'15 low	7.4460 Mar-'15 low	7.4596	7.4619	7.4615	18
	NOK/SEK	↗	1.0010 7 Mar high	0.9962 10 Mar high	0.9928 11 Mar high	0.9859 15 Mar high	0.9830	0.9804 intraday level	0.9750 intraday level	0.9707 17 Mar low	0.9670 16 Mar low	0.9857	0.9807	1.0053	49
Majors	EUR/USD	↑	1.1460 18 Sep high	1.1411 13 Oct high	1.1376 11 Feb high	1.1342 17 Mar high	1.1315	1.1280 intraday level	1.1242 15 Mar high	1.1218 10 Mar high	1.1125 15 Mar high	1.1049	1.1027	1.1042	75
	USD/JPY	↘	113.82 16 Mar high	112.96 17 Mar high	112.63 15 Mar low	112.23 9 Mar low	111.38	110.67 17 Mar low	110.09 1 Oct 14 high	109.47 30 Oct 14 high	108.75 30 Oct 14 low	113.01	115.25	120.15	31
	EUR/GBP	↘	.7955 17 Dec 14 high	.7929 25 Feb high	.7912 17 Mar high	.7848 10, 11 Mar highs	0.7820	.7790 intraday level	.7736 14 Mar low	.7691 2 Mar low	.7652 10 Mar low	0.7799	0.7715	0.7331	55
	GBP/USD	↗	1.4668 4 Feb high	1.4592 5 Feb high	1.4578 10 Feb congestion	1.4516 16 Feb high	1.4461	1.4437 11 Mar high, break	1.4284 7 Mar high	1.4222 17 Mar low	1.4135 intraday level	1.4163	1.4290	1.5072	63
	USD/CHF	↘	0.9914 16 Mar high	0.9850 intraday level	0.9800 200-day MA	0.9750 16 Mar low	0.9666	0.9651 17 Mar low	0.9620 trendline from Ma	0.9612 21 Oct high	0.9578 19 Oct high	0.9891	0.9953	0.9797	23
	EUR/JPY	→	129.05 50%Jan/Feb dow	128.17 16 Feb high	127.29 11 Mar high	126.62 17 Mar high	126.02	125.10 15 Mar low	124.89 9 Mar high	123.65 10 Mar low	123.06 9 Mar low	124.87	127.07	132.65	53
	EUR/CHF	→	1.1096 8 Feb high	1.1061 17 Feb high	1.1023 10 Mar high	1.0996 17 Mar high	1.0936	1.0922 17 Mar low	1.0893 10 Mar low	1.0851 4 Mar low	1.0810 29 Feb low	1.0929	1.0977	1.0817	46
	AUD/USD	↑	.7772 24 Jun high	.7739 1 Jul high	.7679 23 Jun low	.7657 17 Mar high	0.7639	.7592 14 Mar high	.7528 9 Mar high, conge	.7485 7 Mar high	.7445 15 Mar low	0.7379	0.7179	0.7241	72
	USD/CAD	↘	1.3816 50-day MA	1.3673 100-day MA	1.3323 200-day MA	1.3120 50-week MA	1.2986	1.2945 intraday low	1.2900 figure	1.2835 Mar '15 high	1.2500 break level	1.3373	1.3789	1.3332	29
	NZD/USD	↑	.6924 25 Jun high	.6897 15 Oct high	.6883 29 Dec high	.6859 17 Mar high	0.6834	.6800 figure	.6780 intraday level	.6721 17 Mar low	.6650 intraday level	0.6701	0.6613	0.6614	62
	EUR/CAD	→	1.5265 24-Feb high	1.5145 25-Feb high	1.5015 10-Mar high	1.4875 15-Mar high	1.4697	1.4525 1-Mar low	1.4380 10-Mar low	1.4225 1-Dec high	1.4035 3-Dec low	1.4776	1.5205	1.4717	44
	GBP/JPY	→	164.10 11/14 Mar highs	163.41 intraday level	162.95 15 Mar high	161.94 intraday level	161.11	159.90 intraday level	159.02 17 Mar low	158.74 2 Mar low	158.56 26 Feb high	160.07	164.72	181.24	49
EM	USD/CNH	↓	6.5147 100-day MA line	6.4988 17 Mar high	6.4866 15 Feb low	6.4720 11 Mar low	6.4615	6.4423 7 Dec low	6.4161 30 Nov low	6.4020 61.8%of 6.1863-6	6.4023 18 Nov low	6.5124	6.5503	6.4213	31
	USD/ZAR	↘	16.440 3-Feb high	16.310 26-Feb high	16.240 16-Mar high	15.750 Tod. intra high	15.212	15.025 10-Mar low	14.790 16-Dec low	14.490 30-Nov high	14.240 3-Dec low	15.481	15.901	14.169	43
	USD/BRL	↘	3.9380 50-day MA	3.8930 100-day MA	3.8380 29 Dec low	3.7200 200-day MA	3.6229	3.6000 50-week MA	3.5710 11 Mar low	3.5000 H&S target	3.3200 Mar '15 high	3.8015	3.9276	3.7252	34
	USD/MXN	↘	18.394 18 Feb high	18.212 50-day MA	17.952 17 Feb low	17.555 100-day MA	17.357	17.250 break level	17.158 29 Dec low	17.000 figure	16.936 200-day MA	17.861	18.195	16.958	31
	EUR/PLN	↘	4.3770 29-Feb high	4.3700 20 15 high, st-Feb	4.3455 10-Mar high	4.3120 2-Mar low, Thur a	4.2743	4.2690 Mon low	4.2600 1-Jan high/ gap lo	4.2535 1-Jan YTD low	4.2240 30-Dec-'15 low	4.3236	4.3821	4.2634	32
	EUR/CZK	→	27.19~ 1-Oct high	27.140 Oct high	27.131 11-Feb YTD high	27.08~ fr 26-Feb highs	27.028	27.00-3 Nov-Feb high vol	26.960 Feb low	26.949 Dec-'15/ last year l	26.914 8-Nov-'13 low	27.031	27.021	27.056	50
	EUR/HUF	↗	316.35 20-Jan high	314.65 28-Jan high	312.95~ 9 & 11-Feb highs	311.50~ fr mid-Feb highs	310.00	308.45 10-Mar low	307.30 4-Mar low	306.72 start Aug-'15 lows	306.48 22-Feb YTD low	309.64	311.12	311.90	50
	EUR/TRY	→	3.3420 11-Feb high	3.3145 19-Feb high	3.2830 22-Feb high	3.2705 29-Feb high	3.2201	3.1640 3-Mar low	3.1380 18-Dec low	3.1175 10-Mar low	3.0775 2-Dec high	3.2127	3.2526	3.1914	51
	USD/PLN	↓	3.9790 50-day MA	3.9641 100-day MA	3.8925 16 Mar high	3.8605 200-day MA	3.7772	3.7667 17 Mar low	3.7500 projection	3.7380 break level	3.6787 Oct '15 low	3.9147	3.9758	3.8636	18
USD/RUB	↘	76.40 end Feb highs	75.82 50-day MA	71.80 100-day MA	71.39 15 Mar high	68.10	67.93 17 Mar low	67.00 figure	66.70 200-day MA	64.08 50-week MA	72.42	75.76	67.07	28	
Other Markets	S&P 500 Futures	→	2105 May '15 high	2068 30 Dec high	2036 04 Jan high	2033 projection	2031	2011 50-week MA	1998 200-day MA	1939 13 Jan high	1877 24 Feb low	1984	1927	2005	77
	DAX Futures	↗	11000 figure	10693 gap break	10165 13 Jan high	10120 break level	9872	9395 10 Mar low	9000 gap break	8690 11 Feb low	8350 early-Oct '14 low	9659	9561	10424	57
	US 10y Futures	↗	131-14 24 Feb high	130-27 01 Mar high	129-26 17 Feb low	129-17 intraday high	129.12	129-04 50-day MA	128-16 break level	128-01+ 16 Mar low	128-00 figure	129.89	129.63	127.14	51
	Bund Futures	→	166.00 figure	165.00 ABC move	164.00 29-Feb high	163.40 10-Mar high	162.32	160.81 10-Mar low	160.40 1-Feb low	160.02 29-Jan low, gap	159.21 21-Jan high	162.77	162.69	158.02	37
	WTI Oil Futures	↗	43.78 16 Nov low	42.28 9 Dec high	41.93 Aug '15 low	41.01 15 Dec high	40.26	38.47 17 Mar low	36.28 28 Jan high	33.76 50-day MA	30.56 24 Feb low	35.90	33.82	45.54	69

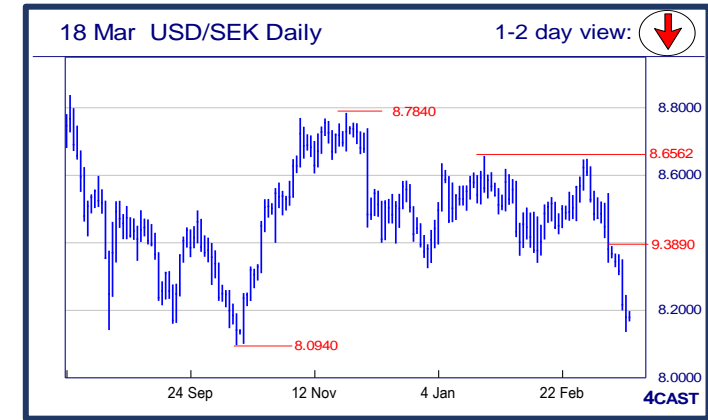
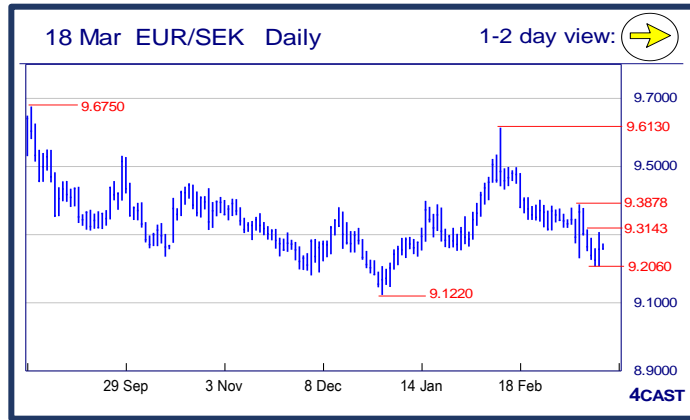


Strong uptrend Weak uptrend or higher in range Sideways or in range Weak downtrend or lower in range Strong downtrend



NOK, SEK opening updates

	1 day view	Resistance	Support	4cast
EUR/NOK		9.6200	9.3730	Rejection from the 9.5280 high to break the 9.4000 level see pressure returning to the downside to reach 9.3730 low. Below this will see risk for deeper setback to 9.3170 and 9.2765 lows. Resistance now at 9.4815 then 9.5280 high. [P.L]
		9.5710	9.3170	
		9.5280	9.2765	
EUR/SEK		9.4815	9.2370	Bears found the 9.2060 support a hard nut to crack last session and strong reaction from the latter towards closing is taking some pressure off the downside and now shifting trade back into consolidation. [W.T]
		9.3878	9.2060	
		9.3511	9.1454	
USD/NOK		9.3143	9.1220	Drop through the 200-day MA and 8.3965 low saw plunge to 8.3030 low to extend the broader decline from 8.9940, Jan high. Lower will see scope to 8.2640 then the 8.2000 level. The 8.3965 low and 200-day MA at 8.4210 now reverts to resistance. [P.L]
		9.3066	9.1000	
		8.5000	8.3030	
USD/SEK		8.4415	8.2640	Bears extended decline to 8.1347 low last session but oversold posture seen on daily technical tools is pausing decline with trade shifting into consolidation but intraday gain to the 8.2444 hurdle should attract fresh sellers. [W.T]
		8.4210	8.2000	
		8.3965	8.1735	
		8.3395	8.1347	
		8.3030	8.0940	
		8.2444	8.0314	
		8.2246	8.0000	



Strong uptrend
 Weak uptrend or higher in range
 Sideways or in range
 Weak downtrend or lower in range
 Strong downtrend