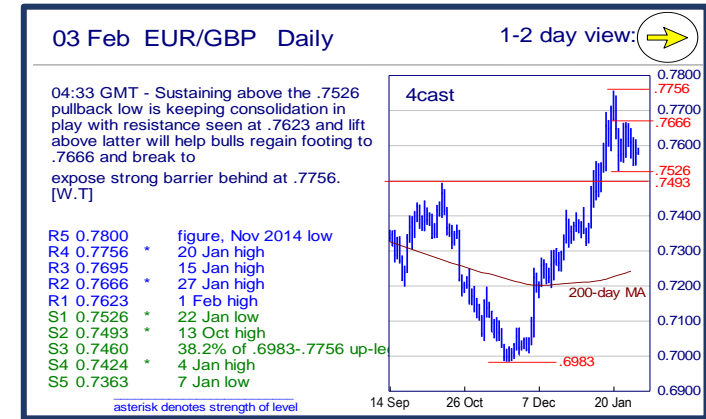
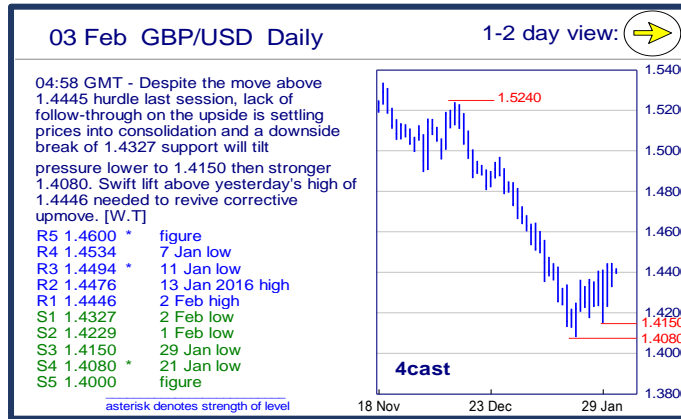
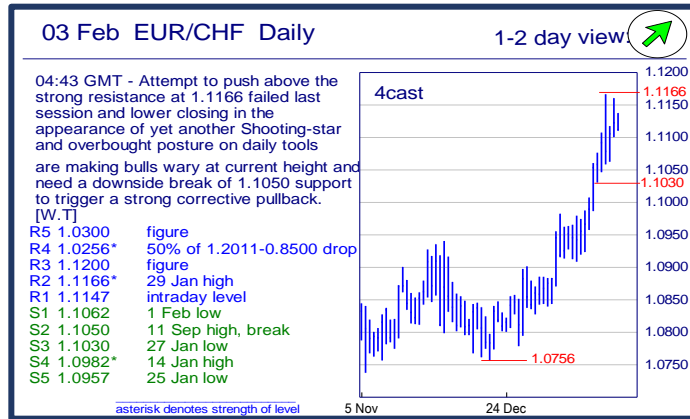
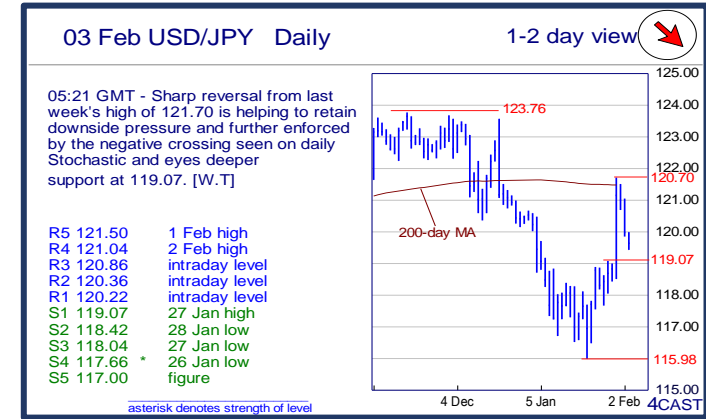
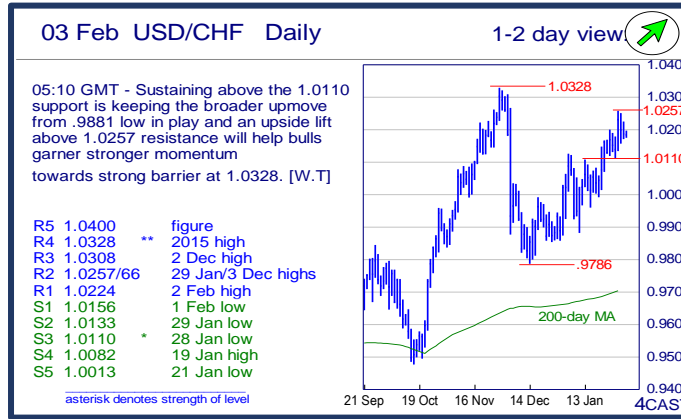
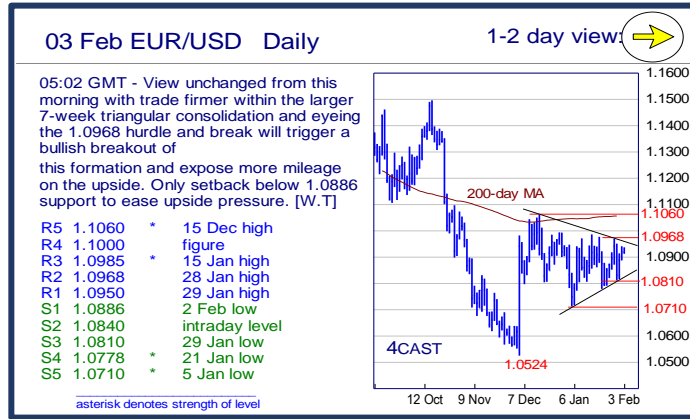


	Trends	Res 4	Res 3	Res 2	Res 1	Spot	Sup 1	Sup 2	Sup 3	Sup 4	MA20	MA50	MA200	RSI 9	
Scandies	EUR/SEK	↗	9.4353	9.4096	9.3982	9.3880	9.3626	9.3190	9.2844	9.2640	9.2514	9.3023	9.2674	9.3424	63
	EUR/NOK	↗	9.7000	9.6820	9.6000	9.5717	9.5361	9.4485	9.3780	9.3278	9.3000	9.5618	9.5061	9.1417	52
	USD/SEK	→	8.7383	8.7000	8.6562	8.6180	8.5751	8.5114	8.4920	8.4830	8.4576	8.5438	8.5267	8.4525	56
	USD/NOK	→	8.9585	8.9000	8.8095	8.7565	8.7345	8.6768	8.6374	8.6000	8.5500	8.7796	8.7436	8.2719	49
	EUR/DKK	→	7.47~	7.4685	7.4665	7.4655	7.4623	7.4595	7.4570	7.4568	7.4545	7.4628	7.4621	7.4615	45
	NOK/SEK	↘	0.9977	0.9934	0.9909	0.9846	0.9807	0.9766	0.9746	0.9729	0.9613	0.9715	0.9738	1.0221	57
Majors	EUR/USD	↗	1.1000	1.0985	1.0968	1.0950	1.0915	1.0886	1.0840	1.0810	1.0778	1.0884	1.0866	1.1052	55
	USD/JPY	↘	121.04	120.86	120.36	120.22	119.56	119.07	118.42	118.04	117.66	118.36	120.18	121.49	55
	EUR/GBP	→	.7756	.7695	.7666	.7623	0.7577	.7526	.7493	.7460	.7424	0.7586	0.7389	0.7244	52
	GBP/USD	→	1.4534	1.4494	1.4476	1.4446	1.4403	1.4327	1.4229	1.4150	1.4080	1.4346	1.4708	1.5257	52
	USD/CHF	↗	1.0328	1.0308	1.0257/66	1.0224	1.0171	1.0156	1.0133	1.0110	1.0082	1.0086	1.0023	0.9710	60
	EUR/JPY	→	132.47	132.32	132.03	131.30	130.52	130.22	129.60	128.95	128.76	128.82	130.58	134.26	60
	EUR/CHF	↗	1.0256	1.1200	1.1166	1.1147	1.1109	1.1062	1.1050	1.1030	1.0982	1.0981	1.0894	1.0730	81
	AUD/USD	→	.7172	.7140	.7089	.7074	0.7009	.6992	.6920	.6876	.6827	0.6986	0.7135	0.7328	46
	USD/CAD	→	1.4600	1.4539	1.4339	1.4109	1.4096	1.3940	1.3904	1.3890	1.3800	1.4230	1.3917	1.3125	48
	NZD/USD	→	.6709	.6678	.6590	.6560	0.6541	.6450	.6418	.6381	.6348	0.6495	0.6636	0.6713	53
	EUR/CAD	↘	1.5875	1.5675	1.5550	1.5440	1.5389	1.5110	1.4955	1.4800	1.4675	1.5489	1.5124	1.4499	51
GBP/JPY	→	176.17	175.02	174.52	173.34	172.2300	171.28	170.10	169.59	168.57	169.8255	176.8180	185.3969	54	
EM	USD/CNH	↗	6.7078	6.6920	6.6782	6.6557	6.6403	6.6319	6.6136	6.5936	6.5918	6.6105	6.5596	6.3709	64
	USD/ZAR	↘	17.830	17.100	16.970	16.650	16.3000	15.610	15.270	15.055	14.790	16.4393	15.6033	13.6103	52
	USD/BRL	↘	4.1720	4.1580	4.1000	4.0280	3.9856	3.9470	3.9410	3.9060	3.8000	4.0456	3.9510	3.5998	42
	USD/MXN	→	18.799	18.680	18.546	18.545	18.531	18.327	18.000	17.844	17.480	18.248	17.533	16.511	63
	EUR/PLN	↗	4.5975	4.5235	4.50~	4.4300	4.4040	4.3950~	4.3762	4.3700	4.3285	4.4224	4.3424	4.2223	46
	EUR/CZK	→	27.19~	27.140	27.105	27.080	27.014	26.960	26.949	26.914	25.710	27.013	27.015	27.112	51
	EUR/HUF	↘	319.10	318.00	316.35	314.65	311.94	310.00	309.35	308.62	306.70	313.71	313.83	311.57	45
	EUR/TRY	↘	3.4000	3.3760	3.3545	3.2985	3.2309	3.1635	3.1380	3.1175	3.0775	3.2721	3.2144	3.1487	44
	USD/PLN	↘	4.2000	4.1950	4.1558	4.1000	4.0383	4.0108	4.0000	3.9978	3.9555	4.0643	3.9972	3.8231	43
USD/RUB	→	89.15	85.95	82.25	80.00	79.80	76.86	75.10	74.55	72.79	77.94	73.28	63.49	60	
Other Markets	S&P 500 Futures	→	1983	1953	1947	1940	1892	1850	1824	1800	1782	1900	1990	2027	44
	DAX Futures	→	10119	10000	9923	9750	9563	9400	9217	9125	9000	9759	10375	10767	39
	US 10y Futures	↗	131.14	131-05+	131-00	130-15	130.08	129-08	128-00	127-10	127-02	128.48	127.14	126.51	77
	Bund Futures	↗	165.00	164.90	164.10	164.00	163.46	162.70	161.55	161.13	160.66	157.92	158.72	157.03	59
	WTI Oil Futures	→	36.48	35.00	34.82	32.65	29.65	29.25	27.56	26.65	26.19	31.69	36.86	49.35	37

	Trends	Res 4	Res 3	Res 2	Res 1	Spot	Sup 1	Sup 2	Sup 3	Sup 4	MA20	MA 50	MA 200	RSI 9	
Scandies	EUR/SEK	↗	9.4353 28 Oct high	9.4096 2 Nov high	9.3982 15 Jan high	9.3880 20 Jan high	9.3626	9.3190 26 Jan high	9.2844 2 Feb low	9.2640 1Feb low	9.2514 27 Jan low	9.3023	9.2674	9.3424	63
	EUR/NOK	↗	9.7000 figure	9.6820 4 Jan high	9.6000 figure	9.5717 22 Jan high	9.5361	9.4485 2 Feb low	9.3780 29 Jan low	9.3278 3 Dec high	9.3000 figure	9.5618	9.5061	9.1417	52
	USD/SEK	→	8.7383 3 Dec high	8.7000 figure	8.6562 21Jan high	8.6180 29 Jan high	8.5751	8.5114 1Feb low	8.4920 29 Jan low	8.4830 27 Jan low	8.4576 7 Jan low	8.5438	8.5267	8.4525	56
	USD/NOK	→	8.9585 21Jan high	8.9000 figure	8.8095 22 Jan high	8.7565 15 Jan low	8.7345	8.6768 2 Feb low	8.6374 1Feb low	8.6000 29 Jan low	8.5500 4 Dec high	8.7796	8.7436	8.2719	49
	EUR/DKK	→	7.47~ early Apr lows	7.4685 May-15 high	7.4665 24-Dec high	7.4655 20-1-Jan YTD high	7.4623	7.4595 22-Jan low	7.4570 7-Jan low	7.4568 Dec-15 low	7.4545 Oct-15 low	7.4628	7.4621	7.4615	45
	NOK/SEK	↘	0.9977 7 Dec high	0.9934 12 Nov low	0.9909 1Feb high	0.9846 2 Feb high	0.9807	0.9766 2 Feb low	0.9746 25 Jan low	0.9729 22 Jan low	0.9613 21 Jan low	0.9715	0.9738	1.0221	57
Majors	EUR/USD	↗	1.1000 figure	1.0985 15 Jan high	1.0968 28 Jan high	1.0950 29 Jan high	1.0915	1.0886 2 Feb low	1.0840 intraday level	1.0810 29 Jan low	1.0778 21 Jan low	1.0884	1.0866	1.1052	55
	USD/JPY	↘	121.04 2 Feb high	120.86 intraday level	120.36 intraday level	120.22 intraday level	119.56	119.07 27 Jan high	118.42 28 Jan low	118.04 27 Jan low	117.66 26 Jan low	118.36	120.18	121.49	55
	EUR/GBP	→	.7756 20 Jan high	.7695 15 Jan high	.7666 27 Jan high	.7623 1Feb high	0.7577	.7526 22 Jan low	.7493 13 Oct high	.7460 38.2% of .6983-7	.7424 4 Jan high	0.7586	0.7389	0.7244	52
	GBP/USD	→	1.4534 7 Jan low	1.4494 11 Jan low	1.4476 13 Jan 2016 high	1.4446 2 Feb high	1.4403	1.4327 2 Feb low	1.4229 1Feb low	1.4150 29 Jan low	1.4080 21 Jan low	1.4346	1.4708	1.5257	52
	USD/CHF	↗	1.0328 2015 high	1.0308 2 Dec high	0.257/66 29 Jan/3 Dec high	1.0224 2 Feb high	1.0171	1.0156 1Feb low	1.0133 29 Jan low	1.0110 28 Jan low	1.0082 19 Jan high	1.0086	1.0023	0.9710	60
	EUR/JPY	→	132.47 28 Dec high	132.32 29 Jan high	132.03 1Feb high	131.30 intraday level	130.52	130.22 intraday level	129.60 29 Jan low	128.95 28 Jan low	128.76 14 Jan high	128.82	130.58	134.26	60
	EUR/CHF	↗	1.0256 50% of 1.20 11-0.8	1.1200 figure	1.1166 29 Jan high	1.1147 intraday level	1.1109	1.1062 1Feb low	1.1050 11 Sep high, break	1.1030 27 Jan low	1.0982 14 Jan high	1.0981	1.0894	1.0730	81
	AUD/USD	→	.7172 6 Jan high	.7140 29 Jan high	.7089 intraday level	.7074 intraday level	0.7009	.6992 27 Jan low	.6920 26 Jan low	.6876 21 Jan low	.6827 15 Jan low	0.6986	0.7135	0.7328	46
	USD/CAD	→	1.4600 break level	1.4539 21 Jan high	1.4339 15 Jan low	1.4109 29 Jan high	1.4096	1.3940 intraday low	1.3904 01Feb low	1.3890 50-day MA	1.3800 figure	1.4230	1.3917	1.3125	48
	NZD/USD	→	.6709 6 Jan high	.6678 8 Jan high	.6590 13 Jan high	.6560 21 Jan congestion	0.6541	.6450 1Feb low	.6418 27 Jan low	.6381 15 Jan low	.6348 20 Jan low	0.6495	0.6636	0.6713	53
	EUR/CAD	↘	1.5875 21-Jan high	1.5675 19-Jan low	1.5550 24-Aug 15 high	1.5440 27-Jan high	1.5389	1.5110 1-Feb low	1.4955 5-Jan low	1.4800 figure	1.4675 7-Dec high	1.5489	1.5124	1.4499	51
	GBP/JPY	→	176.17 5 Jan high	175.02 1Feb high	174.52 intraday level	173.34 intraday level	172.23	171.28 intraday level	170.10 29 Jan low	169.59 intraday level	168.57 27 Jan low	169.83	176.82	185.40	54
EM	USD/CNH	↗	6.7078 11 Jan high	6.6920 8 Jan high	6.6782 61.8% of 6.7510-6	6.6557 50% of 6.7510-6.5	6.6403	6.6319 29 Jan high	6.6136 2 Feb low	6.5936 T-line fr 30/10 low	6.5918 29 Jan low	6.6105	6.5596	6.3709	64
	USD/ZAR	↘	17.830 YTD high	17.100 figure	16.970 18-Jan high	16.650 26-Jan high	16.300	15.610 6-Jan low	15.270 30-Dec low	15.055 28-Dec low	14.790 16-Dec low	16.439	15.603	13.610	52
	USD/BRL	↘	4.1720 21 Jan high	4.1580 22 Jan high	4.1000 break level	4.0280 27 Jan low	3.9856	3.9470 01Feb low	3.9410 50-day MA	3.9060 100-day MA	3.8000 break level	4.0456	3.9510	3.5998	42
	USD/MXN	→	18.799 21 Jan high	18.680 break level	18.546 27 Jan high	18.545 intraday high	18.531	18.327 15 Jan high	18.000 break level	17.844 15 Jan low	17.480 50-day MA	18.248	17.533	16.511	63
	EUR/PLN	↗	4.5975 Dec 2011 high	4.5235 Jan 2012 high	4.50~ fr mid-Jan highs	4.4300 19-Jan low	4.4040	4.3950~ Tues pm high voln	4.3762 12-Jan high	4.3700 2015 high	4.3285 13-Jan low	4.4224	4.3424	4.2223	46
	EUR/CZK	→	27.19~ 1-Oct high	27.140 Oct high	27.105 3-Dec high	27.080 21-Jan high	27.014	26.960 11-Dec low	26.949 Dec-15/ last year l	26.914 8-Nov-13 low	25.710 7-Nov-13 low	27.013	27.015	27.112	51
	EUR/HUF	↘	319.10 12-Jan high	318.00 Jul high, 11-Dec high	316.35 20-Jan high	314.65 last week high	311.94	310.00 Mon Tues am low	309.35 3-Dec low	308.62 20-Nov low	306.70 start Aug low	313.71	313.83	311.57	45
	EUR/TRY	↘	3.4000 figure	3.3760 14-Oct high	3.3545 20-Jan high	3.2985 26-Jan high	3.2309	3.1635 4-Jan low	3.1380 18-Dec low	3.1175 27-Nov high	3.0775 2-Dec high	3.2721	3.2144	3.1487	44
	USD/PLN	↘	4.2000 figure	4.1950 break level	4.1558 26 Jan high	4.1000 break level	4.0383	4.0108 02 Feb low	4.0000 figure	3.9978 50-day MA	3.9555 break level	4.0643	3.9972	3.8231	43
USD/RUB	→	89.15 eqs May-Aug '15'	85.95 21 Jan high	82.25 26 Jan high	80.00 Dec-14 high; break	79.80	76.86 02 Feb low	75.10 01Feb low	74.55 29 Dec low	72.79 50-day MA	77.94	73.28	63.49	60	
Other Markets	S&P 500 Futures	→	1983 break level	1953 50% from Nov '15	1947 13 Jan high	1940 01Feb high	1892	1850 break level	1824 24 Aug low	1800 figure	1782 200-week MA	1900	1990	2027	44
	DAX Futures	→	10119 Dec '15 low	10000 figure	9923 27 Jan high	9750 break level	9563	9400 break level	9217 Dec '14 low	9125 Nov '14 low	9000 figure	9759	10375	10767	39
	US 10y Futures	↗	131.14 6 Jun 13 high	131-05+ Jan '15 contin high	131-00 figure	130-15 projection	130.08	129-08 20 Jan high	128-00 break level	127-10 11Dec high	127-02 50-day MA	128.48	127.14	126.51	77
	Bund Futures	↗	165.00 figure	164.90 range MM	164.10 channel line	164.00 figure	163.46	162.70 29-Jan low	161.55 26-Jan low	161.13 25-Jan low	160.66 last year's high	157.92	158.72	157.03	59
	WTI Oil Futures	→	36.48 21Dec low	35.00 figure	34.82 figure	32.65 29 Jan low	29.65	29.25 26 Jan low	27.56 20 Jan low	26.65 Sep '03 contin low	26.19 20 Jan low	31.69	36.86	49.35	37

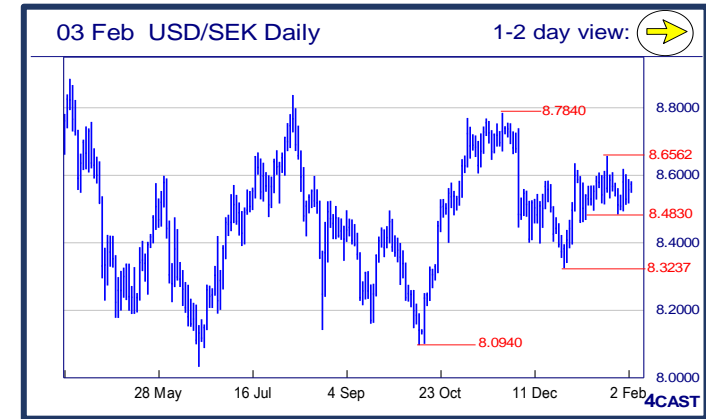


Strong uptrend    Weak uptrend or higher in range    Sideways or in range    Weak downtrend or lower in range    Strong downtrend



### NOK, SEK opening updates

	1 day view	Resistance	Support	4cast
EUR/NOK		9.7000	9.4485	Swing from the 9.3780 low getting stronger as seen by the move above 9.5322 hurdle as well as positive stance seen on daily tools and shifting focus higher to 9.5717 then 9.6000. Only dip below 9.4485 support to ease upside pressure. [W.T]
		9.6820	9.3780	
		9.6000	9.3278	
		9.5717	9.3000	
EUR/SEK		9.4353	9.3190	Breaking the 9.3530 hurdle last session is seen boosting the swing from 9.2514 low and currently supported by the positive stance seen on daily technical tools and eyeing higher resistances at 9.3880/3982. [W.T]
		9.4096	9.2844	
		9.3982	9.2640	
		9.3880	9.2514	
USD/NOK		8.9585	8.6768	Still in recovery mode with the breach of 8.7360 resistance slowly opening upside to 8.7565 ahead of 8.8095. Only setback below last session's low of 8.6768 to fade upside risk and reverse focus towards the strong support at 8.6000. [W.T]
		8.9000	8.6374	
		8.8095	8.6000	
		8.7565	8.5500	
USD/SEK		8.7383	8.5114	Nothing much has changed from the previous sessions with trade still trapped within consolidation, bounded by the initial 8.4830-8.6180 range and breakout will expose wider and stronger 8.4576-8.6562 band. [W.T]
		8.7000	8.4920	
		8.6562	8.4830	
		8.6180	8.4576	



Strong uptrend   
 Weak uptrend or higher in range   
 Sideways or in range   
 Weak downtrend or lower in range   
 Strong downtrend